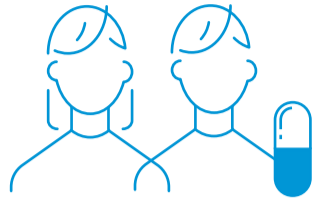


Stakeholder involvement

Patient contribution to EMA's work



Scientific Advice procedures	143
Scientific Advisory Groups	46
Committee consultations	353
Review of documents	169



In more than **90%** of cases, coordinators of scientific advice procedures considered patient involvement to be of added value.

PCWP/HCPWP

Membership of the working parties was **increased from 20 to 22 members**.

The Patients' and Consumers' and Healthcare Professionals' working parties held the following meetings in 2019:

May virtual meeting – focus on medicine shortages

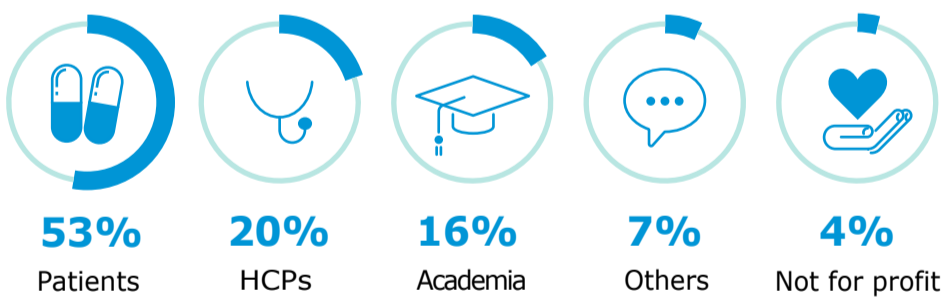
June virtual meeting – description of 3 year workplan

September co-chair elections for PCWP and HCPWP

November meeting with all eligible organisations highlighted new legislations and EMA in 2020

Queries

Queries received* in 2019 by affiliation:



Queries by topic:

Shingrix
Availability
Bexsero SSRI's
Adverse effects
Vaccines
Fluoroquinolones
Nitrosamines
Medical devices

6% from the Netherlands in 2019 compared with 3% in 2017

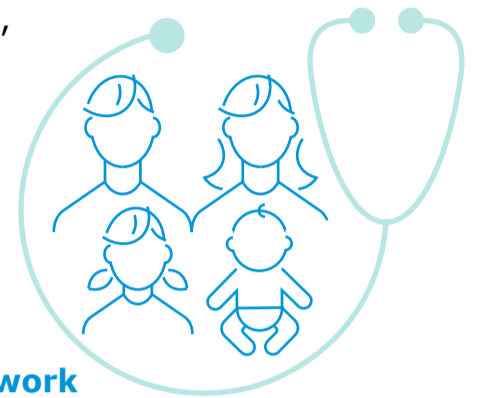
42% of queries responded in 1 week, 90% within 3 weeks

84% of respondents to our survey were satisfied to very satisfied with the service provided

* representing 21% of total queries to EMA

Strengthening engagement with family doctors

EMA and the European Union of General Practitioners (GPs) (UEMO), the European section of the World Organization of Family Doctors (WONCA) and the European Forum for Primary Care (EFPC), signed a joint statement committing to **strengthening interaction** between EMA and this important group of healthcare professionals.



HCP contribution to EMA's work



Scientific Advice/Advisory Groups	38
Committee consultations	68
Review of documents	48

Figures represent the cases where experts were identified via **healthcare professional** organisations, in addition to existing expertise within the European Medicines Regulatory Network.

Key events

'Regulatory Science to 2025': multi-stakeholder workshop

A multi-stakeholder workshop was held after a public consultation on the 'Regulatory Science to 2025' strategy. The strategy is a plan for advancing EMA's engagement with regulatory science over the next years and aims to build a more adaptive regulatory system that will encourage innovation in human and veterinary medicine.

Methotrexate containing medicines – stakeholder meeting

A meeting with patients representing rheumatoid arthritis, psoriasis and Crohn's disease groups, healthcare professional specialists and medication error experts was held to discuss new measures to prevent serious and potentially fatal errors with the dosing of methotrexate.

Three-year work plan for working parties

The PCWP/HCPWP work plan from 2019 to 2022 was published and represents a vision for the working parties for three years in a single document, with annual revisions, as needed. The work plan aligns with EMA strategic objectives and describes shared areas of work as well as PCWP and HCPWP specific areas.

Electronic product information (ePI) for EU medicines: key principles adopted

Product information for patients and prescribers accompanies every medicine. An initiative to develop an electronic format of product information published key principles following extensive stakeholder consultation. The principles will guide future implementation.