

ANNEX I

SUMMARY OF PRODUCT CHARACTERISTICS

1. NAME OF THE MEDICINAL PRODUCT

Armisarte 25 mg/ml concentrate for solution for infusion

2. QUALITATIVE AND QUANTITATIVE COMPOSITION

Each ml of concentrate contains 25 mg pemetrexed (as pemetrexed diacid).

Each vial of 4 ml concentrate contains 100 mg pemetrexed (as pemetrexed diacid).

Each vial of 20 ml concentrate contains 500 mg pemetrexed (as pemetrexed diacid).

Each vial of 34 ml concentrate contains 850 mg pemetrexed (as pemetrexed diacid).

Each vial of 40 ml concentrate contains 1000 mg pemetrexed (as pemetrexed diacid).

For the full list of excipients see section 6.1.

3. PHARMACEUTICAL FORM

Concentrate for solution for infusion (sterile concentrate).

The concentrate is clear, colourless to slightly yellowish or yellow-greenish solution.

The pH is between 7.0 and 8.0.

4. CLINICAL PARTICULARS

4.1 Therapeutic indications

Malignant pleural mesothelioma

Pemetrexed in combination with cisplatin is indicated for the treatment of chemotherapy naïve patients with unresectable malignant pleural mesothelioma.

Non-small cell lung cancer

Pemetrexed in combination with cisplatin is indicated for the first line treatment of patients with locally advanced or metastatic non-small cell lung cancer other than predominantly squamous cell histology (see section 5.1).

Pemetrexed is indicated as monotherapy for the maintenance treatment of locally advanced or metastatic non-small cell lung cancer other than predominantly squamous cell histology in patients whose disease has not progressed immediately following platinum-based chemotherapy (see section 5.1).

Pemetrexed is indicated as monotherapy for the second line treatment of patients with locally advanced or metastatic non-small cell lung cancer other than predominantly squamous cell histology (see section 5.1).

4.2 Posology and method of administration

Posology

Pemetrexed must only be administered under the supervision of a physician qualified in the use of anti-cancer chemotherapy.

Pemetrexed in combination with cisplatin

The recommended dose of pemetrexed is 500 mg/m² of body surface area (BSA) administered as an intravenous infusion over 10 minutes on the first day of each 21-day cycle. The recommended dose of cisplatin is 75 mg/m² BSA infused over two hours approximately 30 minutes after completion of the pemetrexed infusion on the first day of each 21-day cycle. Patients must receive adequate anti-emetic treatment and appropriate hydration prior to and/or after receiving cisplatin (see also cisplatin Summary of Product Characteristics for specific dosing advice).

Pemetrexed as single agent

In patients treated for non-small cell lung cancer after prior chemotherapy, the recommended dose of pemetrexed is 500 mg/m² BSA administered as an intravenous infusion over 10 minutes on the first day of each 21-day cycle.

Pre-medication regimen

To reduce the incidence and severity of skin reactions, a corticosteroid should be given the day prior to, on the day of, and the day after pemetrexed administration. The corticosteroid should be equivalent to 4 mg of dexamethasone administered orally twice a day (see section 4.4).

To reduce toxicity, patients treated with pemetrexed must also receive vitamin supplementation (see section 4.4). Patients must take oral folic acid or a multivitamin containing folic acid (350 to 1000 micrograms) on a daily basis. At least five doses of folic acid must be taken during the seven days preceding the first dose of pemetrexed, and dosing must continue during the full course of therapy and for 21 days after the last dose of pemetrexed. Patients must also receive an intramuscular injection of vitamin B₁₂ (1000 micrograms) in the week preceding the first dose of pemetrexed and once every three cycles thereafter. Subsequent vitamin B₁₂ injections may be given on the same day as pemetrexed.

Monitoring

Patients receiving pemetrexed should be monitored before each dose with a complete blood count, including a differential white cell count (WCC) and platelet count. Prior to each chemotherapy administration blood chemistry tests should be collected to evaluate renal and hepatic function. Before the start of any cycle of chemotherapy, patients are required to have the following: absolute neutrophil count (ANC) should be ≥ 1500 cells/mm³ and platelets should be $\geq 100,000$ cells/mm³. Creatinine clearance should be ≥ 45 ml/min.

The total bilirubin should be ≤ 1.5 times upper limit of normal. Alkaline phosphatase (AP), aspartate aminotransferase (AST or SGOT) and alanine aminotransferase (ALT or SGPT) should be ≤ 3 times upper limit of normal. Alkaline phosphatase, AST and ALT ≤ 5 times upper limit of normal is acceptable if liver has tumour involvement.

Dose adjustments

Dose adjustments at the start of a subsequent cycle should be based on nadir haematologic counts or maximum non-haematologic toxicity from the preceding cycle of therapy. Treatment may be delayed to allow sufficient time for recovery. Upon recovery patients should be retreated using the guidelines in Tables 1, 2 and 3, which are applicable for pemetrexed used as a single agent or in combination with cisplatin.

Table 1 - Dose modification table for pemetrexed (as single agent or in combination) and cisplatin – Haematologic toxicities	
Nadir ANC < 500/mm ³ and nadir platelets ≥ 50,000 /mm ³	75% of previous dose (both pemetrexed and cisplatin)
Nadir platelets <50,000 /mm ³ regardless of nadir ANC	75% of previous dose (both pemetrexed and cisplatin)
Nadir platelets <50,000/mm ³ with bleeding ^a , regardless of nadir ANC	50% of previous dose (both pemetrexed and cisplatin)

^a These criteria meet the National Cancer Institute Common Toxicity Criteria (CTC v2.0; NCI 1998) definition of ≥CTC Grade 2 bleeding.

If patients develop non-haematologic toxicities ≥ Grade 3 (excluding neurotoxicity), pemetrexed should be withheld until resolution to less than or equal to the patient's pre-therapy value. Treatment should be resumed according to the guidelines in Table 2.

Table 2 - Dose modification table for pemetrexed (as single agent or in combination) and cisplatin– Non-haematologic toxicities^{a,b}		
	Dose of pemetrexed (mg/m²)	Dose for cisplatin (mg/m²)
Any Grade 3 or 4 toxicities except mucositis	75% of previous dose	75% of previous dose
Any diarrhoea requiring hospitalisation (irrespective of grade) or grade 3 or 4 diarrhoea.	75% of previous dose	75% of previous dose
Grade 3 or 4 mucositis	50% of previous dose	100% of previous dose

^a National Cancer Institute Common Toxicity Criteria (CTC v2.0; NCI 1998)

^b Excluding neurotoxicity

In the event of neurotoxicity, the recommended dose adjustment for pemetrexed and cisplatin is documented in Table 3. Patients should discontinue therapy if Grade 3 or 4 neurotoxicity is observed.

Table 3 - Dose modification table for pemetrexed (as single agent or in combination) and cisplatin – Neurotoxicity		
CTC^a Grade	Dose of pemetrexed (mg/m²)	Dose for cisplatin (mg/m²)
0 – 1	100% of previous dose	100% of previous dose
2	100% of previous dose	50% of previous dose

^a National Cancer Institute Common Toxicity Criteria (CTC v2.0; NCI 1998)

Treatment with pemetrexed should be discontinued if a patient experiences any haematologic or non-haematologic Grade 3 or 4 toxicity after 2 dose reductions or immediately if Grade 3 or 4 neurotoxicity is observed.

Special populations

Elderly

In clinical studies, there has been no indication that patients 65 years of age or older are at increased risk of adverse reactions compared to patients younger than 65 years old. No dose reductions other than those recommended for all patients are necessary.

Paediatric population

There is no relevant use of pemetrexed in the paediatric population in malignant pleural mesothelioma and non-small cell lung cancer.

Patients with renal impairment (standard cockcroft and gault formula or glomerular filtration rate measured Tc99m-DPTA serum clearance method)

Pemetrexed is primarily eliminated unchanged by renal excretion. In clinical studies, patients with creatinine clearance of ≥ 45 ml/min required no dose adjustments other than those recommended for all patients. There are insufficient data on the use of pemetrexed in patients with creatinine clearance below 45 ml/min; therefore the use of pemetrexed is not recommended (see section 4.4).

Patients with hepatic impairment

No relationships between AST (SGOT), ALT (SGPT), or total bilirubin and pemetrexed pharmacokinetics were identified. However patients with hepatic impairment such as bilirubin > 1.5 times the upper limit of normal and/or aminotransferase > 3.0 times the upper limit of normal (hepatic metastases absent) or > 5.0 times the upper limit of normal (hepatic metastases present) have not been specifically studied.

Method of administration

Armisarte is for intravenous use. It should be administered as an intravenous infusion over 10 minutes on the first day of each 21-day cycle.

For precautions to be taken before handling or administering pemetrexed and for instructions on dilution of Armisarte before administration, see section 6.6.

4.3 Contraindications

Hypersensitivity to the active substance or to any of the excipients listed in section 6.1.

Breast-feeding (see section 4.6).

Concomitant yellow fever vaccine (see section 4.5).

4.4 Special warnings and precautions for use

Pemetrexed can suppress bone marrow function as manifested by neutropenia, thrombocytopenia and anaemia (or pancytopenia) (see section 4.8). Myelosuppression is usually the dose-limiting toxicity. Patients should be monitored for myelosuppression during therapy and pemetrexed should not be given to patients until absolute neutrophil count (ANC) returns to ≥ 1500 cells/mm³ and platelet count returns to $\geq 100,000$ cells/mm³. Dose reductions for subsequent cycles are based on nadir ANC, platelet count and maximum non-haematologic toxicity seen from the previous cycle (see section 4.2).

Less toxicity and reduction in Grade 3/4 haematologic and non-haematologic toxicities such as neutropenia, febrile neutropenia and infection with Grade 3/4 neutropenia were reported when pre-treatment with folic acid and vitamin B₁₂ was administered. Therefore, all patients treated with pemetrexed must be instructed to take folic acid and vitamin B₁₂ as a prophylactic measure to reduce treatment-related toxicity (see section 4.2).

Skin reactions have been reported in patients not pre-treated with a corticosteroid. Pre-treatment with dexamethasone (or equivalent) can reduce the incidence and severity of skin reactions (see section 4.2).

An insufficient number of patients has been studied with creatinine clearance of below 45 ml/min. Therefore, the use of pemetrexed in patients with creatinine clearance of < 45 ml/min is not recommended (see section 4.2).

Patients with mild to moderate renal insufficiency (creatinine clearance from 45 to 79 ml/min) should avoid taking non-steroidal anti-inflammatory medicinal products (NSAIDs) such as ibuprofen, and acetylsalicylic acid (> 1.3 g daily) for 2 days before, on the day of, and 2 days following pemetrexed administration (see section 4.5).

In patients with mild to moderate renal insufficiency eligible for pemetrexed therapy NSAIDs with long elimination half-lives should be interrupted for at least 5 days prior to, on the day of, and at least 2 days following pemetrexed administration (see section 4.5).

Serious renal events, including acute renal failure, have been reported with pemetrexed alone or in association with other chemotherapeutic agents. Many of the patients in whom these occurred had underlying risk factors for the development of renal events including dehydration or pre-existing hypertension or diabetes. Nephrogenic diabetes insipidus and renal tubular necrosis were also reported in post marketing setting with pemetrexed alone or with other chemotherapeutic agents. Most of these events resolved after pemetrexed withdrawal. Patients should be regularly monitored for acute tubular necrosis, decreased renal function and signs and symptoms of nephrogenic diabetes insipidus (e.g. hypernatraemia).

The effect of third space fluid, such as pleural effusion or ascites, on pemetrexed is not fully defined. A phase 2 study of pemetrexed in 31 solid tumour patients with stable third space fluid demonstrated no difference in pemetrexed dose normalized plasma concentrations or clearance compared to patients without third space fluid collections. Thus, drainage of third space fluid collection prior to pemetrexed treatment should be considered, but may not be necessary.

Due to the gastrointestinal toxicity of pemetrexed given in combination with cisplatin, severe dehydration has been observed. Therefore, patients should receive adequate antiemetic treatment and appropriate hydration prior to and/or after receiving treatment.

Serious cardiovascular events, including myocardial infarction and cerebrovascular events have been uncommonly reported during clinical studies with pemetrexed, usually when given in combination with another cytotoxic agent. Most of the patients in whom these events have been observed had pre-existing cardiovascular risk factors (see section 4.8).

Immunodepressed status is common in cancer patients. As a result, concomitant use of live attenuated vaccines is not recommended (see section 4.3 and 4.5).

Pemetrexed can have genetically damaging effects. Sexually mature males are advised not to father a child during the treatment and up to 3 months thereafter. Contraceptive measures or abstinence are recommended. Owing to the possibility of pemetrexed treatment causing irreversible infertility, men are advised to seek counselling on sperm storage before starting treatment.

Women of childbearing potential must use effective contraception during treatment with pemetrexed and for 6 months following completion of treatment (see section 4.6).

Cases of radiation pneumonitis have been reported in patients treated with radiation either prior, during or subsequent to their pemetrexed therapy. Particular attention should be paid to these patients and caution exercised with use of other radiosensitising agents.

Cases of radiation recall have been reported in patients who received radiotherapy weeks or years previously.

4.5 Interaction with other medicinal products and other forms of interaction

Pemetrexed is mainly eliminated unchanged renally by tubular secretion and to a lesser extent by glomerular filtration. Concomitant administration of nephrotoxic active substances (e.g. aminoglycoside, loop diuretics, platinum compounds, cyclosporin) could potentially result in delayed clearance of pemetrexed. This combination should be used with caution. If necessary, creatinine clearance should be closely monitored.

Concomitant administration of pemetrexed with OAT3 (organic anion transporter 3) inhibitors (e.g. probenecid, penicillin, proton pump inhibitors (PPIs)) results in delayed clearance of pemetrexed. Caution should be made when these substances are combined with pemetrexed.

In patients with normal renal function (creatinine clearance ≥ 80 ml/min), high doses of non-steroidal anti-inflammatory medicinal products (NSAIDs, such as ibuprofen > 1600 mg/day) and acetylsalicylic acid at higher dose (≥ 1.3 g daily) may decrease pemetrexed elimination and, consequently, increase the occurrence of pemetrexed adverse reactions. Therefore, caution should be made when administering higher doses of NSAIDs or acetylsalicylic acid, concurrently with pemetrexed to patients with normal function (creatinine clearance ≥ 80 ml/min).

In patients with mild to moderate renal insufficiency (creatinine clearance from 45 to 79 ml/min), the concomitant administration of pemetrexed with NSAIDs (e.g. ibuprofen) or acetylsalicylic acid at higher dose should be avoided for 2 days before, on the day of, and 2 days following pemetrexed administration (see section 4.4).

In the absence of data regarding potential interaction with NSAIDs having longer half-lives such as piroxicam or rofecoxib, the concomitant administration with pemetrexed in patients with mild to moderate renal insufficiency should be interrupted for at least 5 days prior to, on the day of, and at least 2 days following pemetrexed administration (see section 4.4). If concomitant administration of NSAIDs is necessary, patients should be monitored closely for toxicity, especially myelosuppression and gastrointestinal toxicity.

Pemetrexed undergoes limited hepatic metabolism. Results from *in vitro* studies with human liver microsomes indicated that pemetrexed would not be predicted to cause clinically significant inhibition of the metabolic clearance of active substances metabolised by CYP3A, CYP2D6, CYP2C9, and CYP1A2.

Interactions common to all cytotoxics

Due to the increased thrombotic risk in patients with cancer, the use of anticoagulation treatment is frequent. The high intra-individual variability of the coagulation status during diseases and the possibility of interaction between oral anticoagulants and anticancer chemotherapy require increased frequency of INR (International Normalised Ratio) monitoring, if it is decided to treat the patient with oral anticoagulants.

Concomitant use contraindicated: Yellow fever vaccine: risk of fatal generalised vaccinale disease (see section 4.3).

Concomitant use not recommended: Live attenuated vaccines (except yellow fever, for which concomitant use is contraindicated): risk of systemic, possibly fatal, disease. The risk is increased in subjects who are already immunosuppressed by their underlying disease. Use an inactivated vaccine where it exists (poliomyelitis) (see section 4.4).

4.6 Fertility, pregnancy and lactation

Women of childbearing potential/Contraception in males and females

Pemetrexed can have genetically damaging effects. Women of childbearing potential must use effective contraception during treatment with pemetrexed and for 6 months following completion of treatment.

Sexually mature males are advised to use effective contraceptive measures and not to father a child during the treatment and up to 3 months thereafter.

Pregnancy

There are no data from the use of pemetrexed in pregnant women but pemetrexed, like other anti-metabolites, is suspected to cause serious birth defects when administered during pregnancy. Animal

studies have shown reproductive toxicity (see section 5.3). Pemetrexed should not be used during pregnancy unless clearly necessary, after a careful consideration of the needs of the mother and the risk for the foetus (see section 4.4).

Breast-feeding

It is unknown whether pemetrexed is excreted in human milk and adverse reactions on the breast-fed child cannot be excluded. Breast-feeding must be discontinued during pemetrexed therapy (see section 4.3).

Fertility

Owing to the possibility of pemetrexed treatment causing irreversible infertility, men are advised to seek counselling on sperm storage before starting treatment.

4.7 Effects on ability to drive and use machines

Pemetrexed has no or negligible influence on the ability to drive and use machines. However, it has been reported that pemetrexed may cause fatigue. Therefore patients should be cautioned against driving or operating machines if this event occurs.

4.8 Undesirable effects

Summary of the safety profile

The most commonly reported undesirable effects related to pemetrexed, whether used as monotherapy or in combination, are bone marrow suppression manifested as anaemia, neutropenia, leukopenia, thrombocytopenia; and gastrointestinal toxicities, manifested as anorexia, nausea, vomiting, diarrhoea, constipation, pharyngitis, mucositis, and stomatitis. Other undesirable effects include renal toxicities, increased aminotransferases, alopecia, fatigue, dehydration, rash, infection/sepsis and neuropathy. Rarely seen events include Stevens-Johnson syndrome and toxic epidermal necrolysis.

Tabulated list of adverse reactions

The table 4 lists the adverse drug events regardless of causality associated with pemetrexed used either as a monotherapy treatment or in combination with cisplatin from the pivotal registration studies (JMCH, JMEI, JMBD, JMEN and PARAMOUNT) and from the post marketing period:-

ADRs are listed by MedDRA body system organ class. The following convention has been used for classification of frequency: very common: $\geq 1/10$; common: $\geq 1/100$ to $< 1/10$; uncommon: $\geq 1/1,000$ to $< 1/100$; rare: $\geq 1/10,000$ to $< 1/1,000$; very rare: $< 1/10,000$ and not known (cannot be estimated from the available data).

Table 4. Frequencies of all grades adverse drug events regardless of causality from the pivotal registration studies: JMEI (pemetrexed vs docetaxel), JMBD (pemetrexed and cisplatin versus gemcitabine and cisplatin, JMCH (pemetrexed plus cisplatin versus cisplatin), JMEN and PARAMOUNT (pemetrexed plus best supportive care versus placebo plus best supportive care) and from post-marketing period.

System Organ Class (MedDRA)	Very common	Common	Uncommon	Rare	Very rare	Not known
Infections and infestations	Infection ^a Pharyngitis	Sepsis ^b			Dermohypo dermitis	

Blood and lymphatic system disorders	Neutropenia Leukopenia Haemoglobin decreased	Febrile neutropenia Platelet count decreased	Pancytopenia	Autoimmune haemolytic anaemia		
Immune System disorders		Hypersensitivity		Anaphylactic shock		
Metabolism and nutrition disorders		Dehydration				
Nervous system disorders		Taste disorder Peripheral motor neuropathy Peripheral sensory neuropathy Dizziness	Cerebrovascular accident Ischaemic stroke Haemorrhage intracranial			
Eye disorders		Conjunctivitis Dry eye Lacrimation increased Keratoconjunctivitis sicca Eyelid oedema Ocular surface disease				
Cardiac disorders		Cardiac failure Arrhythmia	Angina Myocardial infarction Coronary artery disease Arrhythmia supraventricular			
Vascular disorders			Peripheral ischaemia ^c			
Respiratory, thoracic and mediastinal disorders			Pulmonary embolism Interstitial pneumonitis ^{bd}			
Gastrointestinal disorders	Stomatitis Anorexia Vomiting Diarrhoea Nausea	Dyspepsia Constipation Abdominal pain	Rectal haemorrhage Gastrointestinal haemorrhage Intestinal perforation Oesophagitis Colitis ^e			
Hepatobiliary disorders		Alanine aminotransferase increased Aspartate aminotransferase increased		Hepatitis		

Skin and subcutaneous tissue disorders	Rash Skin exfoliation	Hyperpigmentation Pruritus Erythema multiforme Alopecia Urticaria		Erythema	Stevens-Johnson syndrome ^b Toxic epidermal necrolysis ^b Pemphigoid Dermatitis bullous Acquired epidermolysis bullosa Erythematous oedema ^f Pseudocellulitis Dermatitis Eczema Prurigo	
Renal and urinary disorders	Creatinine clearance decreased Blood creatinine increased ^e	Renal failure Glomerular filtration rate decreased				Nephrogenic diabetes insipidus Renal tubular necrosis
General disorders and administration site conditions	Fatigue	Pyrexia Pain Oedema Chest pain Mucosal inflammation				
Investigations		Gamma-glutamyltransferase increased				
Injury, poisoning and procedural complications			Radiation oesophagitis Radiation pneumonitis	Recall phenomenon		

^a with and without neutropenia

^b in some cases fatal

^c sometimes leading to extremity necrosis

^d with respiratory insufficiency

^e seen only in combination with cisplatin

^f mainly of the lower limbs

Reporting of suspected adverse reactions

Reporting suspected adverse reactions after authorisation of the medicinal product is important. It allows continued monitoring of the benefit/risk balance of the medicinal product. Healthcare professionals are asked to report any suspected adverse reactions via the national reporting system listed in [Appendix V](#).

4.9 Overdose

Reported symptoms of overdose include neutropenia, anaemia, thrombocytopenia, mucositis, sensory polyneuropathy and rash. Anticipated complications of overdose include bone marrow suppression as manifested by neutropenia, thrombocytopenia and anaemia. In addition, infection with or without fever, diarrhoea, and/or mucositis may be seen. In the event of suspected overdose, patients should be monitored with blood counts and should receive supportive therapy as necessary. The use of calcium folinate / folinic acid in the management of pemetrexed overdose should be considered.

5. PHARMACOLOGICAL PROPERTIES

5.1 Pharmacodynamic properties

Pharmacotherapeutic group: antineoplastic agents, folic acid analogues, ATC code: L01BA04.

Pemetrexed is a multi-targeted anti-cancer antifolate agent that exerts its action by disrupting crucial folate-dependent metabolic processes essential for cell replication.

In vitro studies have shown that pemetrexed behaves as a multitargeted antifolate by inhibiting thymidylate synthase (TS), dihydrofolate reductase (DHFR), and glycinamide ribonucleotide formyltransferase (GARFT), which are key folate-dependent enzymes for the *de novo* biosynthesis of thymidine and purine nucleotides. Pemetrexed is transported into cells by both the reduced folate carrier and membrane folate binding protein transport systems. Once in the cell, pemetrexed is rapidly and efficiently converted to polyglutamate forms by the enzyme folylpolyglutamate synthetase. The polyglutamate forms are retained in cells and are even more potent inhibitors of TS and GARFT. Polyglutamation is a time- and concentration-dependent process that occurs in tumour cells and, to a lesser extent, in normal tissues. Polyglutamated metabolites have an increased intracellular half-life resulting in prolonged active substance action in malignant cells.

The European Medicines Agency has waived the obligation to submit the results of studies with pemetrexed in all subsets of the paediatric population in the granted indications (see section 4.2).

Clinical efficacy

Mesothelioma

EMPHACIS, a multicentre, randomised, single-blind phase 3 study of pemetrexed plus cisplatin versus cisplatin in chemo-naïve patients with malignant pleural mesothelioma, has shown that patients treated with pemetrexed and cisplatin had a clinically meaningful 2.8-month median survival advantage over patients receiving cisplatin alone.

During the study, low-dose folic acid and vitamin B₁₂ supplementation was introduced to patients therapy to reduce toxicity. The primary analysis of this study was performed on the population of all patients randomly assigned to a treatment arm who received study medicinal product (randomised and treated). A subgroup analysis was performed on patients who received folic acid and vitamin B₁₂ supplementation during the entire course of study therapy (fully supplemented). The results of these analyses of efficacy are summarised in the table below:

Table 5. Efficacy of pemetrexed plus cisplatin vs. cisplatin in malignant pleural mesothelioma

Efficacy parameter	Randomized and treated patients		Fully supplemented Patients	
	Pemetrexed/ cisplatin (N=226)	Cisplatin (N=222)	Pemetrexed/ cisplatin (N=168)	Cisplatin (N=163)
Median overall survival (months) (95% CI)	12.1 (10.0 - 14.4)	9.3 (7.8 - 10.7)	13.3 (11.4 - 14.9)	10.0 (8.4 - 11.9)
Log Rank p-value*	0.020		0.051	
Median time to tumour progression (months) (95% CI)	5.7 (4.9 - 6.5)	3.9 (2.8 - 4.4)	6.1 (5.3 - 7.0)	3.9 (2.8 - 4.5)
Log Rank p-value*	0.001		0.008	
Time to treatment failure (months) (95% CI)	4.5 (3.9 - 4.9)	2.7 (2.1 - 2.9)	4.7 (4.3 - 5.6)	2.7 (2.2 - 3.1)
Log Rank p-value*	0.001		0.001	
Overall response rate** (95% CI)	41.3% (34.8 - 48.1)	16.7% (12.0 - 22.2)	45.5% (37.8 - 53.4)	19.6% (13.8 - 26.6)
Fisher's exact p-value*	< 0.001		< 0.001	

Abbreviation: CI = confidence interval

*p-value refers to comparison between arms.

**In the pemetrexed/cisplatin arm, randomized and treated (N=225) and fully supplemented (N=167)

A statistically significant improvement of the clinically relevant symptoms (pain and dyspnoea) associated with malignant pleural mesothelioma in the pemetrexed /cisplatin arm (212 patients) versus the cisplatin arm alone (218 patients) was demonstrated using the Lung Cancer Symptom Scale. Statistically significant differences in pulmonary function tests were also observed. The separation between the treatment arms was achieved by improvement in lung function in the pemetrexed/cisplatin arm and deterioration of lung function over time in the control arm.

There are limited data in patients with malignant pleural mesothelioma treated with pemetrexed alone. Pemetrexed at a dose of 500 mg/m² was studied as a single-agent in 64 chemonaive patients with malignant pleural mesothelioma. The overall response rate was 14.1%.

NSCLC, second-line treatment

A multicentre, randomised, open label phase 3 study of pemetrexed versus docetaxel in patients with locally advanced or metastatic NSCLC after prior chemotherapy has shown median survival times of 8.3 months for patients treated with pemetrexed (Intent To Treat population n=283) and 7.9 months for patients treated with docetaxel (ITT n=288). Prior chemotherapy did not include pemetrexed. An analysis of the impact of NSCLC histology on the treatment effect on overall survival was in favour of pemetrexed versus docetaxel for other than predominantly squamous histologies (n = 399, 9.3 versus 8.0 months, adjusted HR=0.78; 95 % CI = 0.61-1.00, p=0.047) and was in favour of docetaxel for squamous cell carcinoma histology (n=172, 6.2 versus 7.4 months, adjusted HR = 1.56; 95 % CI = 1.08-2.26, p = 0.018). There were no clinically relevant differences observed for the safety profile of pemetrexed within the histology subgroups.

Limited clinical data from a separate randomized, Phase 3, controlled trial, suggest that efficacy data (overall survival, progression free survival) for pemetrexed are similar between patients previously pre-treated with docetaxel (n = 41) and patients who did not receive previous docetaxel treatment (n = 540).

Table 6. Efficacy of pemetrexed vs docetaxel in NSCLC - ITT population

	Pemetrexed	Docetaxel
Survival Time (months)	(n = 283)	(n = 288)
▪ Median (m)	8.3	7.9
▪ 95 % CI for median	(7.0 - 9.4)	(6.3 - 9.2)
▪ HR	0.99	
▪ 95 % CI for HR	(.82 - 1.20)	
▪ Non-inferiority p-value (HR)	.226	
Progression free survival (months)	(n = 283)	(n = 288)
▪ Median	2.9	2.9
▪ HR (95 % CI)	0.97 (.82 – 1.16)	
Time to treatment failure (TTTF – months)	(n = 283)	(n = 288)
▪ Median	2.3	2.1
▪ HR (95 % CI)	0.84 (.71 - .997)	
Response (n: qualified for response)	(n = 264)	(n = 274)
▪ Response rate (%) (95 % CI)	9.1 (5.9 - 13.2)	8.8 (5.7 - 12.8)
▪ Stable disease (%)	45.8	46.4

Abbreviations: CI = confidence interval; HR = hazard ratio; ITT = intent to treat; n = total population size.

NSCLC, first-line treatment

A multicentre, randomised, open-label, Phase 3 study of pemetrexed plus cisplatin versus gemcitabine plus cisplatin in chemo-naïve patients with locally advanced or metastatic (Stage IIIB or IV) non-small cell lung cancer (NSCLC) showed that pemetrexed plus cisplatin (Intent-To-Treat [ITT] population n=862) met its primary endpoint and showed similar clinical efficacy as gemcitabine plus cisplatin (ITT n=863) in overall survival (adjusted hazard ratio 0.94; 95 % CI=0.84-1.05). All patients included in this study had an ECOG performance status 0 or 1.

The primary efficacy analysis was based on the ITT population. Sensitivity analyses of main efficacy endpoints were also assessed on the Protocol Qualified (PQ) population. The efficacy analyses using PQ population are consistent with the analyses for the ITT population and support the non-inferiority of AC versus GC.

Progression free survival (PFS) and overall response rate were similar between treatment arms: median PFS was 4.8 months for pemetrexed plus cisplatin versus 5.1 months for gemcitabine plus cisplatin (adjusted hazard ratio 1.04; 95 % CI = 0.94-1.15), and overall response rate was 30.6% (95 % CI = 27.3-33.9) for pemetrexed plus cisplatin versus 28.2% (95 % CI = 25.0-31.4) for gemcitabine plus cisplatin. PFS data were partially confirmed by an independent review (400/1725 patients were randomly selected for review). The analysis of the impact of NSCLC histology on overall survival demonstrated clinically relevant differences in survival according to histology, see table below.

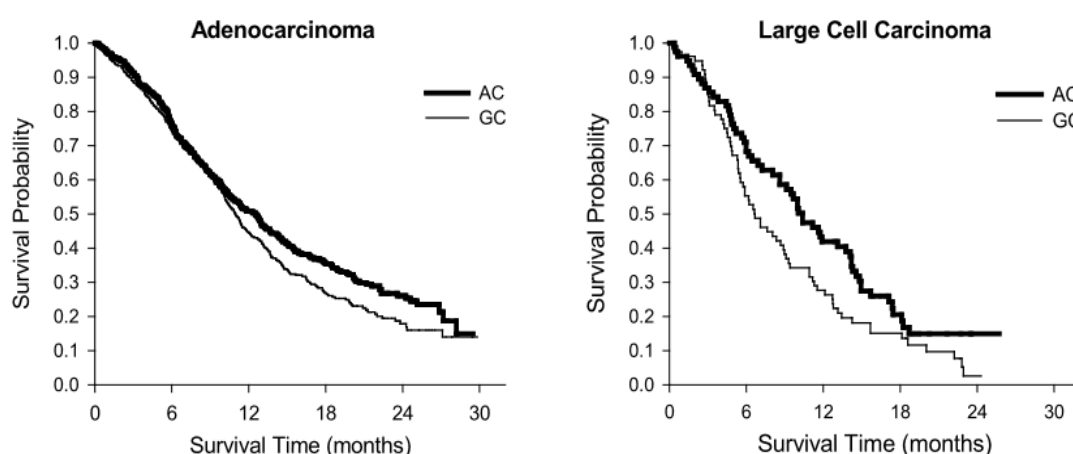
Table 7. Efficacy of pemetrexed + cisplatin vs. gemcitabine + cisplatin in first-line non-small cell lung cancer – ITT population and histology subgroups.

ITT population and histology subgroups	Median overall survival in months (95% CI)				Adjusted hazard ratio (HR) (95% CI)	Superiority p-value
	Pemetrexed + cisplatin		Gemcitabine + cisplatin			
ITT population (N = 1725)	10.3 (9.8 – 11.2)	N=862	10.3 (9.6 – 10.9)	N=863	0.94a (0.84 – 1.05)	0.259
Adenocarcinoma (N=847)	12.6 (10.7 – 13.6)	N=436	10.9 (10.2 – 11.9)	N=411	0.84 (0.71–0.99)	0.033
Large cell (N=153)	10.4 (8.6 – 14.1)	N=76	6.7 (5.5 – 9.0)	N=77	0.67 (0.48–0.96)	0.027
Other (N=252)	8.6 (6.8 – 10.2)	N=106	9.2 (8.1 – 10.6)	N=146	1.08 (0.81–1.45)	0.586
Squamous cell (N=473)	9.4 (8.4 – 10.2)	N=244	10.8 (9.5 – 12.1)	N=229	1.23 (1.00–1.51)	0.050

Abbreviations: CI = confidence interval; ITT = intent-to-treat; N = total population size.

^a Statistically significant for noninferiority, with the entire confidence interval for HR well below the 1.17645 noninferiority margin ($p < 0.001$).

Kaplan Meier plots of overall survival by histology



There were no clinically relevant differences observed for the safety profile of pemetrexed plus cisplatin within the histology subgroups.

Patients treated with pemetrexed and cisplatin required fewer transfusions (16.4% versus 28.9%, $p < 0.001$), red blood cell transfusions (16.1% versus 27.3%, $p < 0.001$) and platelet transfusions (1.8% versus 4.5%, $p = 0.002$). Patients also required lower administration of erythropoietin/darbopoietin (10.4% versus 18.1%, $p < 0.001$), G-CSF/GM-CSF (3.1% versus 6.1%, $p = 0.004$), and iron preparations (4.3% versus 7.0%, $p = 0.021$).

NSCLC, maintenance treatment

JMEN

A multicentre, randomised, double-blind, placebo-controlled Phase 3 study (JMEN), compared the efficacy and safety of maintenance treatment with pemetrexed plus best supportive care (BSC) ($n=441$) with that of placebo plus BSC ($n=222$) in patients with locally advanced (Stage IIIB) or metastatic (Stage IV) Non Small Cell Lung Cancer (NSCLC) who did not progress after 4 cycles of first line doublet therapy containing Cisplatin or Carboplatin in combination with Gemcitabine, Paclitaxel, or Docetaxel. First line doublet therapy containing pemetrexed was not included. All patients included in this study had an ECOG performance status 0 or 1. Patients received maintenance treatment until disease progression. Efficacy and safety were measured from the time of randomisation after completion of first line (induction) therapy. Patients received a median of 5 cycles of

maintenance treatment with pemetrexed and 3.5 cycles of placebo. A total of 213 patients (48.3%) completed ≥ 6 cycles and a total of 103 patients (23.4%) completed ≥ 10 cycles of treatment with pemetrexed.

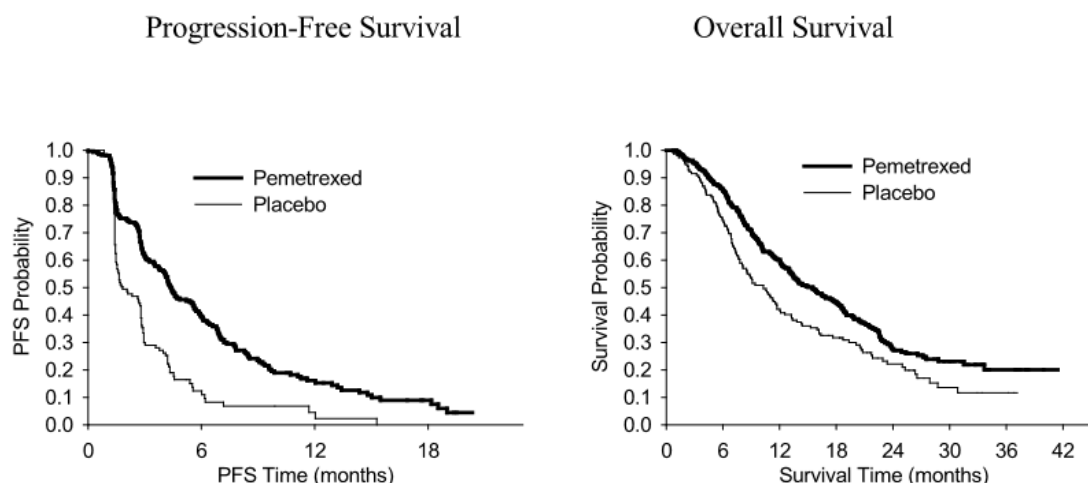
The study met its primary endpoint and showed a statistically significant improvement in PFS in the pemetrexed arm over the placebo arm (n=581, independently reviewed population; median of 4.0 months and 2.0 months, respectively) (hazard ratio=0.60, 95% CI=0.49-0.73, $p<0.00001$). The independent review of patient scans confirmed the findings of the investigator assessment of PFS. The median OS for the overall population (n=663) was 13.4 months for the pemetrexed arm and 10.6 months for the placebo arm, hazard ratio=0.79 (95% CI=0.65-0.95, $p=0.01192$).

Consistent with other pemetrexed studies, a difference in efficacy according to NSCLC histology was observed in JMEN. For patients with NSCLC other than predominantly squamous cell histology (n=430, independently reviewed population) median PFS was 4.4 months for the pemetrexed arm and 1.8 months for the placebo arm, hazard ratio=0.47 (95% CI=0.37-0.60, $p=0.00001$). The median OS for patients with NSCLC other than predominantly squamous cell histology (n=481) was 15.5 months for the pemetrexed arm and 10.3 months for the placebo arm, hazard ratio=0.70 (95% CI=0.56-0.88, $p=0.002$). Including the induction phase the median OS for patients with NSCLC other than predominantly squamous cell histology was 18.6 months for the pemetrexed arm and 13.6 months for the placebo arm, hazard ratio=0.71 (95% CI=0.56-0.88, $p=0.002$).

The PFS and OS results in patients with squamous cell histology suggested no advantage for pemetrexed over placebo.

There were no clinically relevant differences observed for the safety profile of pemetrexed within the histology subgroups.

JMEN: Kaplan Meier plots of progression-free survival (PFS) and overall survival pemetrexed versus placebo in patients with NSCLC other than predominantly squamous cell histology:



PARAMOUNT

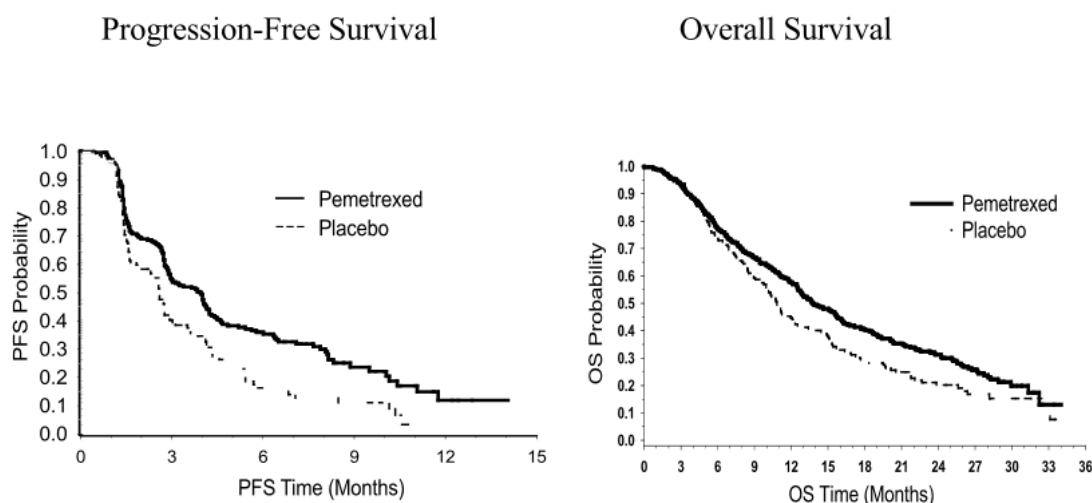
A multicentre, randomised, double-blind, placebo-controlled Phase 3 study (PARAMOUNT), compared the efficacy and safety of continuation maintenance treatment with pemetrexed plus BSC (n=359) with that of placebo plus BSC (n=180) in patients with locally advanced (Stage IIIB) or metastatic (Stage IV) NSCLC other than predominantly squamous cell histology who did not progress after 4 cycles of first line doublet therapy of pemetrexed in combination with cisplatin. Of the 939 patients treated with pemetrexed plus cisplatin induction, 539 patients were randomised to maintenance treatment with pemetrexed or placebo. Of the randomised patients, 44.9% had a complete/partial response and 51.9% had a response of stable disease to pemetrexed plus cisplatin induction. Patients randomised to maintenance treatment were required to have an ECOG performance status 0 or 1. The median time from the start of pemetrexed plus cisplatin induction therapy to the start

of maintenance treatment was 2.96 months on both the pemetrexed arm and the placebo arm. Randomised patients received maintenance treatment until disease progression. Efficacy and safety were measured from the time of randomisation after completion of first line (induction) therapy. Patients received a median of 4 cycles of maintenance treatment with pemetrexed and 4 cycles of placebo. A total of 169 patients (47.1 %) completed ≥ 6 cycles maintenance treatment with pemetrexed, representing at least 10 total cycles of pemetrexed.

The study met its primary endpoint and showed a statistically significant improvement in PFS in the pemetrexed arm over the placebo arm (n=472, independently reviewed population; median of 3.9 months and 2.6 months, respectively) (hazard ratio=0.64, 95 % CI=0.51-0.81, p=0.0002). The independent review of patient scans confirmed the findings of the investigator assessment of PFS. For randomised patients, as measured from the start of pemetrexed plus cisplatin first line induction treatment, the median investigator-assessed PFS was 6.9 months for the pemetrexed arm and 5.6 months for the placebo arm (hazard ratio = 0.59 95 % CI=0.47-0.74).

Following pemetrexed plus cisplatin induction (4 cycles), treatment with pemetrexed was statistically superior to placebo for OS (median 13.9 months versus 11.0 months, hazard ratio=0.78, 95 % CI=0.64-0.96, p=0.0195). At the time of this final survival analysis, 28.7% of patients were alive or lost to follow up on the pemetrexed arm versus 21.7% on the placebo arm. The relative treatment effect of pemetrexed was internally consistent across subgroups (including disease stage, induction response, ECOG PS, smoking status, gender, histology and age) and similar to that observed in the unadjusted OS and PFS analyses. The 1 year and 2 year survival rates for patients on pemetrexed were 58% and 32% respectively, compared to 45% and 21% for patients on placebo. From the start of pemetrexed plus cisplatin first line induction treatment, the median OS of patients was 16.9 months for the pemetrexed arm and 14.0 months for the placebo arm (hazard ratio=0.78, 95 % CI=0.64-0.96). The percentage of patients that received post study treatment was 64.3% for pemetrexed and 71.7% for placebo.

PARAMOUNT:Kaplan Meier plot of progression-free survival (PFS) and overall survival (OS) for continuation pemetrexed maintenance versus placebo in patients with NSCLC other than predominantly squamous cell histology (measured from randomisation)



The pemetrexed maintenance safety profiles from the two studies JMEN and PARAMOUNT were similar.

5.2 Pharmacokinetic properties

The pharmacokinetic properties of pemetrexed following single-agent administration have been evaluated in 426 cancer patients with a variety of solid tumours at doses ranging from 0.2 to 838 mg/m² infused over a 10 minute period. Pemetrexed has a steady-state volume of distribution of 9 l/m². *In vitro* studies indicate that pemetrexed is approximately 81% bound to plasma

proteins. Binding was not notably affected by varying degrees of renal impairment. Pemetrexed undergoes limited hepatic metabolism. Pemetrexed is primarily eliminated in the urine, with 70% to 90% of the administered dose being recovered unchanged in urine within the first 24 hours following administration. *In vitro* studies indicate that pemetrexed is actively secreted by OAT3 (organic anion transporter). Pemetrexed total systemic clearance is 91.8 ml/min and the elimination half-life from plasma is 3.5 hours in patients with normal renal function (creatinine clearance of 90 ml/min). Between patient variability in clearance is moderate at 19.3%. Pemetrexed total systemic exposure (AUC) and maximum plasma concentration increase proportionally with dose. The pharmacokinetics of pemetrexed are consistent over multiple treatment cycles.

The pharmacokinetic properties of pemetrexed are not influenced by concurrently administered cisplatin. Oral folic acid and intramuscular vitamin B₁₂ supplementation do not affect the pharmacokinetics of pemetrexed.

5.3 Preclinical safety data

Administration of pemetrexed to pregnant mice resulted in decreased foetal viability, decreased foetal weight, incomplete ossification of some skeletal structures and cleft palate.

Administration of pemetrexed to male mice resulted in reproductive toxicity characterised by reduced fertility rates and testicular atrophy. In a study conducted in beagle dog by intravenous bolus injection for 9 months, testicular findings (degeneration/necrosis of the seminiferous epithelium) have been observed. This suggests that pemetrexed may impair male fertility. Female fertility was not investigated.

Pemetrexed was not mutagenic in either the *in vitro* chromosome aberration test in Chinese hamster ovary cells, or the Ames test. Pemetrexed has been shown to be clastogenic in the *in vivo* micronucleus test in the mouse.

Studies to assess the carcinogenic potential of pemetrexed have not been conducted.

6. PHARMACEUTICAL PARTICULARS

6.1 List of excipients

Trometamol (for pH adjustment)
Citric acid
Methionine
Water for injections

6.2 Incompatibilities

Pemetrexed is physically incompatible with diluents containing calcium, including lactated Ringer's injection and Ringer's injection. In the absence of other compatibility studies this medicinal product must not be mixed with other medicinal products.

Armisarte contains trometamol as an excipient. Trometamol is incompatible with cisplatin resulting in degradation of cisplatin.

Intravenous lines should be flushed after administration of Armisarte.

6.3 Shelf life

Unopened vial

18 months.

Shelf life after first opening of the vial

4 ml vial (100 mg/4 ml)

Chemical and physical in-use stability has been demonstrated for 7 days at 2 °C-8 °C.

20 ml (500 mg/20 ml), 34 ml (850 mg/34 ml) and 40 ml (1000 mg/40 ml) vials

Chemical and physical in-use stability has been demonstrated for 14 days at 2 °C-8 °C.

The rubber stopper of a vial can be punctured and the contents be removed for a maximum of two times.

Diluted solution

Chemical and physical in-use stability of infusion solution of pemetrexed has been demonstrated in 5% glucose and 0.9% sodium chloride for 24 hours at room temperature and 7 days at refrigerated temperature.

From a microbiological point of view, the product should be used immediately. If not used immediately, in-use storage times and conditions prior to use are the responsibility of the user and would normally not be longer than 24 hours at 2 °C-8 °C, unless method of opening/dilution has taken place in controlled and validated aseptic conditions.

6.4 Special precautions for storage

Store and transport refrigerated (2 °C-8 °C).

Do not freeze.

Keep the vial in the outer carton in order to protect from light.

For storage conditions after dilution of the medicinal product, see section 6.3.

6.5 Nature and contents of container

Colourless glass vial (type I) with type I rubber (bromobutyl) serum stopper and an aluminium cap with polypropylene disk. Vials may or may not be sheathed in a protective sleeve.

Pack sizes

1 x 4 ml vial (100 mg/4 ml)

1 x 20 ml vial (500 mg/20 ml)

1 x 34 ml vial (850 mg/34 ml)

1 x 40 ml vial (1000 mg/40 ml)

Not all pack sizes may be marketed.

6.6 Special precautions for disposal and other handling

1. Use aseptic technique during dilution of pemetrexed for intravenous infusion administration.
2. Calculate the dose and the number of Armisarte vials needed.
3. Armisarte must only be diluted with 5% glucose solution or 0.9% sodium chloride solution, without preservative. The appropriate volume of pemetrexed concentrate must be diluted to 100 ml with 5% glucose solution or 0.9% sodium chloride solution and administered as an intravenous infusion over 10 minutes.

4. Pemetrexed infusion solutions prepared as directed above are compatible with polyvinyl chloride and polyolefin lined administration sets and infusion bags.
5. Parenteral medicinal products must be inspected visually for particulate matter and discolouration prior to administration. If particulate matter is observed, do not administer.
6. The rubber stopper of a vial can be punctured and the contents be removed for a maximum of two times. Any unused medicinal product left in the vial, which has exceeded the in-use shelf life, or waste material must be disposed of in accordance with local requirements.

Preparation and administration precautions

As with other potentially toxic anticancer agents, care should be exercised in the handling and preparation of pemetrexed infusion solutions. The use of gloves is recommended. If a pemetrexed solution contacts the skin, wash the skin immediately and thoroughly with soap and water. If pemetrexed solutions contact the mucous membranes, flush thoroughly with water. Pemetrexed is not a vesicant. There is not a specific antidote for extravasation of pemetrexed. There have been few reported cases of pemetrexed extravasation, which were not assessed as serious by the investigator. Extravasation should be managed by local standard practice as with other non-vesicants.

7. MARKETING AUTHORISATION HOLDER

Actavis Group PTC ehf.
Dalshraun 1
220 Hafnarfjörður
Iceland

8. MARKETING AUTHORISATION NUMBER(S)

EU/1/15/1063/001
EU/1/15/1063/002
EU/1/15/1063/003
EU/1/15/1063/004

9. DATE OF FIRST AUTHORISATION/RENEWAL OF THE AUTHORISATION

Date of first authorisation: 18 January 2016
Date of latest renewal: 13 August 2020

10. DATE OF REVISION OF THE TEXT

Detailed information on this medicinal product is available on the website of the European Medicines Agency <https://www.ema.europa.eu>.

ANNEX II

- A. MANUFACTURER(S) RESPONSIBLE FOR BATCH RELEASE**
- B. CONDITIONS OR RESTRICTIONS REGARDING SUPPLY AND USE**
- C. OTHER CONDITIONS AND REQUIREMENTS OF THE MARKETING AUTHORISATION**
- D. CONDITIONS OR RESTRICTIONS WITH REGARD TO THE SAFE AND EFFECTIVE USE OF THE MEDICINAL PRODUCT**

A. MANUFACTURER(S) RESPONSIBLE FOR BATCH RELEASE

Name and address of the manufacturers responsible for batch release

PLIVA CROATIA Ltd.
10000 Zagreb
Prilaz baruna Filipovića 25
Croatia

Actavis Italy S.p.A.
Via Pasteur 10
20014 Nerviano (Milan)
Italy

S.C. Sindan-Pharma S.R.L.
11 Ion Mihalache Blvd.
011171 Bucharest
Romania

The printed package leaflet of the medicinal product must state the name and address of the manufacturer responsible for the release of the concerned batch.

B. CONDITIONS OR RESTRICTIONS REGARDING SUPPLY AND USE

Medicinal product subject to restricted medical prescription (see Annex I: Summary of Product Characteristics, section 4.2).

C. OTHER CONDITIONS AND REQUIREMENTS OF THE MARKETING AUTHORISATION

- **Periodic safety update reports (PSURs)**

The requirements for submission of PSURs for this medicinal product are set out in the list of Union reference dates (EURD list) provided for under Article 107c(7) of Directive 2001/83/EC and any subsequent updates published on the European medicines web-portal.

D. CONDITIONS OR RESTRICTIONS WITH REGARD TO THE SAFE AND EFFECTIVE USE OF THE MEDICINAL PRODUCT

- **Risk management plan (RMP)**

The marketing authorisation holder (MAH) shall perform the required pharmacovigilance activities and interventions detailed in the agreed RMP presented in Module 1.8.2 of the marketing authorisation and any agreed subsequent updates of the RMP.

An updated RMP should be submitted:

- At the request of the European Medicines Agency;
- Whenever the risk management system is modified, especially as the result of new information being received that may lead to a significant change to the benefit/risk profile or as the result of an important (pharmacovigilance or risk minimisation) milestone being reached.

- **Additional risk minimisation measures**

Not applicable.

- **Obligation to conduct post-authorisation measures**

Not applicable.

ANNEX III

LABELLING AND PACKAGE LEAFLET

A. LABELLING

PARTICULARS TO APPEAR ON THE OUTER PACKAGING

CARTON

1. NAME OF THE MEDICINAL PRODUCT

Armisarte 25 mg/ml concentrate for solution for infusion
pemetrexed

2. STATEMENT OF ACTIVE SUBSTANCE(S)

Each ml of concentrate contains 25 mg pemetrexed (as pemetrexed diacid).

Each vial of 4 ml contains 100 mg pemetrexed (as pemetrexed diacid).

Each vial of 20 ml contains 500 mg pemetrexed (as pemetrexed diacid).

Each vial of 34 ml contains 850 mg pemetrexed (as pemetrexed diacid).

Each vial of 40 ml contains 1000 mg pemetrexed (as pemetrexed diacid).

3. LIST OF EXCIPIENTS

Excipients: trometamol, citric acid, methionine and water for injections.

4. PHARMACEUTICAL FORM AND CONTENTS

Concentrate for solution for infusion.

4 ml vial

20 ml vial

34 ml vial

40 ml vial

5. METHOD AND ROUTE(S) OF ADMINISTRATION

For intravenous use after dilution.

Must only be diluted in 5% glucose solution or in 0.9% sodium chloride solution.

Read the package leaflet before use.

6. SPECIAL WARNING THAT THE MEDICINAL PRODUCT MUST BE STORED OUT OF THE SIGHT AND REACH OF CHILDREN

Keep out of the sight and reach of children.

7. OTHER SPECIAL WARNING(S), IF NECESSARY

Cytotoxic

8. EXPIRY DATE

EXP

9. SPECIAL STORAGE CONDITIONS

Store and transport refrigerated.

Do not freeze.

Keep the vial in the outer carton to protect from light.

10. SPECIAL PRECAUTIONS FOR DISPOSAL OF UNUSED MEDICINAL PRODUCTS OR WASTE MATERIALS DERIVED FROM SUCH MEDICINAL PRODUCTS, IF APPROPRIATE**11. NAME AND ADDRESS OF THE MARKETING AUTHORISATION HOLDER**

Actavis Group PTC ehf.

220 Hafnarfjörður

Iceland

12. MARKETING AUTHORISATION NUMBER(S)

EU/1/15/1063/001 *4 ml vial*

EU/1/15/1063/002 *20 ml vial*

EU/1/15/1063/004 *34 ml vial*

EU/1/15/1063/003 *40 ml vial*

13. BATCH NUMBER

Lot

14. GENERAL CLASSIFICATION FOR SUPPLY**15. INSTRUCTIONS ON USE****16. INFORMATION IN BRAILLE**

Justification for not including Braille accepted.

17. UNIQUE IDENTIFIER – 2D BARCODE

2D barcode carrying the unique identifier included.

18. UNIQUE IDENTIFIER - HUMAN READABLE DATA
--

PC
SN
NN

MINIMUM PARTICULARS TO APPEAR ON SMALL IMMEDIATE PACKAGING UNITS VIAL LABEL
--

1. NAME OF THE MEDICINAL PRODUCT AND ROUTE(S) OF ADMINISTRATION
--

Armisarte 25 mg/ml sterile concentrate
pemetrexed
IV

2. METHOD OF ADMINISTRATION

3. EXPIRY DATE

EXP

4. BATCH NUMBER

Lot

5. CONTENTS BY WEIGHT, BY VOLUME OR BY UNIT
--

100 mg/4 ml

6. OTHER

Cytotoxic

MINIMUM PARTICULARS TO APPEAR ON SMALL IMMEDIATE PACKAGING UNITS VIAL LABEL
--

1. NAME OF THE MEDICINAL PRODUCT AND ROUTE(S) OF ADMINISTRATION
--

Armisarte 25 mg/ml concentrate for solution for infusion
pemetrexed
IV

2. METHOD OF ADMINISTRATION

3. EXPIRY DATE

EXP

4. BATCH NUMBER

Lot

5. CONTENTS BY WEIGHT, BY VOLUME OR BY UNIT
--

500 mg/20 ml
850 mg/34 ml
1000 mg/40 ml

6. OTHER

Cytotoxic

B. PACKAGE LEAFLET

Package leaflet: Information for the user

Armisarte 25 mg/ml concentrate for solution for infusion pemetrexed

Read all of this leaflet carefully before you start receiving this medicine because it contains important information for you.

- Keep this leaflet. You may need to read it again.
- If you have any further questions, ask your doctor or pharmacist.
- If you get any side effects, talk to your doctor, pharmacist or nurse. This includes any possible side effects not listed in this leaflet. See section 4.

What is in this leaflet

1. What Armisarte is and what it is used for
2. What you need to know before you use Armisarte
3. How to use Armisarte
4. Possible side effects
5. How to store Armisarte
6. Contents of the pack and other information

1. What Armisarte is and what it is used for

Armisarte is a medicine used in the treatment of cancer. It contains the active substance pemetrexed. Pemetrexed belongs to a group of medicines known as folic acid analogues and disrupts processes that are essential for cells to divide.

Armisarte is given in combination with cisplatin, another anti-cancer medicine, as treatment for malignant pleural mesothelioma, a form of cancer that affects the lining of the lung, to patients who have not received prior chemotherapy.

Armisarte is also given in combination with cisplatin for the initial treatment of patients with advanced stage of lung cancer.

Armisarte can be prescribed to you if you have lung cancer at an advanced stage if your disease has responded to treatment or it remains largely unchanged after initial chemotherapy.

Armisarte is also a treatment for patients with advanced stage of lung cancer whose disease has progressed after other initial chemotherapy has been used.

2. What you need to know before you use Armisarte

Do not use Armisarte

- if you are allergic to pemetrexed or any of the other ingredients of this medicine (listed in section 6).
- if you are breast-feeding; you must discontinue breast-feeding during treatment with Armisarte.
- if you have recently received or are about to receive a vaccine against yellow fever.

Warnings and precautions

Talk to your doctor or hospital pharmacist before receiving Armisarte.

If you currently have or have previously had problems with your kidneys, talk to your doctor or hospital pharmacist as you may not be able to receive Armisarte.

Before each infusion you will have samples of your blood taken to evaluate if you have sufficient kidney and liver function and to check that you have enough blood cells to receive Armisarte. Your doctor may decide to change the dose or delay treating you depending on your general condition and if

your blood cell counts are too low. If you are also receiving cisplatin, your doctor will make sure that you are properly hydrated and receive appropriate treatment before and after receiving cisplatin to prevent vomiting.

If you have had or are going to have radiation therapy, please tell your doctor, as there may be an early or late radiation reaction with Armisarte.

If you have been recently vaccinated, please tell your doctor, as this can possibly cause bad effects with Armisarte.

If you have heart disease or a history of heart disease, please tell your doctor.

If you have an accumulation of fluid around your lungs, your doctor may decide to remove the fluid before giving you Armisarte.

Children and adolescents

This medicine should not be used in children or adolescents, since there is no experience with this medicine in children and adolescents under 18 years of age.

Other medicines and Armisarte

Tell your doctor or pharmacist if you are taking, have recently taken or might take any other medicines, including medicine for pain or inflammation (swelling), such as medicines called “nonsteroidal anti-inflammatory medicinal products” (NSAIDs), including medicines purchased without a doctor’s prescription (such as ibuprofen). There are many sorts of NSAIDs with different durations of activity. Based on the planned date of your infusion of Armisarte and/or on the status of your kidney function, your doctor needs to advise you on which medicines you can take and when you can take them. If you are unsure, ask your doctor or pharmacist if any of your medicines are NSAIDs.

Please inform your doctor if you are taking medicines called proton pump inhibitors (omeprazole, esomeprazole, lansoprazole, pantoprazole, and rabeprazole) used to treat heartburn and acid regurgitation.

Like other chemotherapy medicines Armisarte is not recommended with live attenuated vaccines. Inactive vaccines should be used where possible.

Pregnancy

If you are pregnant, think you may be pregnant or are planning to have a baby, **tell your doctor**. The use of Armisarte should be avoided during pregnancy. Your doctor will discuss with you the potential risk of taking Armisarte during pregnancy. Women must use effective contraception during treatment with Armisarte and for 6 months after receiving the last dose.

Breast-feeding

If you are breast-feeding, tell your doctor.

Breast-feeding must be discontinued during treatment with Armisarte.

Fertility

Men are advised not to father a child during and up to 3 months following treatment with Armisarte and should therefore use effective contraception during treatment with Armisarte and for up to 3 months afterwards. If you would like to father a child during the treatment or in the 3 months following receipt of treatment, seek advice from your doctor or pharmacist. Armisarte can affect your ability to have children. Talk to your doctor to seek advice about sperm storage before starting your therapy.

Driving and using machines

Armisarte may make you feel tired. Be careful when driving a car or using machines.

3. How to use Armisarte

Armisarte 25 mg/ml concentrate for solution for infusion will always be given to you by a healthcare professional. The dose of Armisarte is 500 milligrams for every square metre of your body's surface area. Your height and weight are measured to work out the surface area of your body. Your doctor will use this body surface area to work out the right dose for you. This dose may be adjusted, or treatment may be delayed depending on your blood cell counts and on your general condition. A hospital pharmacist, nurse or doctor will have mixed the Armisarte concentrate with 5% glucose solution for injection or 0.9% sodium chloride solution for injection before it is given to you.

You will always receive Armisarte by infusion into one of your veins. The infusion will last approximately 10 minutes.

When using Armisarte in combination with cisplatin:

The doctor or hospital pharmacist will work out the dose you need based on your height and weight. Cisplatin is also given by infusion into one of your veins, and is given approximately 30 minutes after the infusion of Armisarte has finished. The infusion of cisplatin will last approximately 2 hours.

You should usually receive your infusion once every 3 weeks.

Additional medicines:

Corticosteroids: your doctor will prescribe you steroid tablets (equivalent to 4 milligram of dexamethasone twice a day) that you will need to take on the day before, on the day of, and the day after Armisarte treatment. This medicine is given to you to reduce the frequency and severity of skin reactions that you may experience during your anticancer treatment.

Vitamin supplementation: your doctor will prescribe you oral folic acid (vitamin) or a multivitamin containing folic acid (350 to 1000 micrograms) that you must take once a day while you are receiving Armisarte. You must take at least 5 doses during the seven days before the first dose of Armisarte. You must continue taking the folic acid for 21 days after the last dose of Armisarte. You will also receive an injection of vitamin B₁₂ (1000 micrograms) in the week before administration of Armisarte and then approximately every 9 weeks (corresponding to 3 courses of Armisarte treatment). Vitamin B₁₂ and folic acid are given to you to reduce the possible toxic effects of the anticancer treatment.

Your condition will be closely monitored during treatment. This routinely involves blood tests, including checks on your liver and kidney function. Your dose may be changed or treatment delayed depending on results from these tests.

If you have any further questions on the use of this medicine, ask your doctor or pharmacist.

4. Possible side effects

Like all medicines, this medicine can cause side effects, although not everybody gets them.

You must contact your doctor immediately if you notice any of the following:

- Fever or infection (respectively, common or very common): if you have a temperature of 38 °C or greater, sweating or other signs of infection (since you might have less white blood cells than normal which is very common). Infection (sepsis) may be severe and could lead to death
- If you start feeling chest pain (common) or having a fast heart rate (uncommon)
- If you have pain, redness, swelling or sores in your mouth (very common)
- Allergic reaction: if you develop skin rash (very common) / burning or prickling sensation (common), or fever (common). Rarely, skin reactions may be severe and could lead to death. Contact your doctor if you get a severe rash, or itching, or blistering (Stevens-Johnson Syndrome or Toxic epidermal necrolysis)
- If you experience tiredness, feeling faint, becoming easily breathless or if you look pale (since you might have less haemoglobin than normal which is very common)

- If you experience bleeding from the gums, nose or mouth or any bleeding that would not stop, reddish or pinkish urine, unexpected bruising (since you might have less platelets than normal which is common)
- If you experience sudden breathlessness, intense chest pain or cough with bloody sputum (uncommon)(may indicate a blood clot in the blood vessels of the lungs)

Other side effects with Armisarte may include:

Very common (may affect more than 1 in 10 people)

- Infection
- Pharyngitis (a sore throat)
- Low number of neutrophil granulocytes (a type of white blood cell)
- Low white blood cells
- Low haemoglobin level
- Pain, redness, swelling or sores in your mouth
- Loss of appetite
- Vomiting
- Diarrhoea
- Nausea
- Skin rash
- Flaking skin
- Abnormal blood tests showing reduced functionality of kidneys
- Fatigue (tiredness)

Common (may affect up to 1 in 10 people)

- Blood infection
- Fever with low number of neutrophil granulocytes (a type of white blood cell)
- Low platelet count
- Allergic reaction
- Loss of body fluids
- Taste change
- Damage to the motor nerves which may cause muscle weakness and atrophy (wasting) primary in the arms and legs)
- Damage to the sensory nerves that may cause lost of sensation, burning pain and unsteady gait
- Dizziness
- Inflammation or swelling of the conjunctiva (the membrane that lines the eyelids and covers the white of the eye)
- Dry eye
- Watery eyes
- Dryness of the conjunctiva (the membrane that lines the eyelids and covers the white of the eye) and cornea (the clear layer in front of the iris and pupil.
- Swelling of the eyelids
- Eye disorder with dryness, tearing, irritation, and/or pain
- Cardiac Failure (Condition that affects the pumping power of your heart muscles)
- Irregular heart rhythm
- Indigestion
- Constipation
- Abdominal pain
- Liver: increases in the chemicals in the blood made by the liver
- Increased skin pigmentation
- Itchy skin
- Rash on the body where each mark resembles a bullseye
- Hair loss
- Hives
- Kidney stop working
- Reduced functionality of kidney

- Fever
- Pain
- Excess fluid in body tissue, causing swelling
- Chest pain
- Inflammation and ulceration of the mucous membranes lining the digestive tract

Uncommon (may affect up to 1 in 100 people)

- Reduction in the number of red, white blood cells and platelets
- Stroke
- Type of stroke when an artery to the brain is blocked
- Bleeding inside the skull
- Angina (Chest pain caused by reduced blood flow to the heart)
- Heart attack
- Narrowing or blockage of the coronary arteries
- Increased heart rhythm
- Deficient blood distribution to the limbs
- Blockage in one of the pulmonary arteries in your lungs
- Inflammation and scarring of the lining of the lungs with breathing problems
- Passage of bright red blood from the anus
- Bleeding in the gastrointestinal tract
- Ruptured bowel
- Inflammation of the lining of the oesophagus
- Inflammation of the lining of the large bowel, which may be accompanied by intestinal or rectal bleeding (seen only in combination with cisplatin)
- Inflammation, edema, erythema, and erosion of the mucosal surface of the esophagus caused by radiation therapy
- Inflammation of the lung caused by radiation therapy

Rare (may affect up to 1 in 1,000 people)

- Destruction of red blood cells
- Anaphylactic shock (severe allergic reaction)
- Inflammatory condition of the liver
- Redness of the skin
- Skin rash that develops throughout a previously irradiated area

Very rare (may affect up to 1 of 10,000 people)

- Infections of skin and soft tissues
- Stevens-Johnson syndrome (a type of severe skin and mucous membranes reaction that may be life threatening)
- Toxic epidermal necrolysis (a type of severe skin reaction that may be life threatening)
- Autoimmune disorder that results in skin rashes and blistering on the legs, arms, and abdomen
- Inflammation of the skin characterized by the presence of bullae which are filled with fluid
- Skin fragility, blisters and erosions and skin scarring
- Redness, pain and swelling mainly of the lower limbs
- Inflammation of the skin and fat beneath the skin (pseudocellulitis)
- Inflammation of the skin (dermatitis)
- Skin to become inflamed, itchy, red, cracked, and rough
- Intensely itchy spots

Not known: frequency cannot be estimated from the available data

- Form of diabetes primarily due to pathology of the kidney
- Disorder of the kidneys involving the death of tubular epithelial cells that form the renal tubules

You might have any of these symptoms and/or conditions. You must tell your doctor as soon as possible when you start experiencing any of these side effects.

Reporting of side effects

If you get any side effects, talk to your doctor or nurse. This includes any possible side effects not listed in this leaflet. You can also report side effects directly via [the national reporting system listed in Appendix V](#). By reporting side effects you can help provide more information on the safety of this medicine.

5. How to store Armisarte

Keep this medicine out of the sight and reach of children.

Do not use this medicine after the expiry date which is stated on the label and carton after 'EXP'. The expiry date refers to the last day of that month.

Unopened vial

Store and transport refrigerated (2 °C-8 °C).

Do not freeze.

Keep the vial in the outer carton in order to protect from light.

After first opening of the vial

4 ml vial (100 mg/4 ml)

Chemical and physical in-use stability has been demonstrated for 7 days at 2 °C-8 °C.

20 ml (500 mg/20 ml), 34 ml (850 mg/34 ml) and 40 ml (1000 mg/40 ml) vials

Chemical and physical in-use stability has been demonstrated for 14 days at 2 °C-8 °C.

Infusion Solution

Chemical and physical in-use stability of infusion solution of pemetrexed was demonstrated for 24 hours at room temperature and 7 days at refrigerated temperature.

From a microbiological point of view, the product should be used immediately. If not used immediately, in-use storage times and conditions prior to use are the responsibility of the user and would normally not be longer than 24 hours at 2 °C-8 °C, unless method of opening/dilution has taken place in controlled and validated aseptic conditions.

Armisarte should not be used if there are any signs of particles.

Any unused concentrate left in the vial, which has exceeded the in-use shelf life, must be disposed of in accordance with local requirements.

6. Contents of the pack and other information

What Armisarte contains

The active substance is pemetrexed. Each ml of concentrate contains 25 mg pemetrexed (as pemetrexed diacid).

Each vial of 4 ml concentrate contains 100 mg pemetrexed (as pemetrexed diacid)

Each vial of 20 ml concentrate contains 500 mg pemetrexed (as pemetrexed diacid)

Each vial of 34 ml concentrate contains 850 mg pemetrexed (as pemetrexed diacid)

Each vial of 40 ml concentrate contains 1000 mg pemetrexed (as pemetrexed diacid)

The other ingredients are trometamol (for pH adjustment), citric acid, methionine and water for injection.

What Armisarte looks like and contents of the pack

Armisarte concentrate for solution for infusion (sterile concentrate) is a clear, colourless to slightly yellowish or yellow-greenish solution.

Armisarte is provided in a colourless glass vial with rubber stopper and an aluminium cap with polypropylene disk. Vials may or may not be sheathed in a protective sleeve.

Each pack of Armisarte contains one vial.

Pack sizes

1 x 4 ml vial (100 mg/4 ml)
1 x 20 ml vial (500 mg/20 ml)
1 x 34 ml vial (850 mg/34 ml)
1 x 40 ml vial (1000 mg/40 ml)

Not all pack sizes may be marketed.

Marketing Authorisation Holder

Actavis Group PTC ehf.
Dalshraun 1
220 Hafnarfjörður
Iceland

Manufacturer

PLIVA CROATIA Ltd.
10000 Zagreb
Prilaz baruna Filipovića 25
Croatia

Actavis Italy S.p.A.
Via Pasteur 10
20014 Nerviano (Milan)
Italy

S.C. Sindan-Pharma S.R.L.
11 Ion Mihalache Blvd.
011171 Bucharest
Romania

For any information about this medicine, please contact the local representative of the Marketing Authorisation Holder:

België/Belgique/Belgien

Teva Pharma Belgium N.V./S.A./AG
Tél/Tel: +32 38207373

България

Тева Фарма ЕАД
Тел: +359 24899585

Lietuva

UAB Teva Baltics
Tel: +370 52660203

Luxembourg/Luxemburg

Teva Pharma Belgium N.V./S.A./AG
Belgique/Belgien
Tél/Tel: +32 38207373

Česká republika

Teva Pharmaceuticals CR, s.r.o.
Tel: +420 251007111

Danmark

Teva Denmark A/S
Tlf: +45 44985511

Deutschland

ratiopharm GmbH
Tel: +49 73140202

Eesti

UAB Teva Baltics Eesti filiaal
Tel: +372 6610801

Ελλάδα

TEVA HELLAS A.E.
Τηλ: +30 2118805000

España

Teva Pharma, S.L.U.
Tel: +34 913873280

France

Teva Santé
Tél: +33 155917800

Hrvatska

Pliva Hrvatska d.o.o.
Tel: +385 13720000

Ireland

Teva Pharmaceuticals Ireland
Tel: +44 2075407117

Ísland

Teva Pharma Iceland ehf.
Sími: +354 5503300

Italia

Teva Italia S.r.l.
Tel: +39 028917981

Κύπρος

TEVA HELLAS A.E.
Ελλάδα
Τηλ: +30 2118805000

Latvija

UAB Teva Baltics filiāle Latvijā
Tel: +371 67323666

Magyarország

Teva Gyógyszergyár Zrt.
Tel: +36 12886400

Malta

Teva Pharmaceuticals Ireland
L-Irlanda
Tel: +44 2075407117

Nederland

Teva Nederland B.V.
Tel: +31 8000228400

Norge

Teva Norway AS
Tlf: +47 66775590

Österreich

ratiopharm Arzneimittel Vertriebs-GmbH
Tel: +43 1970070

Polska

Teva Pharmaceuticals Polska Sp. z o.o.
Tel: +48 223459300

Portugal

Teva Pharma - Produtos Farmacêuticos, Lda.
Tel: +351 214767550

România

Teva Pharmaceuticals S.R.L.
Tel: +40 212306524

Slovenija

Pliva Ljubljana d.o.o.
Tel: +386 15890390

Slovenská republika

TEVA Pharmaceuticals Slovakia s.r.o.
Tel: +421 257267911

Suomi/Finland

Teva Finland Oy
Puh/Tel: +358 201805900

Sverige

Teva Sweden AB
Tel: +46 42121100

This leaflet was last revised in

Other sources of information

Detailed information on this medicine is available on the European Medicines Agency web site:

<https://www.ema.europa.eu/>.

The following information is intended for medical or healthcare professionals only:

Instructions for use, handling and disposal

1. Use aseptic techniques during dilution of pemetrexed for intravenous infusion administration.
2. Calculate the dose and the number of Armisarte vials needed.
3. Armisarte must only be diluted with 5% glucose solution or 0.9% sodium chloride solution, without preservative. The appropriate volume of pemetrexed concentrate must be diluted to 100 ml with 5% glucose solution or 0.9% sodium chloride solution and administered as an intravenous infusion over 10 minutes.
4. Pemetrexed infusion solutions prepared as directed above are compatible with polyvinyl chloride and polyolefin lined administration sets and infusion bags. Pemetrexed is incompatible with diluents containing calcium, including lactated Ringer's Injection and Ringer's Injection.

Armisarte contains trometamol as an excipient. Trometamol is incompatible with cisplatin resulting in degradation of cisplatin. This medicinal product must not be mixed with other medicinal products. Intravenous lines should be flushed after administration of Armisarte.

5. Parenteral medicinal products should be inspected visually for particulate matter and discolouration prior to administration. If particulate matter is observed, do not administer.
6. The rubber stopper of a vial can be punctured and the contents be removed for a maximum of two times. Any unused medicinal product left in the vial, which has exceeded the in-use shelf life, or waste material should be disposed of in accordance with local requirements.

Preparation and administration precautions

As with other potentially toxic anticancer agents, care should be exercised in the handling and preparation of pemetrexed infusion solutions. The use of gloves is recommended. If a pemetrexed solution contacts the skin, wash the skin immediately and thoroughly with soap and water. If pemetrexed solutions contact the mucous membranes, flush thoroughly with water. Pemetrexed is not a vesicant. There is not a specific antidote for extravasation of pemetrexed. There have been a few reported cases of pemetrexed extravasation, which were not assessed as serious by the investigator. Extravasation should be managed by local standard practice as with other non-vesicants.

Diluted solution

Chemical and physical in-use stability of infusion solution of pemetrexed was demonstrated for 24 hours at room temperature and 7 days at refrigerated temperature. From a microbiological point of view, the product should be used immediately. If not used immediately, in-use storage times and conditions prior to use are the responsibility of the user and would normally not be longer than 24 hours at 2 °C-8 °C, unless dilution has taken place in controlled and validated aseptic conditions.

ANNEX IV

SCIENTIFIC CONCLUSIONS AND GROUNDS FOR THE VARIATION TO THE TERMS OF THE MARKETING AUTHORISATION(S)

Scientific conclusions

Taking into account the PRAC Assessment Report on the PSUR(s) for pemetrexed, the scientific conclusions of PRAC are as follows:

In view of available data on the pharmacokinetics of pemetrexed and considering in vitro studies indicated that pemetrexed is actively secreted by organic anion transporter 3 (OAT3) and IC50 values for proton pump inhibitors, the PRAC considers a drug-drug interaction between proton pump inhibitors and pemetrexed is at least a reasonable possibility. The PRAC concluded that the product information of products containing pemetrexed should be amended accordingly.

Having reviewed the PRAC recommendation, the CHMP agrees with the PRAC overall conclusions and grounds for recommendation.

Grounds for the variation to the terms of the marketing authorisation(s)

On the basis of the scientific conclusions for pemetrexed the CHMP is of the opinion that the benefit-risk balance of the medicinal product(s) containing pemetrexed is unchanged subject to the proposed changes to the product information.

The CHMP recommends that the terms of the marketing authorisation(s) should be varied.