

ANNEX I
SUMMARY OF PRODUCT CHARACTERISTICS

▼ This medicinal product is subject to additional monitoring. This will allow quick identification of new safety information. Healthcare professionals are asked to report any suspected adverse reactions. See Section 4.8 for how to report adverse reactions.

1. NAME OF THE MEDICINAL PRODUCT

Lonsurf 15 mg/6.14 mg film-coated tablets
Lonsurf 20 mg/8.19 mg film-coated tablets

2. QUALITATIVE AND QUANTITATIVE COMPOSITION

Lonsurf 15 mg/6.14 mg film-coated tablets

Each film-coated tablet contains 15 mg trifluridine and 6.14 mg tipiracil (as hydrochloride).

Excipient with known effect

Each film-coated tablet contains 90.735 mg of lactose monohydrate.

Lonsurf 20 mg/8.19 mg film-coated tablets

Each film-coated tablet contains 20 mg trifluridine and 8.19 mg tipiracil (as hydrochloride).

Excipient with known effect

Each film-coated tablet contains 120.980 mg of lactose monohydrate.

For the full list of excipients, see section 6.1.

3. PHARMACEUTICAL FORM

Film-coated tablet (tablet).

Lonsurf 15 mg/6.14 mg film-coated tablets

The tablet is a white, biconvex, round, film-coated tablet, with a diameter of 7.1 mm and a thickness of 2.7 mm, imprinted with '15' on one side, and '102' and '15 mg' on the other side, in grey ink.

Lonsurf 20 mg/8.19 mg film-coated tablets

The tablet is a pale red, biconvex, round, film-coated tablet, with a diameter of 7.6 mm and a thickness of 3.2 mm, imprinted with '20' on one side, and '102' and '20 mg' on the other side, in grey ink.

4. CLINICAL PARTICULARS

4.1 Therapeutic indications

Lonsurf is indicated for the treatment of adult patients with metastatic colorectal cancer (CRC) who have been previously treated with, or are not considered candidates for, available therapies including fluoropyrimidine-, oxaliplatin- and irinotecan-based chemotherapies, anti-VEGF agents, and anti-EGFR agents.

4.2 Posology and method of administration

Lonsurf should be prescribed by physicians experienced in the administration of anticancer therapy.

Posology

The recommended starting dose of Lonsurf in adults is 35 mg/m²/dose administered orally twice daily on Days 1 to 5 and Days 8 to 12 of each 28-day cycle as long as benefit is observed or until unacceptable toxicity occurs (see section 4.4).

The dosage is calculated according to body surface area (BSA) (see Table 1). The dosage must not exceed 80 mg/dose.

If doses were missed or held, the patient must not make up for missed doses.

Table 1 - Starting dose calculation according to body surface area (BSA)

Starting dose	BSA (m ²)	Dose in mg (2x daily)	Tablets per dose (2x daily)		Total daily dose (mg)
			15 mg/6.14 mg	20 mg/8.19 mg	
35 mg/m ²	< 1.07	35	1	1	70
	1.07 - 1.22	40	0	2	80
	1.23 - 1.37	45	3	0	90
	1.38 - 1.52	50	2	1	100
	1.53 - 1.68	55	1	2	110
	1.69 - 1.83	60	0	3	120
	1.84 - 1.98	65	3	1	130
	1.99 - 2.14	70	2	2	140
	2.15 - 2.29	75	1	3	150
	≥ 2.30	80	0	4	160

Recommended dose adjustments

Dosing adjustments may be required based on individual safety and tolerability.

A maximum of 3 dose reductions are permitted to a minimum dose of 20 mg/m² twice daily. Dose escalation is not permitted after it has been reduced.

In the event of haematological and/or non-haematological toxicities patients should follow the dose interruption, resumption and reduction criteria stated in Table 2, Table 3 and Table 4.

Table 2 - Dose interruption and resumption criteria for haematological toxicities related to myelosuppression

Parameter	Interruption criteria	Resumption criteria ^a
Neutrophils	< 0.5 × 10 ⁹ /L	≥ 1.5 × 10 ⁹ /L
Platelets	< 50 × 10 ⁹ /L	≥ 75 × 10 ⁹ /L

^a Resumption criteria applied to the start of the next cycle for all patients regardless of whether or not the interruption criteria were met.

Table 3 - Recommended dose modifications for Lonsurf in case of haematological and non-haematological adverse reactions

Adverse reaction	Recommended dose modifications
<ul style="list-style-type: none"> • Febrile neutropenia • CTCAE* Grade 4 neutropenia 	<ul style="list-style-type: none"> • Interrupt dosing until toxicity resolves to Grade 1 or baseline.

Adverse reaction	Recommended dose modifications
(< 0.5 x 10 ⁹ /L) or thrombocytopenia (< 25 x 10 ⁹ /L) that results in more than 1 week's delay in start of next cycle <ul style="list-style-type: none"> CTCAE* non-haematologic Grade 3 or Grade 4 adverse reaction; except for Grade 3 nausea and/or vomiting controlled by antiemetic therapy or diarrhoea responsive to antidiarrhoeal medicinal products 	<ul style="list-style-type: none"> When resuming dosing, decrease the dose level by 5 mg/m²/dose from the previous dose level (Table 4). Dose reductions are permitted to a minimum dose of 20 mg/m²/dose twice daily. Do not increase dose after it has been reduced.

* Common terminology criteria for adverse events

Table 4 - Dose reductions according to body surface area (BSA)

Reduced dose	BSA (m ²)	Dose in mg (2x daily)	Tablets per dose (2x daily)		Total daily dose (mg)
			15 mg/6.14 mg	20 mg/8.19 mg	
Level 1 dose reduction: From 35 mg/m² to 30 mg/m²					
30 mg/m²	< 1.09	30	2	0	60
	1.09 - 1.24	35	1	1	70
	1.25 - 1.39	40	0	2	80
	1.40 - 1.54	45	3	0	90
	1.55 - 1.69	50	2	1	100
	1.70 - 1.94	55	1	2	110
	1.95 - 2.09	60	0	3	120
	2.10 - 2.28	65	3	1	130
≥ 2.29	70	2	2	140	
Level 2 dose reduction: From 30 mg/m² to 25 mg/m²					
25 mg/m²	< 1.10	25 ^a	2 ^a	1 ^a	50 ^a
	1.10 - 1.29	30	2	0	60
	1.30 - 1.49	35	1	1	70
	1.50 - 1.69	40	0	2	80
	1.70 - 1.89	45	3	0	90
	1.90 - 2.09	50	2	1	100
	2.10 - 2.29	55	1	2	110
	≥ 2.30	60	0	3	120
Level 3 dose reduction: From 25 mg/m² to 20 mg/m²					
20 mg/m²	< 1.14	20	0	1	40
	1.14 - 1.34	25 ^a	2 ^a	1 ^a	50 ^a
	1.35 - 1.59	30	2	0	60
	1.60 - 1.94	35	1	1	70
	1.95 - 2.09	40	0	2	80
	2.10 - 2.34	45	3	0	90
	≥ 2.35	50	2	1	100

^a At a total daily dose of 50 mg, patients should take 1 x 20 mg/8.19 mg tablet in the morning and 2 x 15 mg/6.14 mg tablets in the evening.

Special populations

Renal impairment

- *Mild renal impairment (CrCl 60 to 89 mL/min) or moderate renal impairment (CrCl 30 to 59 mL/min)*

No adjustment of the starting dose is recommended in patients with mild or moderate renal impairment (see sections 4.4 and 5.2).

- *Severe renal impairment (CrCl below 30 mL/min) or end stage renal disease*

Administration is not recommended in patients with severe renal impairment or end stage renal disease as there are no data available for these patients (see section 4.4).

Hepatic impairment

- *Mild hepatic impairment*

No adjustment of the starting dose is recommended in patients with mild hepatic impairment (see section 5.2).

- *Moderate or severe hepatic impairment*

Administration is not recommended in patients with baseline moderate or severe hepatic impairment (National Cancer Institute [NCI] Criteria Group C and D defined by total bilirubin > 1.5 x ULN) as, a higher incidence of Grade 3 or 4 hyperbilirubinaemia is observed in patients with baseline moderate hepatic impairment, although this is based on very limited data (see sections 4.4 and 5.2).

Elderly

No adjustment of the starting dose is required in patients \geq 65 years old (see sections 4.8, 5.1 and 5.2). Efficacy and safety data in patients over 75 years old is limited.

Paediatric population

There is no relevant use of Lonsurf in the paediatric population for the indication of metastatic colorectal cancer.

Race

No adjustment of the starting dose is required on the basis of patient's race (see sections 5.1 and 5.2). There is limited data on Lonsurf in Black/African American patients but there is no biological rationale to expect any difference between this subgroup and the overall population.

Method of administration

Lonsurf is for oral use. The tablets must be taken with a glass of water within 1 hour after completion of the morning and evening meals.

4.3 Contraindications

Hypersensitivity to the active substances or to any of the excipients listed in section 6.1.

4.4 Special warnings and precautions for use

Bone marrow suppression

Lonsurf caused an increase in the incidence of myelosuppression including anaemia, neutropenia, leucopenia, and thrombocytopenia.

Complete blood cell counts must be obtained prior to initiation of therapy and as needed to monitor toxicity, but at a minimum, prior to each treatment cycle.

Treatment must not be started if the absolute neutrophil count is $< 1.5 \times 10^9/L$, if the platelet counts are $< 75 \times 10^9/L$, or if the patient has an unresolved Grade 3 or 4 non-haematological clinically relevant toxicity from prior therapies.

Serious infections have been reported following treatment with Lonsurf (see section 4.8). Given that the majority were reported in the context of bone marrow suppression, the patient's condition should be monitored closely, and appropriate measures, such as antimicrobial agents and granulocyte-colony stimulating factor (G-CSF), should be administered as clinically indicated. In the RECOURSE study, 9.4% of patients in the Lonsurf group received G-CSF mainly for therapeutic use.

Gastrointestinal toxicity

Lonsurf caused an increase in the incidence of gastrointestinal toxicities including nausea, vomiting and diarrhoea.

Patients with nausea, vomiting, diarrhoea and other gastrointestinal toxicities should be carefully monitored, and anti-emetic, anti-diarrhoeal and other measures, such as fluid/electrolyte replacement therapy, should be administered as clinically indicated. Dose modifications (delay and/or reduction) should be applied as necessary (see section 4.2).

Renal impairment

Lonsurf is not recommended for use in patients with severe renal impairment or end-stage renal disease (creatinine clearance [CrCl] < 30 mL/min or requiring dialysis, respectively), as Lonsurf has not been studied in these patients (see section 5.2).

Patients with moderate renal impairment (CrCl = 30 to 59 mL/min) had a higher incidence (defined as a difference of at least 5%) of \geq Grade 3 adverse events (AEs), serious AEs, and dose delays and reductions compared to the patients with normal (CrCl ≥ 90 mL/min) or mild renal impairment (CrCl = 60 to 89 mL/min). In addition, a higher exposure of trifluridine and tipiracil was observed in patients with moderate renal impairment, compared with patients with normal renal function or patients with mild renal impairment (see section 5.2). Patients with moderate renal impairment should be more frequently monitored for haematological toxicities.

Hepatic impairment

Lonsurf is not recommended for use in patients with baseline moderate or severe hepatic impairment (National Cancer Institute [NCI] Criteria Group C and D defined by total bilirubin $> 1.5 \times$ ULN), as a higher incidence of Grade 3 or 4 hyperbilirubinaemia is observed in patients with baseline moderate hepatic impairment, although this is based on very limited data (see section 5.2).

Proteinuria

Monitoring of proteinuria by dipstick urinalysis is recommended prior to starting and during therapy (see section 4.8).

Lactose intolerance

Lonsurf contains lactose. Patients with rare hereditary problems of galactose intolerance, the Lapp lactase deficiency or glucose-galactose malabsorption should not take this medicine.

4.5 Interaction with other medicinal products and other forms of interaction

In vitro studies indicated that trifluridine, tipiracil hydrochloride and 5-[trifluoromethyl] uracil (FTY) did not inhibit the activity of human cytochrome P450 (CYP) isoforms. *In vitro* evaluation indicated

that trifluridine, tipiracil hydrochloride and FTY had no inductive effect on human CYP isoforms (see section 5.2).

In vitro studies indicated that trifluridine is a substrate for the nucleoside transporters CNT1, ENT1 and ENT2. Therefore, caution is required when using medicinal products that interact with these transporters. Tipiracil hydrochloride was a substrate for OCT2 and MATE1, therefore, the concentration might be increased when Lonsurf is administered concomitantly with inhibitors of OCT2 or MATE1.

Caution is required when using medicinal products that are human thymidine kinase substrates, e.g., zidovudine. Such medicinal products, if used concomitantly with Lonsurf, may compete with the effector, trifluridine, for activation via thymidine kinases. Therefore, when using antiviral medicinal products that are human thymidine kinase substrates, monitor for possible decreased efficacy of the antiviral medicinal product, and consider switching to an alternative antiviral medicinal product that is not a human thymidine kinase substrate, such as lamivudine, zalcitabine, didanosine and abacavir (see section 5.1).

It is unknown whether Lonsurf may reduce the effectiveness of hormonal contraceptives. Therefore, women using hormonal contraceptive must also use a barrier contraceptive method.

4.6 Fertility, pregnancy and lactation

Women of childbearing potential / Contraception in males and females

Based on findings in animals, trifluridine may cause foetal harm when administered to pregnant women. Women should avoid becoming pregnant while taking Lonsurf and for up to 6 months after ending treatment. Therefore, women of child-bearing potential must use highly effective contraceptive measures while taking Lonsurf and for 6 months after stopping treatment. It is currently unknown whether Lonsurf may reduce the effectiveness of hormonal contraceptives, and therefore women using hormonal contraceptives should add a barrier contraceptive method.

Men with a partner of child-bearing potential must use effective contraception during treatment and for up to 6 months after discontinuation of treatment.

Pregnancy

There are no available data from the use of Lonsurf in pregnant women. Based on the mechanism of action, trifluridine is suspected to cause congenital malformations when administered during pregnancy. Studies in animals have shown reproductive toxicity (see section 5.3). Lonsurf should not be used during pregnancy unless the clinical condition of the woman requires treatment with Lonsurf.

Breast-feeding

It is unknown whether Lonsurf or its metabolites are excreted in human milk. Studies in animals have shown excretion of trifluridine, tipiracil hydrochloride and/or their metabolites in milk (see section 5.3). A risk to the suckling child cannot be excluded. Breast-feeding should be discontinued during treatment with Lonsurf.

Fertility

There are no data available on the effects of Lonsurf on human fertility. Results of animal studies did not indicate an effect of Lonsurf on male or female fertility (see section 5.3).

4.7 Effects on ability to drive and use machines

Lonsurf has minor influence on the ability to drive and use machines. Fatigue, dizziness or malaise may occur during treatment (see section 4.8).

4.8 Undesirable effects

Summary of safety profile

The most serious observed adverse drug reactions in patients receiving Lonsurf are bone marrow suppression and gastrointestinal toxicity (see section 4.4).

The most frequently observed adverse drug reactions ($\geq 30\%$) in patients receiving Lonsurf are neutropenia (54% [35% \geq Grade 3]), nausea (39% [1% \geq Grade 3]), fatigue (35% [4% \geq Grade 3]), anaemia (32% [13% \geq Grade 3]) and leucopenia (31% [12% \geq Grade 3]).

The most common adverse drug reactions in patients receiving Lonsurf that resulted in treatment discontinuation, dose reduction, dose delay, or dose interruption were neutropenia, general deterioration of health, anaemia, febrile neutropenia, fatigue, diarrhoea and dyspnoea.

Tabulated list of adverse drug reactions

The adverse drug reactions observed from the 533 patients with metastatic colorectal cancer, treated with a starting dose of 35 mg/m²/dose of Lonsurf, in the placebo-controlled Phase III (RECOURSE) clinical trial, are shown in Table 5. They are classified according to System Organ Class (SOC) and the appropriate Medical Dictionary for Regulatory (MedDRA) term is used to describe a certain drug reaction and its synonyms and related conditions.

Adverse drug reactions are grouped according to their frequencies. Frequency groups are defined by the following convention: very common ($\geq 1/10$); common ($\geq 1/100$ to $< 1/10$); and uncommon ($\geq 1/1,000$ to $< 1/100$).

Within each frequency group, adverse drug reactions are presented in order of decreasing seriousness.

Table 5 - Adverse drug reactions reported in patients with metastatic colorectal cancer treated with Lonsurf in the Phase III (RECOURSE) clinical trial

System Organ Class (MedDRA) ^a	Very common	Common	Uncommon
Infections and infestations		Lower respiratory tract infection Upper respiratory tract infection	Septic shock ^b Enteritis infectious Lung infection Biliary tract infection Influenza Urinary tract infection Gingival infection Herpes zoster Tinea pedis Candidiasis Bacterial infection Infection
Neoplasms benign, malignant and unspecified (incl. cysts and polyps)			Cancer pain
Blood and lymphatic system disorders	Neutropenia Leukopenia Anaemia Thrombocytopenia	Febrile neutropenia Lymphopenia Monocytosis	Pancytopenia Granulocytopenia Monocytopenia Erythropenia Leukocytosis

System Organ Class (MedDRA)^a	Very common	Common	Uncommon
Metabolism and nutrition disorders	Decreased appetite	Hypoalbuminaemia	Dehydration Hyperglycaemia Hyperkalaemia Hypokalaemia Hypophosphataemia Hypernatraemia Hyponatraemia Hypocalcaemia Gout
Psychiatric disorders		Insomnia	Anxiety
Nervous system disorders		Dysgeusia Neuropathy peripheral Dizziness Headache	Neurotoxicity Dysaesthesia Hyperaesthesia Hypoaesthesia Syncope Paraesthesia Burning sensation Lethargy
Eye disorders			Visual acuity reduced Vision blurred Diplopia Cataract Conjunctivitis Dry eye
Ear and labyrinth disorders			Vertigo Ear discomfort
Cardiac disorders			Angina pectoris Arrhythmia Palpitations
Vascular disorders		Flushing	Embolism Hypertension Hypotension
Respiratory, thoracic and mediastinal disorders		Dyspnoea Cough	Pulmonary embolism Pleural effusion Rhinorrhoea Dysphonia Oropharyngeal pain Epistaxis

System Organ Class (MedDRA)^a	Very common	Common	Uncommon
Gastrointestinal disorders	Diarrhoea Nausea Vomiting	Abdominal pain Constipation Stomatitis Oral disorder	Enterocolitis haemorrhagic Gastrointestinal haemorrhage Pancreatitis acute Ascites Ileus Subileus Colitis Gastritis Reflux gastritis Oesophagitis Impaired gastric emptying Abdominal distension Anal inflammation Mouth ulceration Dyspepsia Gastrooesophageal reflux disease Proctalgia Buccal polyp Gingival bleeding Glossitis Periodontal disease Tooth disorder Retching Flatulence Breath odour
Hepatobiliary disorders		Hyperbilirubinaemia	Hepatotoxicity Biliary dilatation
Skin and subcutaneous tissue disorders		Palmar-plantar erythrodysesthesia syndrome ^c Rash Alopecia Pruritus Dry skin	Skin exfoliation Urticaria Photosensitivity reaction Erythema Acne Hyperhidrosis Blister Nail Disorder
Musculoskeletal and connective tissue disorders			Joint swelling Arthralgia Bone pain Myalgia Musculoskeletal pain Muscular weakness Muscle spasms Pain in extremity Sensation of heaviness
Renal and urinary disorders		Proteinuria	Renal failure Cystitis noninfective Micturition disorder Haematuria Leukocyturia
Reproductive system and breast disorders			Menstrual disorder

System Organ Class (MedDRA) ^a	Very common	Common	Uncommon
General disorders and administration site conditions	Fatigue	Pyrexia Oedema Mucosal inflammation Malaise	General physical health deterioration Pain Feeling of body temperature change Xerosis
Investigations		Hepatic enzyme increased Blood alkaline phosphatase increased Weight decreased	Blood creatinine increased Electrocardiogram QT prolonged International normalised ratio increased Activated partial thromboplastin time prolonged Blood urea increased Blood lactate dehydrogenase increased Protein total decreased C-reactive protein increased Haematocrit decreased

- Different MedDRA preferred terms that were considered clinically similar have been grouped into a single term.
- Fatal cases have been reported.
- Hand-foot skin reaction.

Elderly

Patients 65 years of age or older who received Lonsurf had a higher incidence of the following events compared to patients younger than 65 years: Grade 3 or 4 neutropenia (48% vs 30%), Grade 3 anaemia (26% vs 12%), Grade 3 or 4 leucopenia (26% vs 18%) and Grade 3 or 4 thrombocytopenia (9% vs 2%).

Infections

In the Phase III (RECOURSE) clinical trial, treatment-related infections occurred more frequently in Lonsurf-treated patients (5.6%) compared to those receiving placebo (1.9%).

Proteinuria

In the RECOURSE clinical trial, treatment-related proteinuria occurred more frequently in Lonsurf-treated patients (2.8%) compared to those receiving placebo (1.5%), all of which were Grade 1 or 2 in severity (see section 4.4).

Radiotherapy

There was a slightly higher incidence of overall haematological and myelosuppression-related adverse reactions for patients who received prior radiotherapy compared to patients without prior radiotherapy in RECOURSE (54.6% versus 49.2%, respectively), of note febrile neutropenia was higher in Lonsurf-treated patients who received prior radiotherapy vs. those that did not.

Post-marketing experience in patients with unresectable advanced or recurrent colorectal cancer

There have been reports of interstitial lung disease in patients receiving Lonsurf post approval used in Japan.

Reporting of suspected adverse reactions

Reporting suspected adverse reactions after authorisation of the medicinal product is important. It allows continued monitoring of the benefit/risk balance of the medicinal product. Healthcare professionals are asked to report any suspected adverse reactions via [the national reporting system listed in Appendix V.](#)

4.9 Overdose

The highest dose of Lonsurf administered in clinical trials was 180 mg/m² per day.

The adverse drug reactions reported in association with overdoses were consistent with the established safety profile.

The primary anticipated complication of an overdose is bone marrow suppression.

There is no known antidote for an overdose of Lonsurf.

Medical management of an overdose should include customary therapeutic and supportive medical intervention aimed at correcting the presenting clinical manifestations and preventing their possible complications.

5. PHARMACOLOGICAL PROPERTIES

5.1 Pharmacodynamic properties

Pharmacotherapeutic group: antineoplastic agents, antimetabolites, ATC code: L01BC59

Mechanism of action

Lonsurf is comprised of an antineoplastic thymidine-based nucleoside analogue, trifluridine, and the thymidine phosphorylase (TPase) inhibitor, tipiracil hydrochloride, at a molar ratio 1:0.5 (weight ratio, 1:0.471).

Following uptake into cancer cells, trifluridine, is phosphorylated by thymidine kinase, further metabolised in cells to a deoxyribonucleic acid DNA substrate, and incorporated directly into DNA, thereby interfering with DNA function to prevent cell proliferation.

However, trifluridine is rapidly degraded by TPase and readily metabolised by a first-pass effect following oral administration, hence the inclusion of the TPase inhibitor, tipiracil hydrochloride.

In nonclinical studies, trifluridine/tipiracil hydrochloride demonstrated antitumour activity against both 5-fluorouracil (5-FU) sensitive and resistant colorectal cancer cell lines.

The cytotoxic activity of trifluridine/tipiracil hydrochloride against several human tumour xenografts correlated highly with the amount of trifluridine incorporated into DNA, suggesting this as the primary mechanism of action.

Pharmacodynamic effects

Lonsurf had no clinically relevant effect on QT/QTc prolongation compared with placebo in an open label study in patients with advanced solid tumours.

Clinical efficacy and safety

The clinical efficacy and safety of Lonsurf were evaluated in an international, randomised, double-blind, placebo-controlled Phase III study (RECOURSE) in patients with previously treated metastatic colorectal cancer. The primary efficacy endpoint was overall survival (OS), and supportive efficacy

endpoints were progression-free survival (PFS), overall response rate (ORR) and disease control rate (DCR).

In total, 800 patients were randomised 2:1 to receive Lonsurf (N = 534) plus best supportive care (BSC) or matching placebo (N = 266) plus BSC. Lonsurf dosing was based on BSA with a starting dose of 35 mg/m²/dose. Study treatment was administered orally twice daily after morning and evening meals for 5 days a week with 2 days rest for 2 weeks, followed by 14 days rest, repeated every 4 weeks. Patients continued therapy until disease progression or unacceptable toxicity (see section 4.2).

Of the 800 randomised patients, the median age was 63 years, 61% were male, 58% were Caucasian/White, 35% were Asian/Oriental, and 1% were Black/African American, and all patients had baseline Eastern Cooperative Oncology Group (ECOG) Performance Status (PS) of 0 or 1. The primary site of disease was colon (62%) or rectum (38%). KRAS status was wild (49%) or mutant (51%) at study entry. The median number of prior lines of therapy for metastatic disease was 3. All patients received prior treatment with fluoropyrimidine-, oxaliplatin-, and irinotecan-based chemotherapy. All but 1 patient received bevacizumab, and all but 2 patients with KRAS wild type tumours received panitumumab or cetuximab. The 2 treatment groups were comparable with respect to demographic and baseline disease characteristics.

An OS analysis of the study, carried out as planned at 72% (N = 574) of events, demonstrated a clinically meaningful and statistically significant survival benefit of Lonsurf plus BSC compared to placebo plus BSC (hazard ratio: 0.68; 95% confidence interval [CI] [0.58 to 0.81]; p < 0.0001) and a median OS of 7.1 months vs 5.3 months, respectively; with 1-year survival rates of 26.6% and 17.6%, respectively. PFS was significantly improved in patients receiving Lonsurf plus BSC (hazard ratio: 0.48; 95% CI [0.41 to 0.57]; p < 0.0001 (see Table 6, Figure 1 and Figure 2).

Table 6 - Efficacy results from the Phase III (RECOURSE) clinical trial

	Lonsurf plus BSC (N=534)	Placebo plus BSC (N=266)
Overall Survival		
Number of deaths, N (%)	364 (68.2)	210 (78.9)
Median OS (months) ^a [95% CI] ^b	7.1 [6.5, 7.8]	5.3 [4.6, 6.0]
Hazard ratio [95% CI]	0.68 [0.58, 0.81]	
P-value ^c	< 0.0001 (1-sided and 2-sided)	
Progression-Free Survival		
Number of Progression or Death, N (%)	472 (88.4)	251 (94.4)
Median PFS (months) ^a [95% CI] ^b	2.0 [1.9, 2.1]	1.7 [1.7, 1.8]
Hazard ratio [95% CI]	0.48 [0.41, 0.57]	
P-value ^c	<0.0001 (1-sided and 2-sided)	

^a Kaplan-Meier estimates

^b Methodology of Brookmeyer and Crowley

^c Stratified log-rank test (strata: KRAS status, time since diagnosis of first metastasis, region)

Figure 1- Kaplan-Meier curves of overall survival

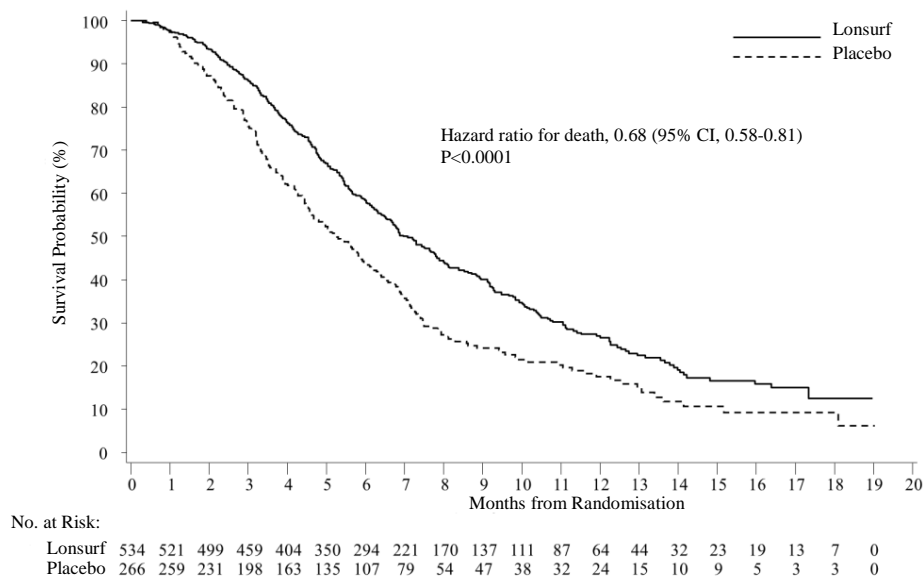
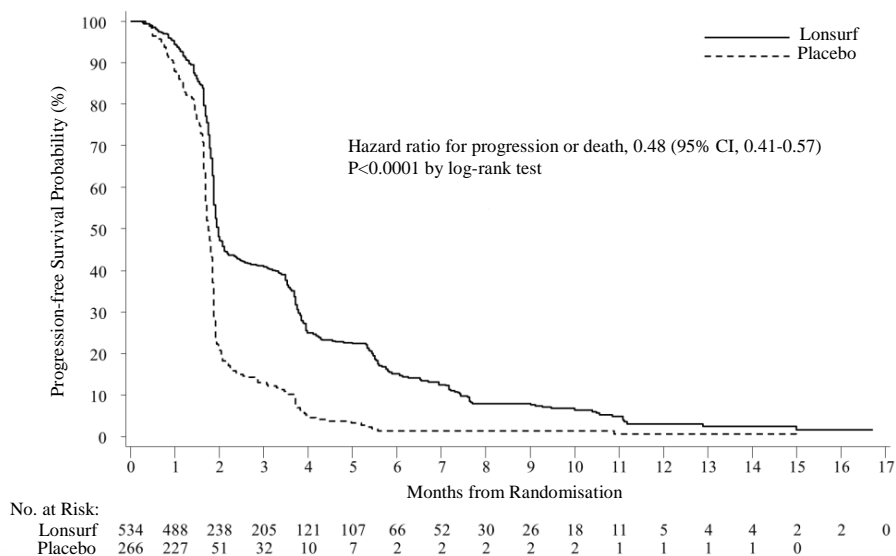


Figure 2 - Kaplan-Meier curves of progression-free survival



An updated OS analysis, carried out at 89% (N = 712) of events, confirmed the clinically meaningful and statistically significant survival benefit of Lonsurf plus BSC compared to placebo plus BSC (hazard ratio: 0.69; 95% CI [0.59 to 0.81]; p < 0.0001) and a median OS of 7.2 months vs 5.2 months; with 1-year survival rates of 27.1% and 16.6%, respectively.

The OS and PFS benefit was observed consistently, in all relevant pre-specified subgroups, including race, geographic region, age (< 65; ≥ 65), sex, ECOG PS, KRAS status, time since diagnosis of first metastasis, number of metastatic sites, and primary tumour site. The Lonsurf survival benefit was maintained after adjusting for all significant prognostic factors, namely, time since diagnosis of first metastasis, ECOG PS and number of metastatic sites (hazard ratio: 0.69; 95% CI [0.58 to 0.81]).

Sixty one percent (61%, N = 485) of all randomised patients received a fluoropyrimidine as part of their last treatment regimen prior to randomisation, of which 455 (94%) were refractory to the

fluoropyrimidine at that time. Among these patients, the OS benefit with Lonsurf was maintained (hazard ratio: 0.75, 95% CI [0.59 to 0.94]).

Eighteen percent (18%, N = 144) of all randomised patients received regorafenib prior to randomisation. Among these patients, the OS benefit with Lonsurf was maintained (hazard ratio: 0.69, 95% CI [0.45 to 1.05]). The effect was also maintained in regorafenib-naive patients (hazard ratio: 0.69, 95% CI [0.57 to 0.83]).

The DCR (complete response or partial response or stable disease) was significantly higher in patients treated with Lonsurf (44% vs 16%, $p < 0.0001$).

Treatment with Lonsurf plus BSC resulted in a statistically significant prolongation of PS < 2 in comparison to placebo plus BSC. The median time to PS ≥ 2 for the Lonsurf group and placebo group was 5.7 months and 4.0 months, respectively, with a hazard ratio of 0.66 (95% CI: [0.56, 0.78]), $p < 0.0001$.

Paediatric population

The European Medicines Agency has waived the obligation to submit the results of studies with Lonsurf in all subsets of the paediatric population in refractory metastatic colorectal cancer (see section 4.2 for information on paediatric use).

Elderly

There is limited data in patients between 75-84 years old (N=60). There were no patients 85 years or older in the RECURSE study and the Japanese phase 2 study. The effect of Lonsurf on overall survival was similar in patients < 65 years and ≥ 65 years of age.

5.2 Pharmacokinetic properties

Absorption

After oral administration of Lonsurf with [^{14}C]-trifluridine, at least 57% of the administered trifluridine was absorbed and only 3% of the dose was excreted into faeces. After oral administration of Lonsurf with [^{14}C]-tipiracil hydrochloride, at least 27% of the administered tipiracil hydrochloride was absorbed and 50% of the total radioactivity dose measured into faeces, suggestive of moderate gastrointestinal absorption of tipiracil hydrochloride.

Following a single dose of Lonsurf (35 mg/m^2) in patients with advanced solid tumours, the mean times to peak plasma concentrations (t_{max}) of trifluridine and tipiracil hydrochloride were around 2 hours and 3 hours, respectively.

In the pharmacokinetic (PK) analyses of the multiple dose administration of Lonsurf ($35 \text{ mg/m}^2/\text{dose}$, twice daily for 5 days a week with 2 days rest for 2 weeks followed by a 14-day rest, repeated every 4 weeks), trifluridine area under the concentration-time curve from time 0 to the last measurable concentration ($\text{AUC}_{0-\text{last}}$) was approximately 3-fold higher and maximum concentration (C_{max}) was approximately 2-fold higher after multiple dose administration (Day 12 of Cycle 1) of Lonsurf than after single-dose (Day 1 of Cycle 1).

However, there was no accumulation for tipiracil hydrochloride, and no further accumulation of trifluridine with successive cycles (Day 12 of Cycles 2 and 3) of administration of Lonsurf. Following multiple doses of Lonsurf ($35 \text{ mg/m}^2/\text{dose}$ twice daily) in patients with advanced solid tumours, the mean times to peak plasma concentrations (t_{max}) of trifluridine and tipiracil hydrochloride were around 2 hours and 3 hours, respectively.

Contribution of tipiracil hydrochloride

Single-dose administration of Lonsurf (35 mg/m²/dose) increased the mean AUC_{0-last} of trifluridine by 37-fold and C_{max} by 22-fold with reduced variability compared to trifluridine alone (35 mg/m²/dose).

Effect of food

When Lonsurf at a single dose of 35 mg/m² was administered to 14 patients with solid tumours after a standardised high-fat, high-calorie meal, trifluridine area under the concentration-time curve (AUC) did not change, but trifluridine C_{max}, tipiracil hydrochloride C_{max} and AUC decreased by approximately 40% compared to those in a fasting state. In clinical studies Lonsurf was administered within 1 hour after completion of the morning and evening meals (see section 4.2).

Distribution

The protein binding of trifluridine in human plasma was over 96% and trifluridine bound mainly to human serum albumin. Plasma protein binding of tipiracil hydrochloride was below 8%. Following a single dose of Lonsurf (35 mg/m²) in patients with advanced solid tumours, the apparent volume of distribution (Vd/F) for trifluridine and tipiracil hydrochloride was 21 L and 333 L, respectively.

Biotransformation

Trifluridine was mainly eliminated by metabolism via TPase to form an inactive metabolite, FTY. The absorbed trifluridine was metabolised, and excreted into urine as FTY and trifluridine glucuronide isomers. Other minor metabolites, 5-carboxyuracil and 5-carboxy-2'-deoxyuridine, were detected, but those levels in plasma and urine were at low or trace levels.

Tipiracil hydrochloride was not metabolised in human liver S9 or in cryopreserved human hepatocytes. Tipiracil hydrochloride was the major component and 6-hydroxymethyluracil was the major metabolite consistently in human plasma, urine, and faeces.

Elimination

Following the multiple-dose administration of Lonsurf at the recommended dose and regimen, the mean elimination half-life (t_{1/2}) for trifluridine on Day 1 of Cycle 1 and on Day 12 of Cycle 1 were 1.4 hours and 2.1 hours, respectively. The mean t_{1/2} values for tipiracil hydrochloride on Day 1 of Cycle 1 and on Day 12 of Cycle 1 were 2.1 hours and 2.4 hours, respectively.

Following a single dose of Lonsurf (35 mg/m²) in patients with advanced solid tumours, the oral clearance (CL/F) for trifluridine and tipiracil hydrochloride were 10.5 L/hr and 109 L/hr, respectively. After single oral administration of Lonsurf with [¹⁴C]-trifluridine, the total cumulative excretion of radioactivity was 60% of the administered dose. The majority of recovered radioactivity was eliminated into urine (55% of the dose) within 24 hours, and the excretion into faeces and expired air was less than 3% for both. After single oral administration of Lonsurf with [¹⁴C]-tipiracil hydrochloride, recovered radioactivity was 77% of the dose, which consisted of 27% urinary excretion and 50% faecal excretion.

Linearity/non-linearity

In a dose finding study (15 to 35 mg/m² twice daily), the AUC from time 0 to 10 hours (AUC₀₋₁₀) of trifluridine tended to increase more than expected based on the increase in dose; however, oral clearance (CL/F) and apparent volume of distribution (Vd/F) of trifluridine were generally constant at the dose range of 20 to 35mg/m². As for the other exposure parameters of trifluridine and tipiracil hydrochloride, those appeared to be dose proportional.

Pharmacokinetics in special populations

Age, gender and race

Based on the population PK analysis, there is no clinically relevant effect of age, gender or race on the PK of trifluridine or tipiracil hydrochloride.

Renal impairment

Of the 533 patients in the RECURSE study who received Lonsurf, 306 (57%) patients had normal renal function ($\text{CrCl} \geq 90 \text{ mL/min}$), 178 (33%) patients had mild renal impairment (CrCl 60 to 89 mL/min), and 47 (9%) had moderate renal impairment (CrCl 30 to 59 mL/min), with data missing for 2 patients. Patients with severe renal impairment were not enrolled in the study.

Based on a population PK analysis, the exposure of Lonsurf in patients with mild renal impairment ($\text{CrCl} = 60$ to 89 mL/min) was similar to those in patients with normal renal function ($\text{CrCl} \geq 90 \text{ mL/min}$). A higher exposure of Lonsurf was observed in moderate renal impairment ($\text{CrCl} = 30$ to 59 mL/min). Estimated (CrCl) was a significant covariate for CL/F in both final models of trifluridine and tipiracil hydrochloride. The mean relative ratio of AUC in patients with mild ($n=38$) and moderate ($n=16$) renal impairment compared to patients with normal renal function ($n=84$) were 1.31 and 1.43 for trifluridine, respectively, and 1.34 and 1.65 for tipiracil hydrochloride, respectively. The PK of trifluridine and tipiracil hydrochloride have not been studied in patients with severe renal impairment or end-stage renal disease (see section 4.4).

Hepatic impairment

Based on the population PK analysis, liver function parameters including alkaline phosphatase (ALP, 36-2322 U/L), aspartate aminotransferase (AST, 11-197 U/L), alanine aminotransferase (ALT, 5-182 U/L), and total bilirubin (0.17-3.20 mg/dL) were not significant covariates for PK parameters of either trifluridine or tipiracil hydrochloride. Serum albumin was found to significantly affect trifluridine clearance, with a negative correlation. For low albumin values ranging from 2.2 to 3.5 g/dL, the corresponding clearance values range from 4.2 to 3.1 L/h.

In a dedicated study the PK of trifluridine and tipiracil hydrochloride were evaluated in cancer patients with mild or moderate hepatic impairment (National Cancer Institute [NCI] Criteria Group B and C, respectively) and in patients with normal hepatic function. Based upon limited data with a considerable variability, no statistically significant differences were observed in the pharmacokinetics in patients with normal hepatic function versus patients with mild or moderate hepatic impairment. No correlation was seen for trifluridine nor tipiracil hydrochloride between PK parameters and AST or/and total blood bilirubin. Half-life time ($t_{1/2}$) and the accumulation ratio of trifluridine and tipiracil hydrochloride were similar between the moderate, mild and normal hepatic function patients. There is no need for a starting dose adjustment in patients with mild hepatic impairment (see section 4.2).

Gastrectomy

The influence of gastrectomy on PK parameters was not able to be examined in the population PK analysis because there were few patients who had undergone gastrectomy (1% of overall).

In vitro interaction studies

Trifluridine is a substrate of TPase, but is not metabolised by cytochrome P450 (CYP). Tipiracil hydrochloride is not metabolised in either human liver S9 or cryopreserved hepatocytes.

In vitro studies indicated that trifluridine, tipiracil hydrochloride and FTY (inactive metabolite of trifluridine) did not inhibit the CYP isoforms tested (CYP1A2, CYP2A6, CYP2B6, CYP2C8, CYP2C9, CYP2C19, CYP2D6, CYP2E1 and CYP3A4/5). *In vitro* evaluation indicated that trifluridine, tipiracil hydrochloride and FTY had no inductive effect on human CYP1A2, CYP2B6 or CYP3A4/5. Thus trifluridine and tipiracil hydrochloride are not expected to cause or be subject to a significant medicinal product interaction mediated by CYP.

In vitro evaluation of trifluridine and tipiracil hydrochloride was conducted using human uptake and efflux transporters (trifluridine with MDR1, OATP1B1, OATP1B3 and BCRP; tipiracil hydrochloride with OAT1, OAT3, OCT2, MATE1, MDR1 and BCRP). Neither trifluridine nor tipiracil hydrochloride was an inhibitor of or substrate for human uptake and efflux transporters based on *in vitro* studies, except for OCT2 and MATE1. Tipiracil hydrochloride was an inhibitor of OCT2 and MATE1 *in vitro*, but at concentrations substantially higher than human plasma C_{max} at steady state. Thus it is unlikely to cause an interaction with other medicinal products, at recommended doses, due to inhibition of OCT2 and MATE1. Transport of tipiracil hydrochloride by OCT2 and MATE1 might be affected when Lonsurf is administered concomitantly with inhibitors of OCT2 and MATE1.

Pharmacokinetic/pharmacodynamic relationship

The efficacy and safety of Lonsurf was compared between a high-exposure group (>median) and a low-exposure group (\leq median) based on the median AUC value of trifluridine. OS appeared more favourable in the high AUC group compared to the low AUC group (median OS of 9.3 vs. 8.1 months, respectively). All AUC groups performed better than placebo throughout the follow-up period. The incidences of Grade ≥ 3 neutropenia were higher in the high-trifluridine AUC group (47.8%) compared with the low-trifluridine AUC group (30.4%).

5.3 Preclinical safety data

Repeat-dose toxicity

Toxicology assessment of trifluridine/tipiracil hydrochloride was performed in rats, dogs and monkeys. The target organs identified were the lymphatic and haematopoietic systems and the gastrointestinal tract. All changes, i.e., leucopenia, anaemia, bone marrow hypoplasia, atrophic changes in the lymphatic and haematopoietic tissues and the gastrointestinal tract, were reversible within 9 weeks of drug withdrawal. Whitening, breakage, and malocclusion were observed in teeth of rats treated with trifluridine/tipiracil hydrochloride, which are considered rodent specific and not relevant for human.

Carcinogenesis and mutagenesis

No long term studies evaluating the carcinogenic potential of trifluridine/tipiracil hydrochloride in animals have been performed. Trifluridine was shown to be genotoxic in a reverse mutation test in bacteria, a chromosomal aberration test in mammal-cultured cells, and a micronucleus test in mice. Therefore, Lonsurf should be treated as a potential carcinogen.

Reproductive toxicity

Results of animal studies did not indicate an effect of trifluridine and tipiracil hydrochloride on male and female fertility in rats. The increases in the corpus luteum count and implanting embryo count observed in female rats at high doses were not considered adverse (see section 4.6). Lonsurf has been shown to cause embryo-foetal lethality and embryo-foetal toxicity in pregnant rats when given at dose levels lower than the clinical exposure. No peri/post-natal developmental toxicity studies have been performed.

6. PHARMACEUTICAL PARTICULARS

6.1 List of excipients

Tablet core

Lactose monohydrate
Starch, Pregelatinised (Maize)
Stearic acid

Film coating

Lonsurf 15 mg/6.14 mg film-coated tablets

Hypromellose
Macrogol (8000)
Titanium dioxide (E171)
Magnesium stearate

Lonsurf 20 mg/8.19 mg film-coated tablets

Hypromellose
Macrogol (8000)
Titanium dioxide (E171)
Iron oxide red (E172)
Magnesium stearate

Printing ink

Shellac
Iron oxide red (E172)
Iron oxide yellow (E172)
Titanium dioxide (E171)
Indigo carmine aluminium lake (E132)
Carnauba wax
Talc

6.2 Incompatibilities

Not applicable.

6.3 Shelf life

36 months.

6.4 Special precautions for storage

This medicinal product does not require any special storage conditions.

6.5 Nature and contents of container

Aluminium/Aluminium blister with laminated desiccant (Calcium oxide) containing 10 tablets.

Each pack contains 20, 40 or 60 film-coated tablets.

Not all pack sizes may be marketed.

6.6 Special precautions for disposal and other handling

Hands should be washed after handling the tablets.

Any unused medicinal product or waste material should be disposed of in accordance with local requirements.

7. MARKETING AUTHORISATION HOLDER

Les Laboratoires Servier

50 rue Carnot
92284 Suresnes Cedex
France

8. MARKETING AUTHORISATION NUMBER(S)

EU/1/16/1096/001-006

9. DATE OF FIRST AUTHORISATION/RENEWAL OF THE AUTHORISATION

Date of first authorisation: 25 April 2016

10. DATE OF REVISION OF THE TEXT

MM/YYYY

Detailed information on this medicinal product is available on the website of the European Medicines Agency <http://www.ema.europa.eu>.

ANNEX II

- A. MANUFACTURER(S) RESPONSIBLE FOR BATCH RELEASE**
- B. CONDITIONS OR RESTRICTIONS REGARDING SUPPLY AND USE**
- C. OTHER CONDITIONS AND REQUIREMENTS OF THE MARKETING AUTHORISATION**
- D. CONDITIONS OR RESTRICTIONS WITH REGARD TO THE SAFE AND EFFECTIVE USE OF THE MEDICINAL PRODUCT**

A. MANUFACTURER(S) RESPONSIBLE FOR BATCH RELEASE

Name and address of the manufacturer responsible for batch release

Les Laboratoires Servier Industrie
905, route de Saran
45520 Gidy
France

AndersonBrecon (UK) Limited, (Trading as PCI)
Units 2-7, Wye Valley Business Park
Brecon Road, Hay-on-Wye,
Hereford HR3 5PG
United Kingdom

The printed package leaflet of the medicinal product must state the name and address of the manufacturer responsible for the release of the concerned batch.

B. CONDITIONS OR RESTRICTIONS REGARDING SUPPLY AND USE

Medicinal product subject to restricted medical prescription (see Annex I: Summary of Product Characteristics, section 4.2).

C. OTHER CONDITIONS AND REQUIREMENTS OF THE MARKETING AUTHORISATION

• Periodic safety update reports

The requirements for submission of periodic safety update reports for this medicinal product are set out in the list of Union reference dates (EURD list) provided for under Article 107c(7) of Directive 2001/83/EC and any subsequent updates published on the European medicines web-portal.

The marketing authorisation holder shall submit the first periodic safety update report for this product within 6 months following authorisation.

D. CONDITIONS OR RESTRICTIONS WITH REGARD TO THE SAFE AND EFFECTIVE USE OF THE MEDICINAL PRODUCT

• Risk Management Plan (RMP)

The MAH shall perform the required pharmacovigilance activities and interventions detailed in the agreed RMP presented in Module 1.8.2 of the marketing authorisation and any agreed subsequent updates of the RMP.

An updated RMP should be submitted:

- At the request of the European Medicines Agency;
- Whenever the risk management system is modified, especially as the result of new information being received that may lead to a significant change to the benefit/risk profile or as the result of an important (pharmacovigilance or risk minimisation) milestone being reached.

ANNEX III
LABELLING AND PACKAGE LEAFLET

A. LABELLING

PARTICULARS TO APPEAR ON THE OUTER PACKAGING

OUTER CARTON

1. NAME OF THE MEDICINAL PRODUCT

Lonsurf 15 mg/6.14 mg film-coated tablets
trifluridine/tipiracil

2. STATEMENT OF ACTIVE SUBSTANCE(S)

Each film-coated tablet contains 15 mg trifluridine and 6.14 mg of tipiracil (as hydrochloride).

3. LIST OF EXCIPIENTS

Contains lactose monohydrate, see leaflet for further information.

4. PHARMACEUTICAL FORM AND CONTENTS

20 film-coated tablets
40 film-coated tablets
60 film-coated tablets

5. METHOD AND ROUTE(S) OF ADMINISTRATION

Oral use.
Read the package leaflet before use.

6. SPECIAL WARNING THAT THE MEDICINAL PRODUCT MUST BE STORED OUT OF THE SIGHT AND REACH OF CHILDREN

Keep out of the sight and reach of children.

7. OTHER SPECIAL WARNING(S), IF NECESSARY

Cytotoxic.

8. EXPIRY DATE

EXP

9. SPECIAL STORAGE CONDITIONS

10. SPECIAL PRECAUTIONS FOR DISPOSAL OF UNUSED MEDICINAL PRODUCTS OR WASTE MATERIALS DERIVED FROM SUCH MEDICINAL PRODUCTS, IF APPROPRIATE

11. NAME AND ADDRESS OF THE MARKETING AUTHORISATION HOLDER

Les Laboratoires Servier
50 rue Carnot
92284 Suresnes Cedex
France

12. MARKETING AUTHORISATION NUMBER(S)

EU/1/16/1096/001 20 film-coated tablets
EU/1/16/1096/002 40 film-coated tablets
EU/1/16/1096/003 60 film-coated tablets

13. BATCH NUMBER

Lot

14. GENERAL CLASSIFICATION FOR SUPPLY

15. INSTRUCTIONS ON USE

16. INFORMATION IN BRAILLE

Lonsurf 15 mg/6.14 mg

17. UNIQUE IDENTIFIER – 2D BARCODE

2D barcode carrying the unique identifier included.

18. UNIQUE IDENTIFIER - HUMAN READABLE DATA

PC:
SN:
NN:

MINIMUM PARTICULARS TO APPEAR ON BLISTERS OR STRIPS

BLISTER

1. NAME OF THE MEDICINAL PRODUCT

Lonsurf 15 mg/6.14 mg tablets
trifluridine/tipiracil

2. NAME OF THE MARKETING AUTHORISATION HOLDER

Les Laboratoires Servier

3. EXPIRY DATE

EXP

4. BATCH NUMBER

Lot

5. OTHER

PARTICULARS TO APPEAR ON THE OUTER PACKAGING

OUTER CARTON

1. NAME OF THE MEDICINAL PRODUCT

Lonsurf 20 mg/8.19 mg film-coated tablets
trifluridine/tipiracil

2. STATEMENT OF ACTIVE SUBSTANCE(S)

Each film-coated tablet contains 20 mg trifluridine and 8.19 mg of tipiracil (as hydrochloride).

3. LIST OF EXCIPIENTS

Contains lactose monohydrate, see leaflet for further information.

4. PHARMACEUTICAL FORM AND CONTENTS

20 film-coated tablets
40 film-coated tablets
60 film-coated tablets

5. METHOD AND ROUTE(S) OF ADMINISTRATION

Oral use.
Read the package leaflet before use.

6. SPECIAL WARNING THAT THE MEDICINAL PRODUCT MUST BE STORED OUT OF THE SIGHT AND REACH OF CHILDREN

Keep out of the sight and reach of children.

7. OTHER SPECIAL WARNING(S), IF NECESSARY

Cytotoxic.

8. EXPIRY DATE

EXP

9. SPECIAL STORAGE CONDITIONS

10. SPECIAL PRECAUTIONS FOR DISPOSAL OF UNUSED MEDICINAL PRODUCTS OR WASTE MATERIALS DERIVED FROM SUCH MEDICINAL PRODUCTS, IF APPROPRIATE

11. NAME AND ADDRESS OF THE MARKETING AUTHORISATION HOLDER

Les Laboratoires Servier
50 rue Carnot
92284 Suresnes Cedex
France

12. MARKETING AUTHORISATION NUMBER(S)

EU/1/16/1096/004 20 film-coated tablets
EU/1/16/1096/005 40 film-coated tablets
EU/1/16/1096/006 60 film-coated tablets

13. BATCH NUMBER

Lot

14. GENERAL CLASSIFICATION FOR SUPPLY

15. INSTRUCTIONS ON USE

16. INFORMATION IN BRAILLE

Lonsurf 20 mg/8.19 mg

17. UNIQUE IDENTIFIER – 2D BARCODE

2D barcode carrying the unique identifier included.

18. UNIQUE IDENTIFIER - HUMAN READABLE DATA

PC:
SN:
NN:

MINIMUM PARTICULARS TO APPEAR ON BLISTERS OR STRIPS

BLISTER

1. NAME OF THE MEDICINAL PRODUCT

Lonsurf 20 mg/8.19 mg tablets
trifluridine/tipiracil

2. NAME OF THE MARKETING AUTHORISATION HOLDER

Les Laboratoires Servier

3. EXPIRY DATE

EXP

4. BATCH NUMBER

Lot

5. OTHER

B. PACKAGE LEAFLET

Package leaflet: Information for the patient

Lonsurf 15 mg/6.14 mg film-coated tablets

Lonsurf 20 mg/8.19 mg film-coated tablets
trifluridine/tipiracil

▼ This medicine is subject to additional monitoring. This will allow quick identification of new safety information. You can help by reporting any side effects you may experience. See the end of Section 4 for how to report side effects.

Read all of this leaflet carefully before you start taking this medicine - because it contains important information for you.

- Keep this leaflet. You may need to read it again.
- If you have any further questions, ask your doctor or pharmacist.
- This medicine has been prescribed for you only. Do not pass it on to others. It may harm them, even if their signs of illness are the same as yours.
- If you experience any side effects, talk to your doctor or pharmacist. This includes any possible side effects not listed in this leaflet. See Section 4.

What is in this leaflet

1. What Lonsurf is and what it is used for
2. What you need to know before you take Lonsurf
3. How to take Lonsurf
4. Possible side effects
5. How to store Lonsurf
6. Contents of the pack and other information

1. What Lonsurf is and what it is used for

Lonsurf is a type of cancer chemotherapy which belongs to the group of medicines called "cytostatic antimetabolite medicines".

Lonsurf contains two different active substances: trifluridine and tipiracil.

- Trifluridine stops the growth of cancer cells.
- Tipiracil stops the trifluridine from being broken down by the body, helping trifluridine to work longer.

Lonsurf is used to treat adults with colon or rectal cancer - sometimes called 'colorectal' cancer.

- It is used when the cancer has spread to other parts of the body.
- It is used when other treatments have not worked - or when other treatments are not suitable for you.

2. What you need to know before you take Lonsurf

Do not take Lonsurf :

- if you are allergic to trifluridine or tipiracil or any of the other ingredients of this medicine (listed in section 6).

Do not take Lonsurf if the above applies to you. If you are not sure, talk to your doctor before taking Lonsurf.

Warnings and precautions

Talk to your doctor or pharmacist before taking Lonsurf if:

- you have kidney problems
- you have liver problems

If you are not sure, talk to your doctor or pharmacist before taking Lonsurf.

Treatment may lead to the following side effects (see section 4):

- a reduced number of certain types of white blood cells (neutropenia) which are important for protecting the body against bacterial or fungal infections. As a consequence of neutropenia, fever (febrile neutropenia) and blood infection (septic shock) may occur
- a reduced number of red blood cells (anaemia)
- a reduced number of platelets in the blood (thrombocytopenia) which are important to stop bleeding and work by clumping and clotting blood vessel injuries
- gastrointestinal problems.

Tests and checks

Your doctor will do blood tests before each cycle of Lonsurf. You start a new cycle every 4 weeks. The tests are needed because Lonsurf can sometimes affect your blood cells.

Children and adolescents

This medicine is not indicated for use in children and adolescents below the age of 18 years. This is because it may not work or be safe.

Other medicines and Lonsurf

Tell your doctor or pharmacist if you are taking, have recently taken or might take any other medicines. This includes medicines obtained without a prescription and herbal medicines. This is because Lonsurf can affect the way some other medicines work. Also some other medicines can affect the way Lonsurf works.

In particular tell your doctor or pharmacist if you are taking medicines used for treatment of HIV, such as zidovudine. This is because zidovudine may not work as well if you are taking Lonsurf. Talk to your doctor about whether to switch to a different HIV medicine.

If the above applies to you (or you are not sure), talk to your doctor or pharmacist before taking Lonsurf.

Pregnancy and breast-feeding

If you are pregnant or breast-feeding, or if you think you might be pregnant or are planning to have a baby, ask your doctor or pharmacist for advice before taking this medicine. Lonsurf may harm your unborn baby.

If you become pregnant, you and your doctor will have to decide if the benefits of Lonsurf are greater than the risk of harm to the baby.

Do not breast-feed if you are taking Lonsurf as it is not known whether Lonsurf passes into the mother's milk.

Contraception

You must not become pregnant while taking this medicine. This is because it may harm your unborn baby.

You and your partner should use effective methods of contraception while taking this medicine. You should also do this for 6 months after you stop taking the medicine. If you or your partner becomes pregnant during this time, you must talk to your doctor or pharmacist straight away.

Driving and using machines

It is not known whether Lonsurf changes your ability to drive or use machines. Do not drive or use any tools or machines if you experience symptoms that affect your ability to concentrate and react.

Lonsurf contains lactose

If you have been told by your doctor that you have an intolerance to some sugars, contact your doctor before taking this medicine.

3. How to take Lonsurf

Always take this medicine exactly as your doctor or pharmacist has told you. Check with your doctor or pharmacist if you are not sure.

How much to take

- Your doctor will decide the right dose for you - the dose depends on your weight and height.
- Your doctor will tell you how many tablets to take each time.
- You will take a dose 2 times a day.

How to take

You will take Lonsurf for 10 days during the first 2 weeks, and then have 2 weeks off. This 4 week period is called a 'cycle.' The specific dosing schedule is as follows:

- **Week 1**
 - take the dose 2 times a day for 5 days
 - then have 2 days off - no medicine
- **Week 2**
 - take the dose 2 times a day for 5 days
 - then have 2 days off - no medicine
- **Week 3**
 - No medicine
- **Week 4**
 - No medicine

You will then start again with another cycle of 4 weeks following the above pattern.

Lonsurf comes in two strengths. Your doctor may prescribe both strengths for your prescribed dose.

Taking this medicine

- Take this medicine by mouth.
- Swallow the tablets whole with a glass of water.
- Take within 1 hour after your morning and evening meal.
- Wash your hands after handling this medicine.

If you take more Lonsurf than you should

If you take more Lonsurf than you should, talk to a doctor or go to a hospital straight away. Take your pack(s) of medicine with you.

If you forget to take Lonsurf

- If you forget a dose, talk to your doctor or pharmacist.
- Do not take a double dose to make up for a forgotten dose.

If you have any further questions on the use of this medicine, ask your doctor or pharmacist.

4. Possible side effects

Like all medicines, this medicine can cause side effects, although not everybody gets them. The following side effects may happen with this medicine:

Serious side effects

Tell your doctor immediately if you notice any of the following serious side effects (many of the side effects are shown in laboratory tests - for example those affecting your blood cells):

- Neutropenia (*very common*), febrile neutropenia (*common*) and septic shock (*uncommon*). The signs include chills, fever, sweating or other sign of infection (see section 2).
- Anaemia (*very common*). The signs include feeling short of breath, tiredness or looking pale (see section 2).
- Vomiting (*very common*) and diarrhoea (*very common*), which may lead to a dehydration if severe or persistent.

- Severe gastrointestinal problems: abdominal pain (*common*), ascites (*uncommon*), colitis (*uncommon*), acute pancreatitis (*uncommon*), ileus (*uncommon*) and subileus (*uncommon*). The signs include intense stomach or abdominal pain that can be associated with vomiting, blocked or partly blocked bowel, fever or swelling of the abdomen.
- Thrombocytopenia (*very common*). The signs include unusual bruising or bleeding (see section 2).
- Pulmonary embolism (*uncommon*): blood clots in lungs. The signs include shortness of breath and pain in the chest or in the legs.
- Interstitial lung disease has been reported in patients receiving the medicine in Japan. The signs include difficulty in breathing, shortness of breath, with cough or fever.

Some of these serious side effects may lead to death.

Other side effects

Tell your doctor if you notice any of the following side effects. Many of the side effects are shown in laboratory tests - for example those affecting your blood cells. Your doctor will be looking out for these side effects in your test results.

Very common: may affect more than 1 in 10 people:

- decreased appetite
- feeling very tired (fatigue)
- feeling sick (nausea)
- reduced white blood cells called leucocytes - can increase your risk for infection

Common: may affect up to 1 in 10 people:

- fever
- hair loss
- weight loss
- changes in taste
- constipation
- feeling dizzy, headache
- feeling generally out of sorts (malaise)
- low levels of albumin or total protein in the blood
- increased bilirubin in your blood - can cause yellowing of skin or eyes
- increased number of white blood cells called monocytes
- reduced number of white blood cells called lymphocytes - can increase your risk for infection
- swelling in your hands or legs or feet
- redness, swelling, pain on the palms of your hands and soles of your feet (hand-foot syndrome)
- feeling of numbness or pins and needles in hands or feet
- mouth pain or problems
- swelling of mucous membranes - this could be inside the nose, mouth, throat, eyes, vagina, lungs or gut
- increased liver enzymes
- protein in your urine
- rash, itchy or flaky skin, skin flushing
- cough, feeling short of breath, infection of the sinuses, throat, airway or lungs, chest infections
- problem with sleeping or falling asleep

Uncommon: may affect up to 1 in 100 people

- low or high blood pressure
- blood clots, e.g. in the brain or legs
- blood test results indicating problems with clotting making you bleed more easily
- more noticeable heart-beat, chest pain
- abnormal increase or decrease in heart rate
- changes in your heart trace (ECG - electrocardiogram)
- increased white blood cells
- increased lactate dehydrogenase level in your blood

- low levels of phosphates, sodium, potassium or calcium in your blood
- reduced white blood cells called granulocytes or monocytes - can increase your risk for infection
- high blood sugar (hyperglycaemia), increased salt, urea, creatinine and potassium in your blood
- blood test result indicating inflammation (C-Reactive Protein increased)
- ear pain
- feeling of spinning (vertigo)
- runny or bloody nose, sinus problems
- sore throat, hoarse voice, problems with your voice
- redness, itching of the eye, eye infections, watery eyes
- dry eyes
- vision troubles as blurred vision, double vision, decreased vision, cataracts
- dehydration
- bloating, passing gas, indigestion
- pain or inflammation in upper or lower part of digestive tract
- inflammation, swelling or bleeding in your bowel
- inflammation and infection in your gut
- inflammation or increased acid in your stomach or gullet, reflux
- painful tongue, polyps inside your mouth, mouth ulcers, retching
- bad breath, tooth decay, tooth or gum problems, bleeding gums, gum infections
- dry skin
- swelling or pain in your joints or big toes
- pain or feeling heavy in your arms or legs
- pain, including pain from the cancer
- bone pain, muscle pain, muscle weakness or spasms, pain in tendons, nerves or ligaments
- feeling of being cold
- shingles (pain and vesicular rash on skin over nerve tracts affected by nerve inflammation from herpes zoster virus)
- liver disorder
- inflammation or infection of bile ducts, increase in the diameter of the bile duct
- kidney failure
- infections: bacterial, viral or fungal
- inflammation or infection in your bladder
- changes in urine test, blood in urine
- problems passing water (urine retention), loss of bladder control (incontinence)
- athlete's foot - fungal infection of feet, yeast infections
- accumulation of fluid in the lungs
- changes in the menstrual cycle
- anxiety
- passing out (syncope)
- burning sensation, unpleasant, increased or loss of sense of touch and other non-severe neurological troubles
- raised itchy rash, red skin, blisters, skin sloughing off, hives, acne
- sweating more than normal, sensitivity to light, nail problems

Reporting of side effects

If you experience any side effects, talk to your doctor or pharmacist. This includes any possible side effects not listed in this leaflet. You can also report side effects directly via [the national reporting system listed in Appendix V](#). By reporting side effects you can help provide more information on the safety of this medicine.

5. How to store Lonsurf

Keep this medicine out of the sight and reach of children.

Do not use this medicine after the expiry date which is stated on the outer carton or blister tray after “EXP.” The expiry date refers to the last day of that month.

This medicine does not require any special storage conditions.

Do not throw away any medicines via wastewater or household waste. Ask your pharmacist how to throw away medicines you no longer use. These measures will help to protect the environment.

6. Contents of the pack and other information

What Lonsurf contains

Lonsurf 15 mg/6.14 mg tablet

- The active substances are trifluridine and tipiracil. Each tablet contains 15 mg trifluridine and 6.14 mg tipiracil
- The other ingredients are:
 - Tablet core: lactose monohydrate, starch pregelatinised (Maize) and stearic acid.
 - Film coat: hypromellose, macrogol (8000), titanium dioxide (E171), and magnesium stearate.
 - Printing ink: shellac, iron oxide red (E172), iron oxide yellow (E172), titanium dioxide (E171), indigo carmine aluminium lake (E132), carnauba wax and talc.

Lonsurf 20 mg/8.19 mg tablet

- The active substances are trifluridine and tipiracil. Each tablet contains 20 mg trifluridine and 8.19 mg tipiracil.
- The other ingredients are:
 - Tablet core: lactose monohydrate, starch pregelatinised (Maize) and stearic acid.
 - Film coating: hypromellose, macrogol (8000), titanium dioxide (E171), iron oxide red (E172) and magnesium stearate.
 - Printing ink: shellac, iron oxide red (E172), iron oxide yellow (E172), titanium dioxide (E171), indigo carmine aluminium lake (E132), carnauba wax and talc.

What Lonsurf looks like and contents of the pack

- Lonsurf 15 mg/6.14 mg is a white, biconvex, round, film-coated tablet, printed with “15” on one side and “102” and “15 mg” on the other side in grey ink.
- Lonsurf 20 mg/8.19 mg is a pale red, biconvex, round, film-coated tablet, printed with “20” on one side and “102” and “20 mg” on the other side in grey ink.

Each pack contains 20 film-coated tablets (2 blisters of 10 tablets each) or 40 film-coated tablets (4 blisters of 10 tablets each), or 60 film-coated tablets (6 blisters of 10 tablets each).

Not all pack sizes may be marketed.

Marketing Authorisation Holder

Les Laboratoires Servier
50 rue Carnot
92284 Suresnes Cedex
France

Manufacturer

Les Laboratoires Servier Industrie
905, route de Saran
45520 Gidy
France

AndersonBrecon (UK) Limited, (Trading as PCI)
Units 2-7, Wye Valley Business Park

Brecon Road, Hay-on-Wye,
Hereford HR3 5PG
United Kingdom

For any information about this medicine, please contact the local representative of the Marketing Authorisation Holder:

België/Belgique/Belgien
S.A. Servier Benelux N.V.
Tel: +32 (0)2 529 43 11

България
Сервие Медикал ЕООД
Тел.: +359 2 921 57 00

Česká republika
Servier s.r.o.
Tel: +420 222 118 111

Danmark
Servier Danmark A/S
Tlf: +45 36 44 22 60

Deutschland
Servier Deutschland GmbH
Tel: +49 (0)89 57095 01

Eesti
Servier Laboratories OÜ
Tel:+ 372 664 5040

Ελλάδα
ΣΕΡΒΙΕ ΕΛΛΑΣ ΦΑΡΜΑΚΕΥΤΙΚΗ ΕΠΕ
Τηλ: +30 210 939 1000

España
Laboratorios Servier S.L.
Tel: +34 91 748 96 30

France
Les Laboratoires Servier
Tel: +33 (0)1 55 72 60 00

Hrvatska
Servier Pharma, d. o. o.
Tel.: +385 (0)1 3016 222

Ireland
Servier Laboratories (Ireland) Ltd.
Tel: +353 (0)1 663 8110

Ísland
Servier Laboratories
c/o Icepharma hf
Sími: +354 540 8000

Italia

Lietuva
UAB “SERVIER PHARMA”
Tel: +370 (5) 2 63 86 28

Luxembourg/Luxemburg
S.A. Servier Benelux N.V.
Tel: +32 (0)2 529 43 11

Magyarország
Servier Hungaria Kft.
Tel: +36 1 238 7799

Malta
GALEPHARMA Ltd
Tel: +(356) 21 247 082

Nederland
Servier Nederland Farma B.V.
Tel: +31 (0)71 5246700

Norge
Servier Danmark A/S
Tlf: +45 36 44 22 60

Österreich
Servier Austria GmbH
Tel: +43 (1) 524 39 99

Polska
Servier Polska Sp. z o.o.
Tel: +48 (0) 22 594 90 00

Portugal
Servier Portugal, Lda
Tel.: +351 21 312 20 00

România
Servier Pharma SRL
Tel: +4 021 528 52 80

Slovenija
Servier Pharma d. o. o.
Tel.: +386 (0)1 563 48 11

Slovenská republika
Servier Slovensko spol. s r.o.
Tel.:+421 (0) 2 5920 41 11

Suomi/Finland

Servier Italia S.p.A.
Tel: +39 06 669081

Κύπρος
C.A. Papaellinas Ltd.
Τηλ: +357 22741741

Latvija
SIA Servier Latvia
Tel: +371 67502039

Servier Finland Oy
P. /Tel: +358 (0)9 279 80 80

Sverige
Servier Sverige AB
Tel : +46 (0)8 522 508 00

United Kingdom
Servier Laboratories Ltd
Tel: +44 (0)1753 666409

This leaflet was last revised in

Other sources of information

Detailed information on this medicine is available on the European Medicines Agency web site:
<http://www.ema.europa.eu>.