

“Stakeholder perspective –Pharmacists”



EUROPEAN MEDICINES AGENCY
SCIENCE · MEDICINES · HEALTH

MBA
Health



HELLENIC REPUBLIC
National and Kapodistrian
University of Athens
— EST. 1837 —

Tuesday 15th December 2020

Prof. John Yfantopoulos University of Athens Greece

BIG-DATA: Structure

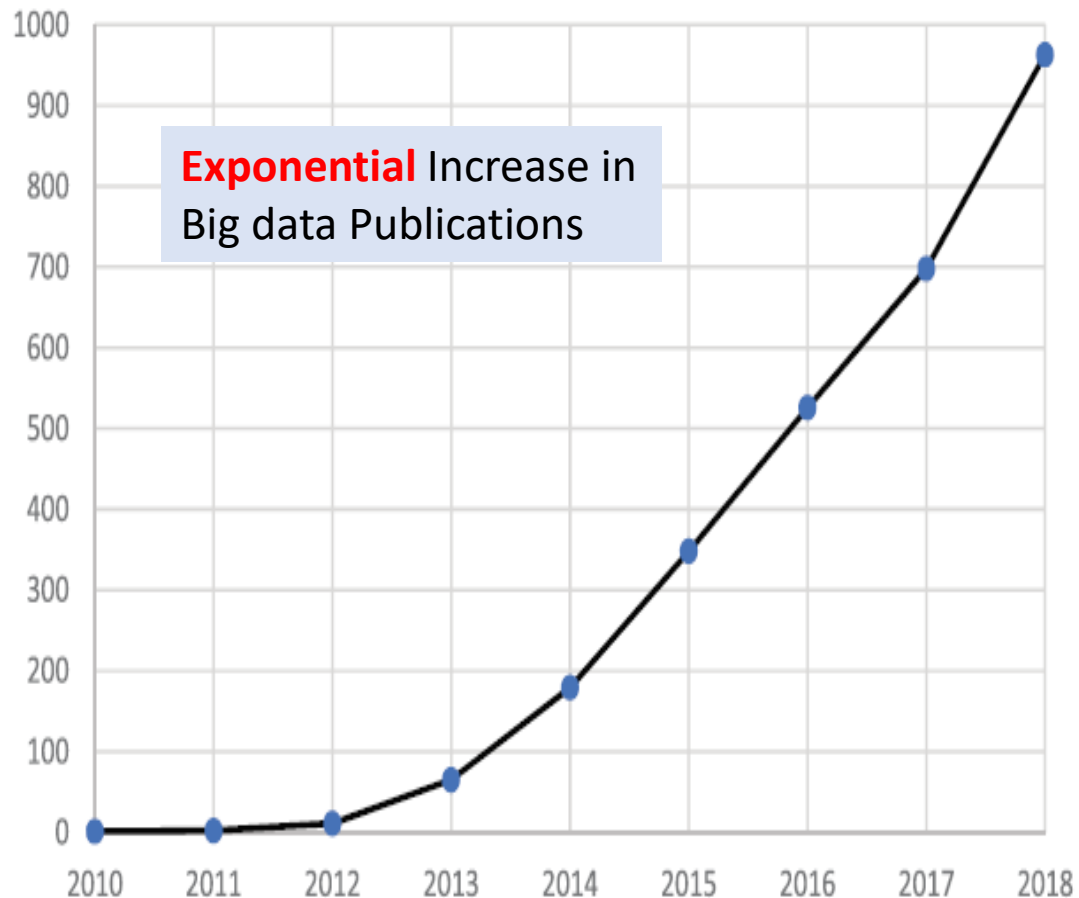
- Brief Remarks on European Commission
- Priorities
- Opportunities
- Areas of Collaboration

European Commission's Term of Big data

- Big Data in health encompasses
- high **volume**,
- high **diversity** biological,
- **clinical, environmental**, and
- **lifestyle** information collected from
- single **individuals** (**Personalized Medicine**) to large cohorts, in relation to their **health** and **wellness status**, at one or several time points.

Professor John Yfantopoulos University of Athens

European Commission: Big Data in Public Health



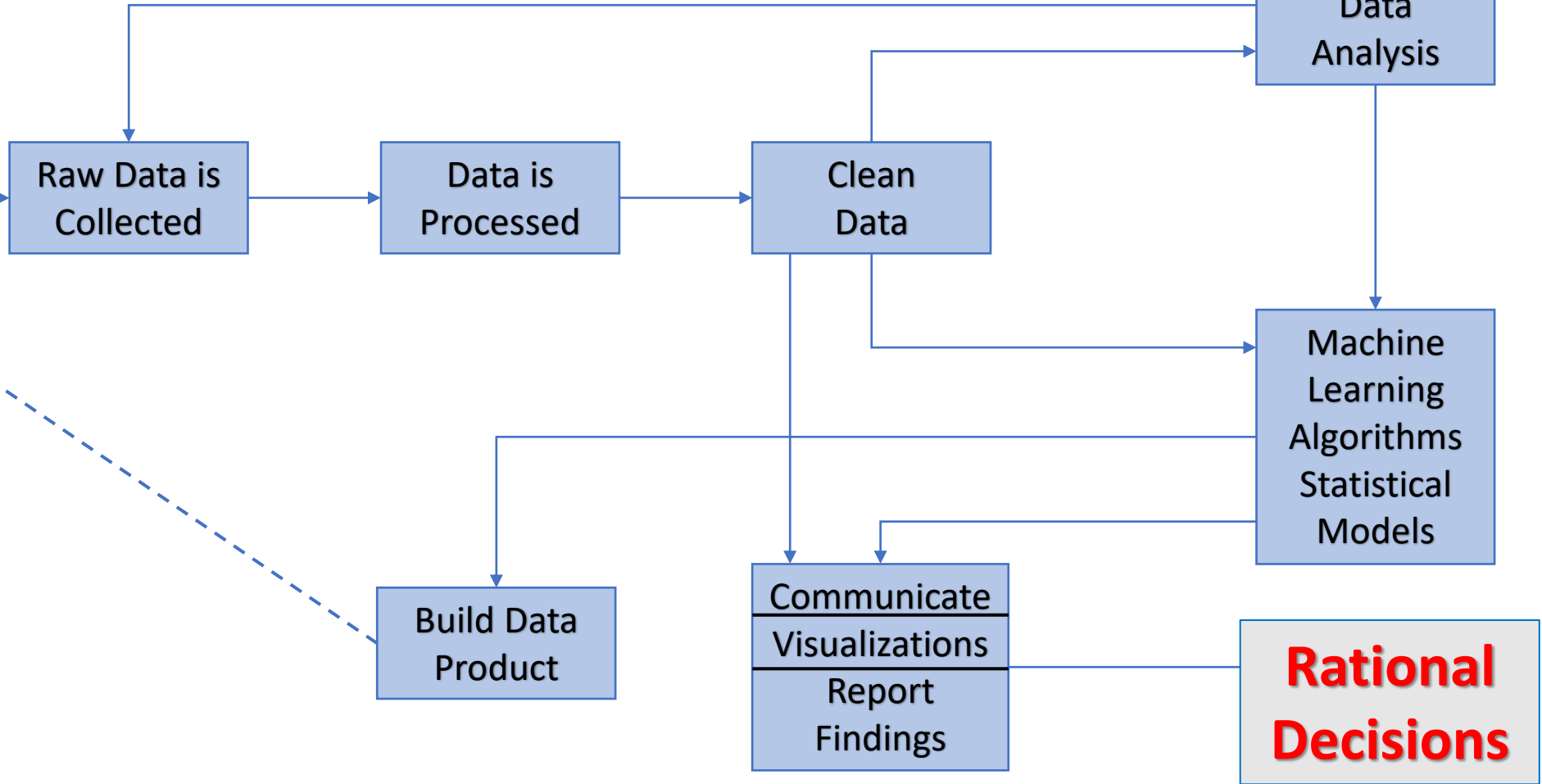
- increasing **earlier diagnosis** and the **effectiveness** and **quality** of treatments
- widening possibilities for **prevention** of diseases by identification of **risk factors** for disease
- improvement of **pharmacovigilance** and **patient safety**
- ability to make more **informed decisions**
- prediction of health **outcomes** & **Health Related Quality of Life (HRQoL)**

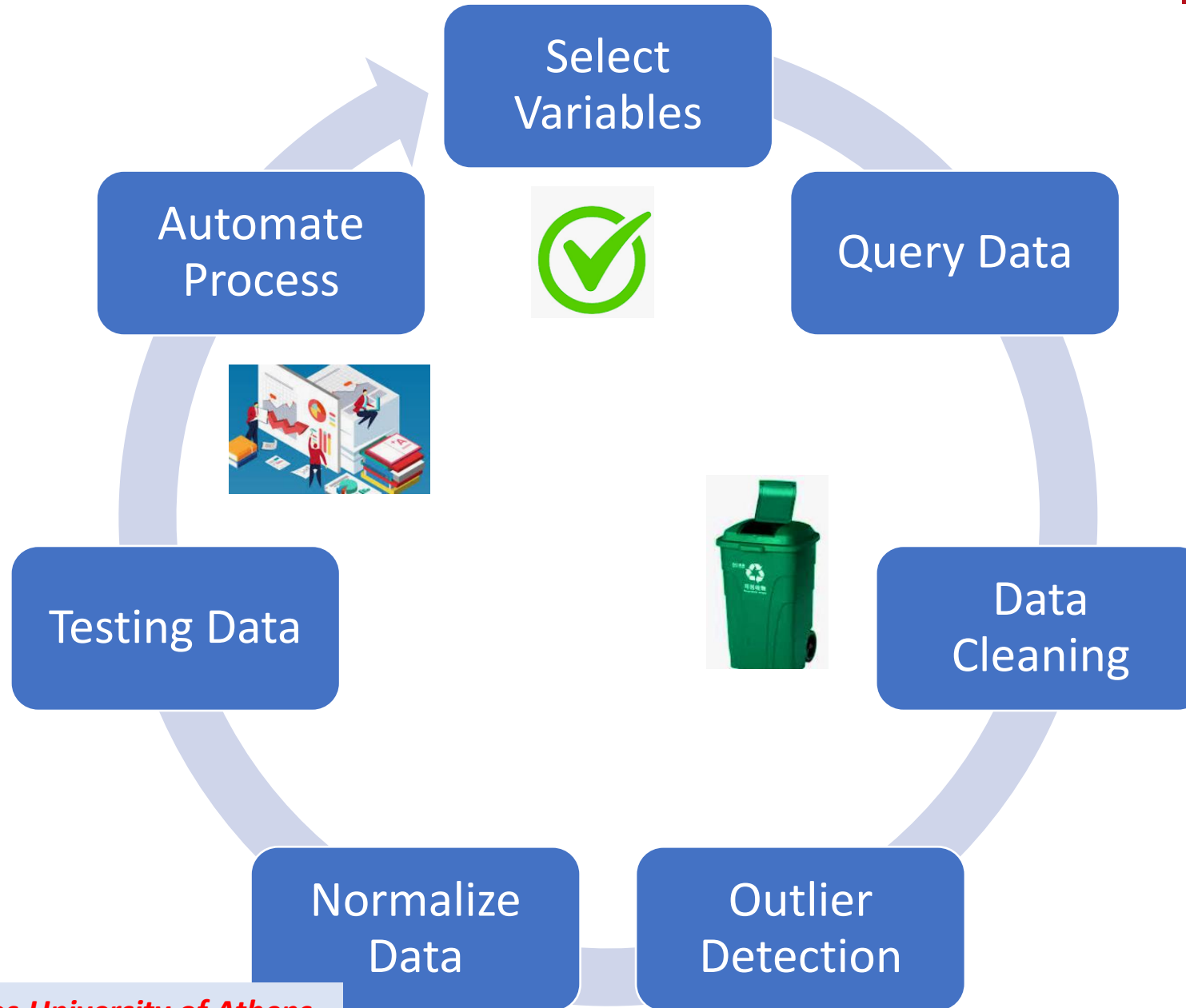
Priorities

From Big Data to Rational Decisions



**Real
World**



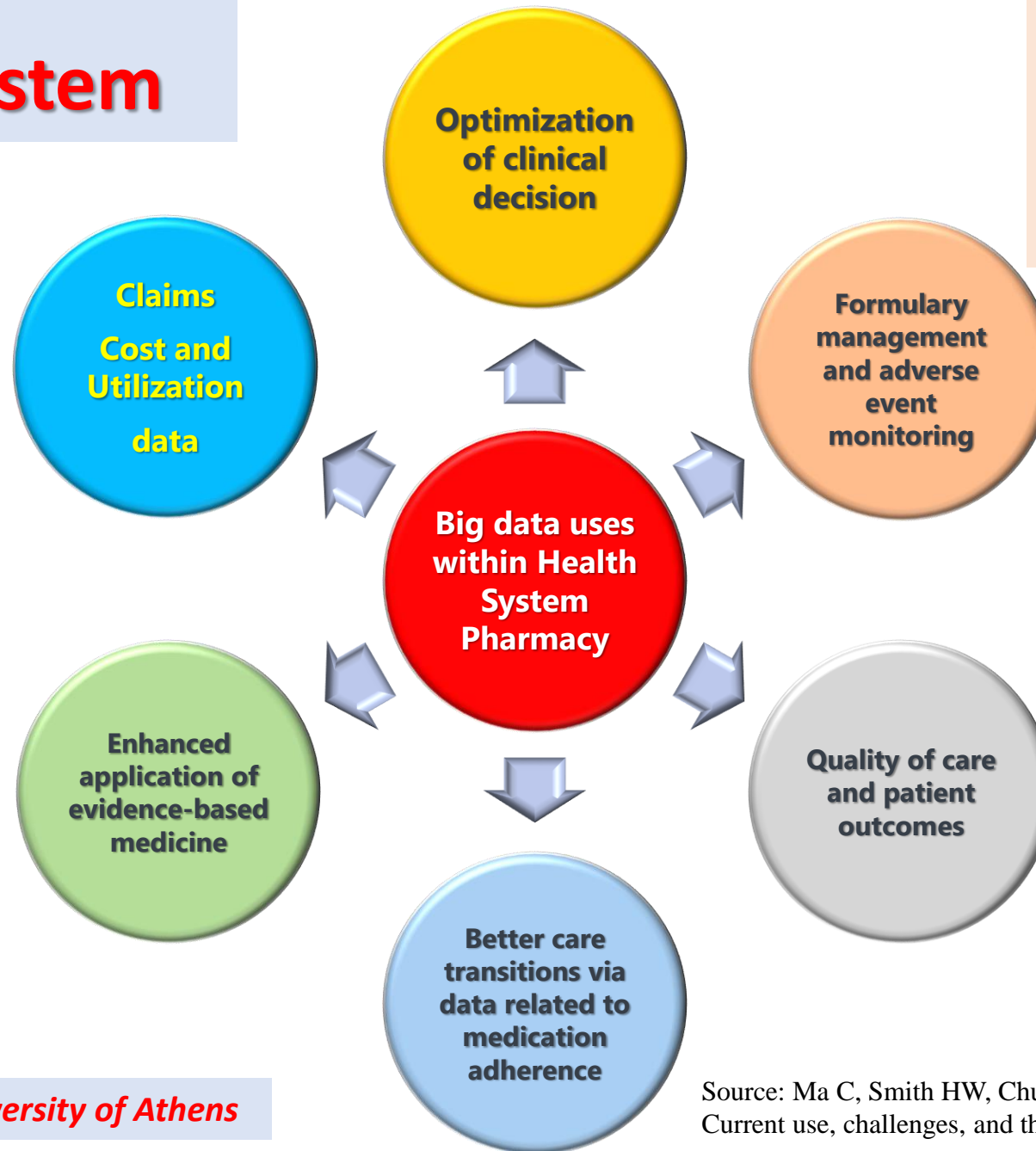


Areas of Collaboration

Big Data in a Pharmacy System

Use of Big data to Promote Health System

Pharmacy Operations & Management



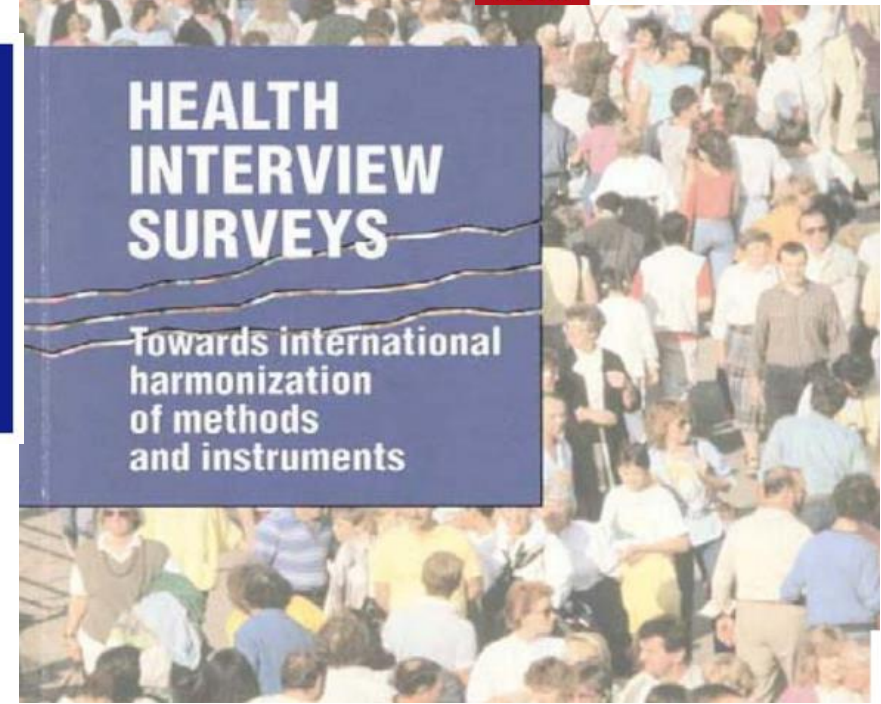
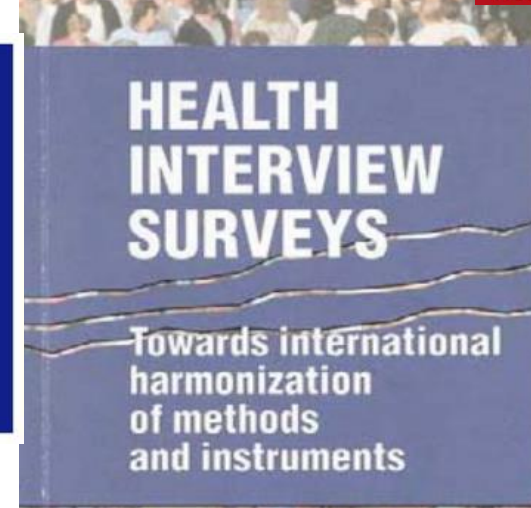
Big Data Sources

SHARE

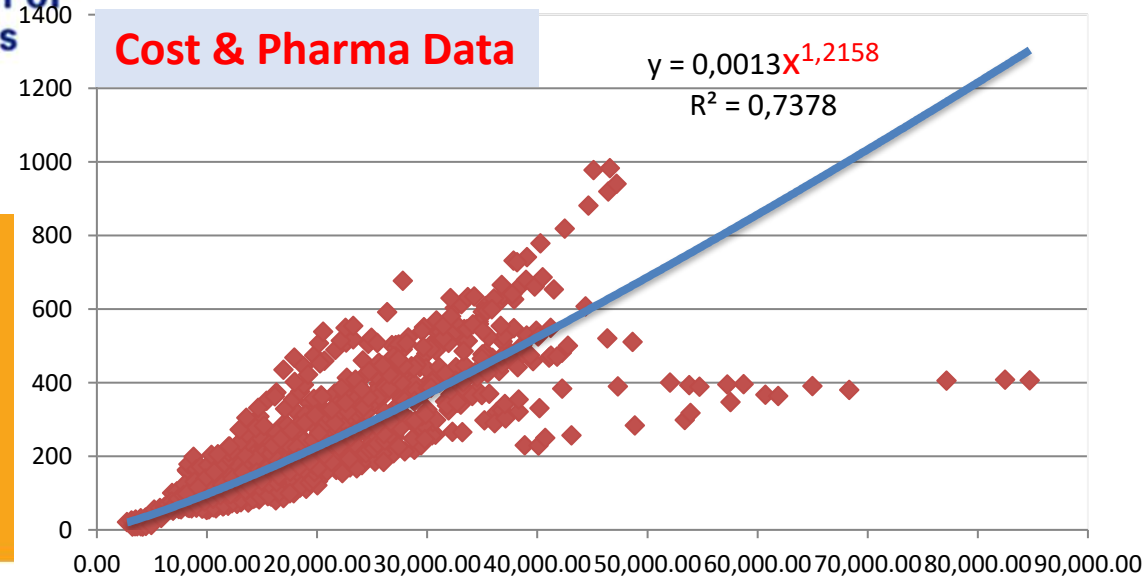
SURVEY OF HEALTH, AGEING

Overview of modules and sub-modules and their recommended order (**) is as follows:

Code	Name
EHSM	European Health Status Module
HS	Health Status - Minimum European Health Module
CD	Diseases and chronic conditions
AC	Accidents and injuries
AW	Absence from work (due to health problems)
PL	Functional limitations
PC	Personal care activities
HA	Household activities
PN	Pain
MH	Mental health
EHCM	European Health Care Module
HO	Use of inpatient and day care
AM	Use of ambulatory and home care
MD	Medicine use
PA	Preventive services
UN	Unmet needs for health care
EHDM	European Health Determinants Module
BM	Weight and height
PE	Physical activity / exercise
DH	Dietary habits
SK	Smoking
AL	Alcohol consumption
SS	Social support

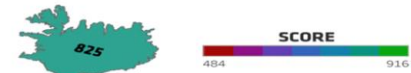


Cost & Pharma Data



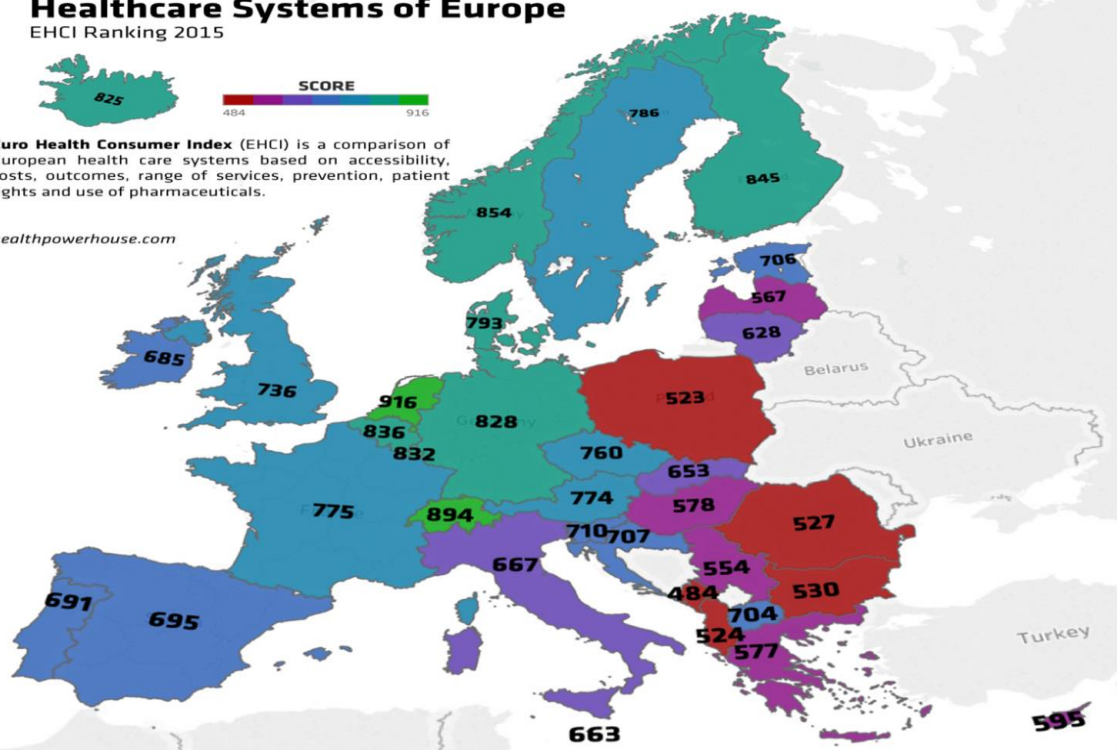
Healthcare Systems of Europe

EHCI Ranking 2015



Euro Health Consumer Index (EHCI) is a comparison of European health care systems based on accessibility, costs, outcomes, range of services, prevention, patient rights and use of pharmaceuticals.

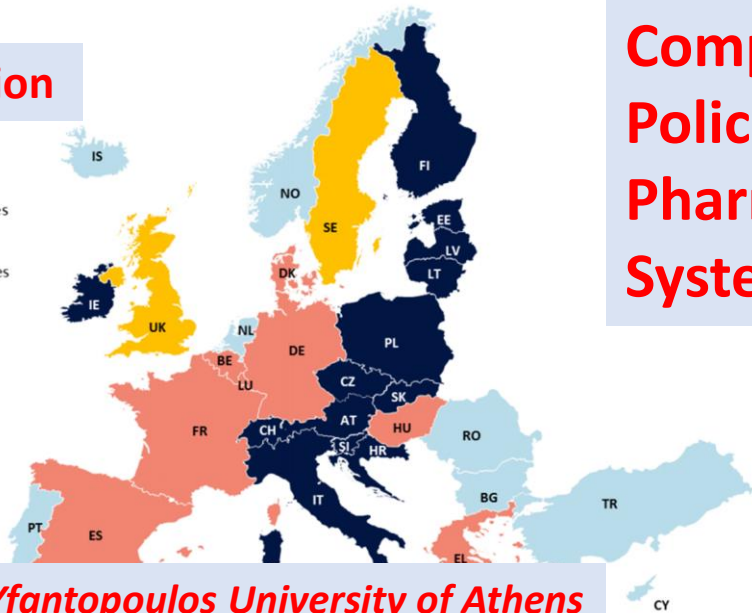
healthpowerhouse.com



Types of medicines regulated by EPR

E- Prescription

- Reimbursed medicines
- Prescription-only medicines
- Different types of medicines
- Not applicable

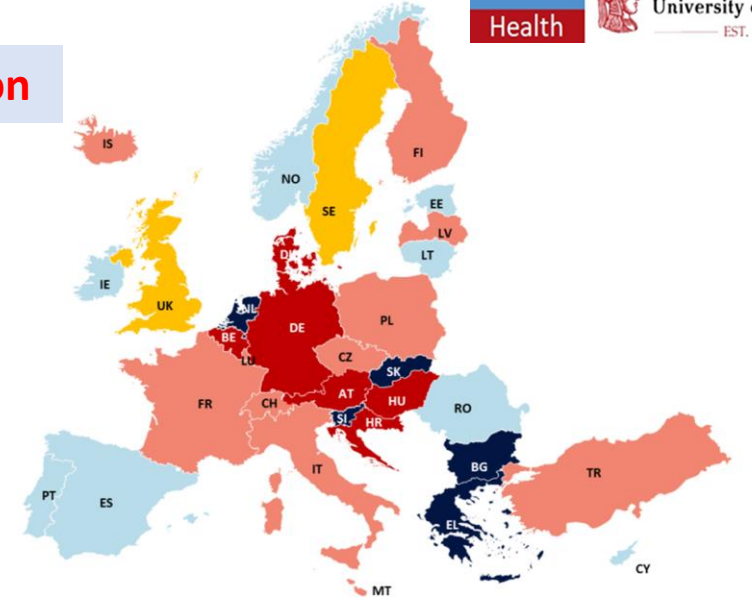


Comparative Policies on Pharmaceutical Systems

Regular revisions required by law in EPR

E-Regulation

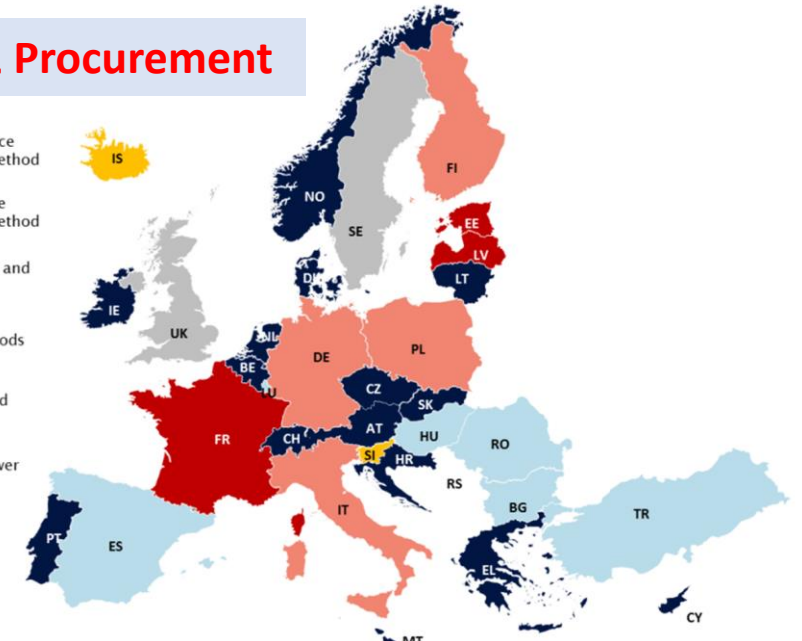
- Bi-annually
- Annually
- Other frequency
- No regular revision
- Not applicable



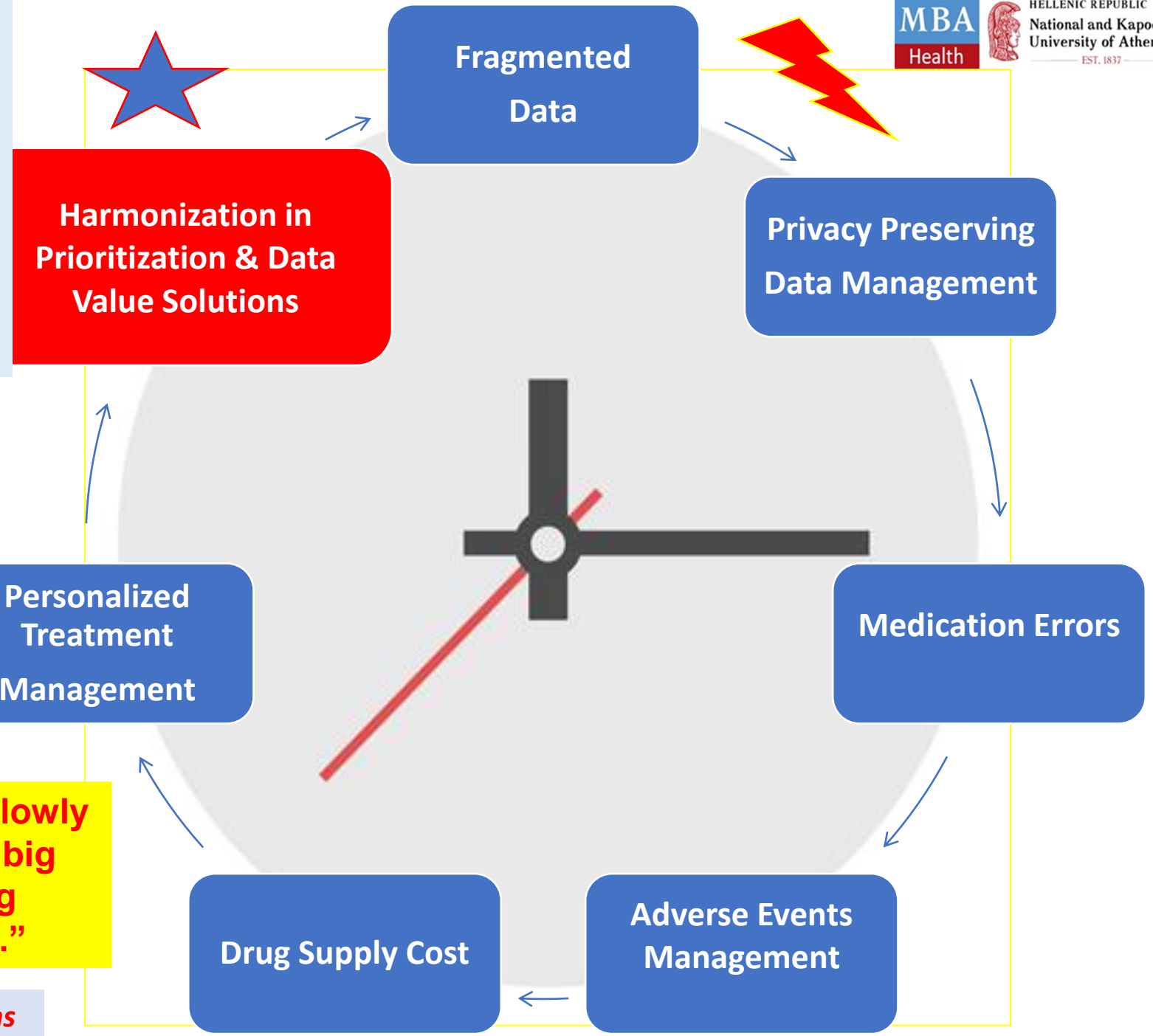
Calculation method of reference prices in EPR

Pricing & Procurement

- Average price of reference countries or modified method
- Lowest price of reference countries or modified method
- Elements of lowest price and average price method
- Special calculation methods
- Other calculation method
- Not applicable / no answer



Key Messages: Move Towards Data Driven Decisions



Thanks for your Attention
Email : yfantopoulos@gmail.com



“We are moving slowly into an era where big data is the starting point, not the end.”