

**ANNEX I**  
**SUMMARY OF PRODUCT CHARACTERISTICS**

▼ This medicinal product is subject to additional monitoring. This will allow quick identification of new safety information. Healthcare professionals are asked to report any suspected adverse reactions. See section 4.8 for how to report adverse reactions.

## **1. NAME OF THE MEDICINAL PRODUCT**

NUBEQA 300 mg film-coated tablets

## **2. QUALITATIVE AND QUANTITATIVE COMPOSITION**

Each film-coated tablet contains 300 mg of darolutamide.

### Excipient with known effect

Each film-coated tablet contains 186 mg of lactose monohydrate (see section 4.4).

For the full list of excipients, see section 6.1.

## **3. PHARMACEUTICAL FORM**

Film-coated tablet (tablet).

White to off-white, oval tablets with a length of 16 mm and a width of 8 mm, marked with “300” on one side, and “BAYER” on the other side.

## **4. CLINICAL PARTICULARS**

### **4.1 Therapeutic indications**

NUBEQA is indicated for the treatment of adult men with non-metastatic castration resistant prostate cancer (nmCRPC) who are at high risk of developing metastatic disease (see section 5.1).

### **4.2 Posology and method of administration**

Treatment should be initiated and supervised by a specialist physician experienced in treatment of prostate cancer.

#### Posology

The recommended dose is 600 mg darolutamide (two tablets of 300 mg) taken twice daily, equivalent to a total daily dose of 1200 mg (see section 5.2).

Medical castration with a luteinising hormone-releasing hormone (LHRH) analogue should be continued during treatment of patients not surgically castrated.

#### *Missed dose*

If a dose is missed, the dose should be taken as soon as the patient remembers prior to the next scheduled dose. The patient should not take two doses together to make up for a missed dose.

### *Dose modification*

If a patient experiences a  $\geq$  Grade 3 toxicity or an intolerable adverse reaction (see section 4.8), dosing should be withheld or reduced to 300 mg twice daily until symptoms improve. Treatment may then be resumed at a dose of 600 mg twice daily.

Dose reduction below 300 mg twice daily is not recommended, because efficacy has not been established.

### Special populations

#### *Elderly*

No dose adjustment is necessary in elderly patients (see section 5.2).

#### *Renal impairment*

No dose adjustment is necessary for patients with mild or moderate renal impairment.

For patients with severe renal impairment (eGFR 15-29 mL/min/1.73 m<sup>2</sup>) not receiving haemodialysis, the recommended starting dose is 300 mg twice daily (see sections 4.4 and 5.2).

#### *Hepatic impairment*

No dose adjustment is necessary for patients with mild hepatic impairment.

The available data on darolutamide pharmacokinetics in moderate hepatic impairment is limited.

Darolutamide has not been studied in patients with severe hepatic impairment.

For patients with moderate and severe hepatic impairment (Child-Pugh Classes B and C), the recommended starting dose is 300 mg twice daily (see sections 4.4 and 5.2).

#### *Paediatric population*

There is no relevant use of darolutamide in the paediatric population for the indication of treatment of nmCRPC.

### Method of administration

NUBEQA is for oral use.

The tablets should be taken whole with food (see section 5.2).

## **4.3 Contraindications**

Hypersensitivity to the active substance or to any of the excipients listed in section 6.1.

Women who are or may become pregnant (see section 4.6).

## **4.4 Special warnings and precautions for use**

### Renal impairment

The available data in patients with severe renal impairment are limited.

As exposure might be increased those patients should be closely monitored for adverse reactions (see sections 4.2 and 5.2).

### Hepatic impairment

The available data in patients with moderate hepatic impairment are limited, and darolutamide has not been studied in patients with severe hepatic impairment.

As exposure might be increased those patients should be closely monitored for adverse reactions (see sections 4.2 and 5.2).

### Recent cardiovascular disease

Patients with clinically significant cardiovascular disease in the past 6 months including stroke, myocardial infarction, severe/unstable angina pectoris, coronary/peripheral artery bypass graft, and symptomatic congestive heart failure were excluded from the clinical studies. Therefore, the safety of darolutamide in these patients has not been established.

If NUBEQA is prescribed, patients with clinically significant cardiovascular disease should be treated for these conditions according to established guidelines.

### Concomitant use with other medicinal products

Use of strong CYP3A4 and P-gp inducers during treatment with darolutamide may decrease the plasma concentration of darolutamide and is not recommended, unless there is no therapeutic alternative. Selection of an alternate concomitant medicinal product with less potential to induce CYP3A4 or P-gp should be considered (see section 4.5).

Patients should be monitored for adverse reactions of BCRP, OATP1B1 and OATP1B3 substrates as co-administration with darolutamide may increase the plasma concentrations of these substrates. Co-administration with rosuvastatin should be avoided unless there is no therapeutic alternative (see section 4.5).

### Androgen deprivation therapy may prolong the QT interval

In patients with a history of risk factors for QT prolongation and in patients receiving concomitant medicinal products that might prolong the QT interval (see section 4.5), physicians should assess the benefit-risk ratio including the potential for Torsade de pointes prior to initiating NUBEQA.

### Information about excipients

NUBEQA contains lactose. Patients with rare hereditary problems of galactose intolerance, total lactase deficiency or glucose-galactose malabsorption should not take this medicinal product.

## **4.5 Interaction with other medicinal products and other forms of interaction**

### Effects of other medicinal products on darolutamide

#### *CYP3A4 and P-gp inducers*

Darolutamide is a substrate of CYP3A4 and P-glycoprotein (P-gp).

Use of strong and moderate CYP3A4 inducers and P-gp inducers (e.g. carbamazepine, phenobarbital, St. John's Wort, phenytoin, and rifampicin) during treatment with darolutamide is not recommended, unless there is no therapeutic alternative. Selection of an alternate concomitant medicinal product, with no or weak potential to induce CYP3A4 or P-gp should be considered.

Repeated administration of rifampicin (600 mg), a strong CYP3A4 and a P-gp inducer, with a single dose of darolutamide (600 mg) together with food, resulted in a decrease of 72% in mean exposure ( $AUC_{0-72}$ ) and a decrease of 52% in  $C_{max}$  of darolutamide.

#### *CYP3A4, P-gp and BCRP inhibitors*

Darolutamide is a substrate of CYP3A4, P-gp and breast cancer resistance protein (BCRP).

No clinically relevant drug-drug interaction is expected in case of CYP3A4, P-gp or BCRP inhibitor administration. Darolutamide may be given concomitantly with CYP3A4, P-gp or BCRP inhibitors. Concomitant use of darolutamide with a combined P-gp and strong CYP3A4 inhibitor increases darolutamide exposure which may increase the risk of darolutamide adverse reactions. It is recommended to monitor patients more frequently for darolutamide adverse reactions and modify darolutamide dose as needed.

Administration of itraconazole (200 mg twice daily on day 1 and once daily on the following 7 days), a strong CYP3A4, P-gp and BCRP inhibitor, with a single dose of darolutamide (600 mg on day 5 together with food) resulted in a 1.7-fold increase in mean exposure ( $AUC_{0-72}$ ) and a 1.4-fold increase of  $C_{max}$  of darolutamide.

#### *UGT1A9 inhibitors*

Darolutamide is a substrate of UGT1A9.

No clinically relevant drug-drug interaction is expected in case of UGT1A9 inhibitor administration.

Darolutamide may be given concomitantly with UGT1A9 inhibitors.

A population pharmacokinetic analysis showed that co-administration of UGT1A9 inhibitors with darolutamide resulted in a 1.2-fold increase in exposure ( $AUC_{0-72}$ ) of darolutamide.

#### Effects of darolutamide on other medicinal products

##### *BCRP, OATP1B1 and OATP1B3 substrates*

Darolutamide is an inhibitor of breast cancer resistance protein (BCRP) and Organic Anion Transporting Polypeptides (OATP) 1B1 and 1B3.

Co-administration of rosuvastatin should be avoided unless there is no therapeutic alternative.

Selection of an alternative concomitant medicinal product with less potential to inhibit BCRP, OATP1B1 and OATP1B3 should be considered.

Administration of darolutamide (600 mg twice daily for 5 days) prior to co-administration of a single dose of rosuvastatin (5 mg) together with food resulted in approximately 5-fold increase in mean exposure (AUC) and  $C_{max}$  of rosuvastatin.

Co-administration of darolutamide with other BCRP substrates should be avoided where possible.

Co-administration of darolutamide may increase the plasma concentrations of other concomitant BCRP, OATP1B1 and OATP1B3 substrates (e.g. methotrexate, sulfasalazine, fluvastatin, atorvastatin, pitavastatin). Therefore, it is recommended to monitor patients for adverse reactions of BCRP, OATP1B1 and OATP1B3 substrates. In addition, the related recommendation in the product information of these substrates should be followed when co-administered with darolutamide.

##### *P-gp substrates*

No clinically relevant drug-drug interaction is expected in case of P-gp substrate administration.

Darolutamide may be given concomitantly with P-gp substrates (e.g. digoxin, verapamil or nifedipine). Co-administration of darolutamide together with the sensitive P-gp substrate dabigatran etexilate did not reveal any increase in exposure (AUC and  $C_{max}$ ) of dabigatran.

##### *CYP3A4 substrates*

Darolutamide is a mild inducer of CYP3A4.

No clinically relevant drug-drug interaction is expected in case of CYP substrate administration.

Darolutamide may be given concomitantly with CYP substrates (e.g. warfarin, L-thyroxine, omeprazole).

Administration of darolutamide (600 mg twice daily for 9 days) prior to co-administration of a single dose of the sensitive CYP3A4 substrate midazolam (1 mg) together with food, decreased the mean exposure (AUC) and  $C_{max}$  of midazolam by 29% and 32%, respectively.

Darolutamide did not inhibit the metabolism of selected CYP substrates *in vitro* at clinically relevant concentrations.

##### *Medicinal products that prolong the QT interval*

Since androgen deprivation treatment may prolong the QT interval, the co-administration with medicinal products known to prolong the QT interval or medicinal products able to induce Torsade de pointes should be carefully evaluated. These include medicinal products such as class IA (e.g., quinidine, disopyramide) or class III (e.g., amiodarone, sotalol, dofetilide, ibutilide) antiarrhythmic medicinal products, methadone, moxifloxacin, and antipsychotics (e.g. haloperidol).

#### **4.6 Fertility, pregnancy and lactation**

This medicinal product is not indicated in women of childbearing potential. It is not to be used in women who are, or may be, pregnant or breast-feeding (see sections 4.1 and 4.3).

##### Women of childbearing potential / contraception in males and females

It is not known whether darolutamide or its metabolites are present in semen. If the patient is engaged in sexual activity with a woman of childbearing potential, a highly effective contraceptive method (<1% failure rate per year) should be used during and for 1 week after completion of treatment with NUBEQA to prevent pregnancy.

##### Pregnancy

Based on its mechanism of action, darolutamide may cause foetal harm. No non-clinical reproductive toxicity studies have been conducted (see section 5.3).

It is not known whether darolutamide or its metabolites are present in semen. If the patient is engaged in sexual activity with a pregnant woman, a condom should be used during and for 1 week after completion of treatment with NUBEQA. Exposure of the foetus to an androgen receptor inhibitor through seminal transfer to the pregnant woman has to be avoided, as this could affect development of the foetus.

##### Breast-feeding

It is unknown whether darolutamide or its metabolites are excreted in human milk. No studies in animals have been conducted to evaluate the excretion of darolutamide or its metabolites into milk (see section 5.3). A risk to the breast-fed child cannot be excluded.

##### Fertility

There are no human data on the effect of darolutamide on fertility.

Based on animal studies, NUBEQA may impair fertility in males of reproductive potential (see section 5.3).

#### **4.7 Effects on ability to drive and use machines**

NUBEQA has no or negligible influence on the ability to drive and use machines.

#### **4.8 Undesirable effects**

##### Summary of the safety profile

The most frequently observed adverse reaction is fatigue/asthenic conditions (15.8%).

##### Tabulated list of adverse reactions

The adverse reactions observed are listed in Table 1 below. They are classified according to System Organ Class.

Adverse reactions are grouped according to their frequencies. Frequency groups are defined by the following convention: very common ( $\geq 1/10$ ); common ( $\geq 1/100$  to  $< 1/10$ ); uncommon ( $\geq 1/1,000$  to  $< 1/100$ ); rare ( $\geq 1/10,000$  to  $< 1/1,000$ ); very rare ( $< 1/10,000$ ); not known (cannot be estimated from the available data).

Within each frequency group, adverse reactions are presented in order of decreasing seriousness.

**Table 1: Adverse reactions reported in the ARAMIS study**

System organ class (MedDRA)	Very common	Common
Cardiac disorders		Ischaemic heart disease <sup>b</sup> Heart failure <sup>c</sup>
Skin and subcutaneous tissue disorders		Rash
Musculoskeletal and connective tissue disorders		Pain in extremity Musculoskeletal pain Fractures
General disorders and administration site conditions	Fatigue/asthenic conditions <sup>a</sup>	
Investigations <sup>d</sup>	Neutrophil count decreased Bilirubin increased AST increased	

<sup>a</sup> Includes fatigue and asthenia, lethargy and malaise.

<sup>b</sup> Includes arteriosclerosis coronary artery, coronary artery disease, coronary artery occlusion, coronary artery stenosis, acute coronary syndrome, acute myocardial infarction, angina pectoris, angina unstable, myocardial infarction, myocardial ischaemia.

<sup>c</sup> Includes cardiac failure, cardiac failure acute, cardiac failure chronic, cardiac failure congestive, cardiogenic shock.

<sup>d</sup> Common Terminology Criteria for Adverse Events (CTCAE) version 4.03.

### Description of selected adverse reactions

#### *Fatigue*

Fatigue/asthenic conditions were reported in 15.8% of patients treated with darolutamide and in 11.4% of patients treated with placebo. Events with worst grade of 3 were reported in 0.6% of patients treated with darolutamide and in 1.1% of patients treated with placebo. Fatigue (not including asthenia, lethargy or malaise) occurred in the majority of patients (12.1% of patients treated with darolutamide and 8.7% of patients treated with placebo).

#### *Fractures*

Fractures occurred in 4.2% of patients treated with darolutamide and in 3.6% of patients treated with placebo.

#### *Ischaemic heart disease and heart failure*

Ischaemic heart disease occurred in 3.2% of patients treated with darolutamide and in 2.5% of patients treated with placebo. Grade 5 events occurred in 0.3% of patients treated with darolutamide and 0.2% of patients treated with placebo. Heart failure occurred in 1.9% of patients treated with darolutamide and in 0.9% of patients treated with placebo.

#### *Neutrophil count decreased*

Neutrophil count decreased was reported as a laboratory abnormality in 19.6% of patients treated with darolutamide and in 9.4% of patients treated with placebo. The median time to nadir was 256 days. The laboratory tests abnormalities manifested predominantly as grade 1 or 2 intensity. Neutrophil count decreased of grade 3 and 4 was reported in 3.5% and 0.5% of patients, respectively. Only one patient permanently discontinued darolutamide due to neutropenia. Neutropenia was either transient or reversible (88% of patients) and were not associated with any clinically relevant signs or symptoms.

### *Bilirubin increased*

Bilirubin increased was reported as a laboratory abnormality in 16.4% of patients treated with darolutamide and in 6.9% of patients treated with placebo. The episodes were predominantly of grade 1 or 2 intensity, not associated with any clinically relevant signs or symptoms, and reversible after darolutamide was discontinued. Bilirubin increased of grade 3 was reported in 0.1% of patients treated with darolutamide and in 0% of patients treated with placebo. In the darolutamide arm, the mean time to first onset of increased bilirubin was 153 days, and the mean duration of the first episode was 182 days. No patients were discontinued from treatment due to increase in bilirubin.

### *AST increased*

AST increased was reported as a laboratory abnormality in 22.5% of patients treated with darolutamide and in 13.6% of patients treated with placebo. The episodes were predominantly of grade 1 or 2 intensity, not associated with any clinically relevant signs or symptoms, and reversible after darolutamide was discontinued. AST increased of grade 3 was reported in 0.5% of patients treated with darolutamide and in 0.2% of patients treated with placebo. In the darolutamide arm, the mean time to first onset of increased AST was 258 days, and the mean duration of the first episode was 118 days. No patients were discontinued from treatment due to increase in AST.

### Reporting of suspected adverse reactions

Reporting suspected adverse reactions after authorisation of the medicinal product is important. It allows continued monitoring of the benefit/risk balance of the medicinal product. Healthcare professionals are asked to report any suspected adverse reactions via the national reporting system listed in [Appendix V](#).

## **4.9 Overdose**

The highest dose of darolutamide studied clinically was 900 mg twice daily, equivalent to a total daily dose of 1800 mg. No dose limiting toxicities were observed with this dose.

Considering the saturable absorption (see section 5.2) and the absence of evidence for acute toxicity, an intake of a higher than recommended dose of darolutamide is not expected to lead to toxicity.

In the event of intake of a higher than recommended dose, treatment with darolutamide can be continued with the next dose as scheduled.

There is no specific antidote for darolutamide and symptoms of overdose are not established.

## **5. PHARMACOLOGICAL PROPERTIES**

### **5.1 Pharmacodynamic properties**

Pharmacotherapeutic group: Endocrine therapy, anti-androgens; ATC code: L02BB06

#### Mechanism of action

Darolutamide is an androgen receptor (AR) inhibitor with a flexible polar-substituted pyrazole structure that binds with high affinity directly to the receptor ligand binding domain.

Darolutamide competitively inhibits androgen binding, AR nuclear translocation, and AR mediated transcription. A major metabolite, keto-darolutamide, exhibited similar *in vitro* activity to darolutamide. Darolutamide treatment decreases prostate tumour cell proliferation leading to potent antitumour activity.

#### Pharmacodynamic effects

No prolongation of the mean QTcF interval (i.e., greater than 10 ms) was observed after oral administration of 600 mg darolutamide twice daily compared to placebo.



## Clinical efficacy and safety

The efficacy and safety of darolutamide was assessed in a randomised, double-blind, placebo-controlled multicentre phase III study (ARAMIS) in patients with non-metastatic (as assessed by conventional imaging CT, bone scan, MRI) castration resistant prostate cancer with a prostate-specific antigen doubling time (PSADT) of  $\leq 10$  months.

Patients were included in the trial if they had 3 rising prostate-specific antigen (PSA) levels after the nadir taken at least 1 week apart during androgen deprivation therapy, PSA  $\geq 2$  ng/mL at screening and castrate level of serum testosterone  $< 1.7$  nmol/L.

Patients with a medical history of seizure were allowed to enter the study. There were 12 patients (0.21%) enrolled on the darolutamide arm with a history of seizure.

Patients with uncontrolled hypertension or recent (in the past 6 months) stroke, myocardial infarction, severe/unstable angina pectoris, coronary/peripheral artery bypass graft, congestive heart failure New York Heart Association (NYHA) Class III or IV were excluded from the study.

Patients with prior treatment with second generation AR inhibitors such as enzalutamide, apalutamide and darolutamide, or CYP17 enzyme inhibitors such as abiraterone acetate as well as patients receiving systemic corticosteroid with dose greater than the equivalent 10 mg of prednisone/day within 28 days before randomisation were excluded from the study.

In total, 1509 patients were randomized 2:1 to receive either 600 mg darolutamide orally twice daily (n=955) or matching placebo (n=554).

All patients received a gonadotropin-releasing hormone (GnRH) analogue concurrently or had a bilateral orchiectomy. Patients with presence of pelvic lymph nodes  $< 2$  cm in short axis below the aortic bifurcation were allowed to enter the study. Absence or presence of metastasis was assessed by independent central radiological review. Included in these analyses were 89 patients that were retrospectively identified with metastasis at baseline. Randomization was stratified by PSADT ( $\leq 6$  months or  $> 6$  months) and use of osteoclast-targeted therapy at study entry (yes or no).

The following patient demographics and disease characteristics were balanced between treatment arms. The median age was 74 years (range 48-95) and 9% of patients were 85 years of age or older. The racial distribution was 79% White, 13% Asian, and 3% Black. A majority of patients had a Gleason score of 7 or higher at diagnosis (73%). The median PSADT was 4.5 months. Nine percent (9%) of patients had prior orchiectomy, 25% of patients had prior prostatectomy and 50% of patients had at least one prior radiotherapy. Seventy-six percent (76%) of patients received more than one prior anti-hormonal treatment. Patients had an Eastern Cooperative Oncology Group Performance Status (ECOG PS) score of 0 (69%) or 1 (31%) at study entry.

Treatment with darolutamide continued until radiographic disease progression as assessed by conventional imaging (CT, bone scan, MRI) by blinded central review, unacceptable toxicity or withdrawal.

The primary efficacy endpoint was metastasis free survival (MFS). Secondary endpoints were overall survival (OS), time to pain progression, time to initiation of first cytotoxic chemotherapy for prostate cancer, and time to first symptomatic skeletal events (defined as occurrence of any of the following: external beam radiotherapy to relieve skeletal symptoms, new symptomatic pathologic bone fracture, spinal cord compression, or tumour-related orthopaedic surgical intervention).

Treatment with darolutamide resulted in an improvement in MFS compared to placebo (see Table 2 and Figure 1).

MFS results were consistent across patient subgroups regardless of PSADT, prior use of bone-targeting agents or loco-regional disease. Additional subgroups with consistent MFS results included PSA at baseline, Gleason score at diagnosis, age, geographical region, ECOG PS at baseline, race, and number of prior hormonal therapies.

After the primary analysis of MFS, once the study was unblinded, patients receiving placebo were offered treatment with open-label darolutamide (cross-over option). Among the 554 patients randomised to placebo, 170 (31%) crossed over to receive darolutamide treatment. The OS analysis was not adjusted for confounding effects of cross-over.

At the time of the final analysis, treatment with darolutamide resulted in a statistically significant improvement in overall survival compared to placebo (median was not reached in either arm, see Table 2 and Figure 2).

Treatment with darolutamide also resulted in statistically significant delays in time to pain progression, time to initiation of first cytotoxic chemotherapy and time to first symptomatic skeletal event compared to placebo (see Table 2).

All analyses were performed in the full analysis set.

**Table 2: Efficacy results from the ARAMIS study**

Efficacy parameter	Number of events (%)		Median (95% CI)		Hazard Ratio <sup>b</sup> (95% Confidence Interval [CI]) p-value (two-sided)
	Darolutamide (n=955)	Placebo <sup>a</sup> (n=554)	Darolutamide (n=955)	Placebo <sup>a</sup> (n=554)	
Metastasis free survival <sup>c</sup>	221 (23.1%)	216 (39.0%)	40.4 months (34.3, NR)	18.4 months (15.5, 22.3)	0.413 (0.341, 0.500) <0.000001
Overall survival	148 (15.5%)	106 (19.1%)	NR (56.1, NR)	NR (46.9, NR)	0.685 (0.533, 0.881) 0.003048
Time to pain progression <sup>c, d</sup>	251 (26.3%)	178 (32.1%)	40.3 months (33.2, 41.2)	25.4 months (19.1, 29.6)	0.647 (0.533, 0.785) 0.000008
Time to initiation of first cytotoxic chemotherapy	127 (13.3%)	98 (17.7%)	NR (NR, NR)	NR (NR, NR)	0.579 (0.444, 0.755) 0.000044
Time to first symptomatic skeletal event	29 (3.0%)	28 (5.1%)	NR (NR, NR)	NR (NR, NR)	0.484 (0.287, 0.815) 0.005294

<sup>a</sup> including 170 patients who crossed over to open-label darolutamide

<sup>b</sup> Hazard ratio < 1 favours darolutamide

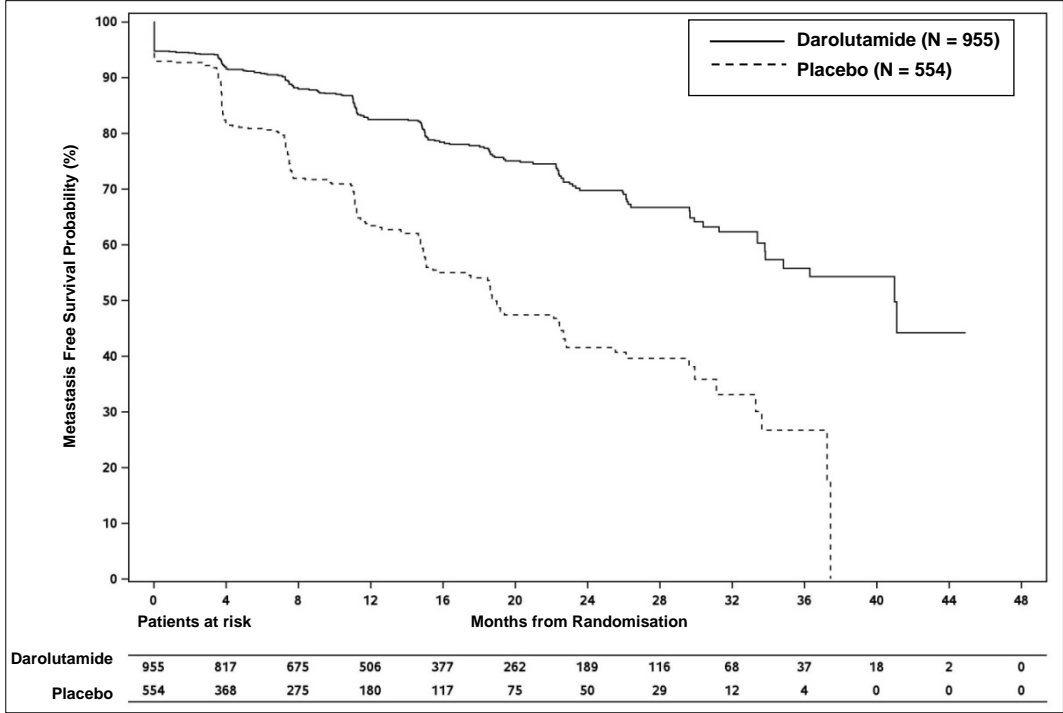
<sup>c</sup> for MFS and time to pain progression, the analysis performed at the time of primary completion is considered as the final analysis

<sup>d</sup> Patient reported outcome as evaluated by Brief Pain Inventory-Short Form questionnaire

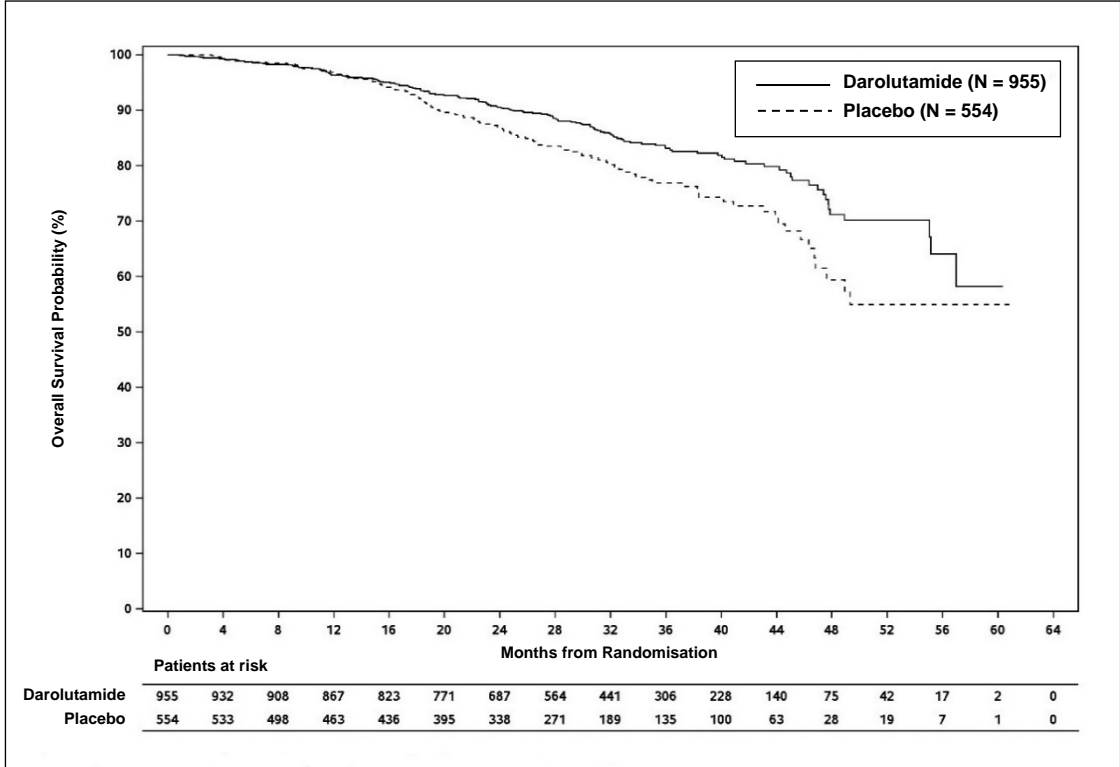
NR: Not reached.

Treatment with darolutamide resulted in a longer progression free survival (PFS, median 36.8 vs 14.8 months, HR=0.380, nominal p<0.000001) and time to PSA progression (median 29.5 vs 7.2 months, HR=0.164, nominal p<0.000001). Consistency of effect was observed across all measures of survival (MFS, OS and PFS).

**Figure 1: Kaplan-Meier curves of metastasis free survival**



**Figure 2: Kaplan-Meier curves of overall survival**



Patients receiving darolutamide in the ARAMIS study (double-blind period) demonstrated a significantly higher confirmed PSA response rate (defined as a  $\geq 50\%$  reduction from baseline), compared with patients receiving placebo, 84.0% vs 7.9% (difference = 76.1%,  $p < 0.000001$  (nominal p-value, for information only)).

## Paediatric population

The European Medicines Agency has waived the obligation to submit the results of studies with darolutamide in all subsets of the paediatric population in prostate malignant neoplasms (see section 4.2 for information on paediatric use).

## **5.2 Pharmacokinetic properties**

### General introduction

Darolutamide consists of two diastereomers [(*S,R*)-darolutamide and (*S,S*)-darolutamide] which interconvert via the main circulating metabolite called keto-darolutamide. *In vitro*, all three substances show similar pharmacological activity. Darolutamide is poorly soluble in aqueous solvents over a large pH range and generally more soluble in organic solvents.

### Absorption

Following oral administration of 600 mg (2 tablets of 300 mg), peak plasma concentrations of darolutamide of 4.79 mg/L (coefficient of variation: 30.9%) are usually reached around 4 hours after administration. The ratio of the two diastereomers, (*S,R*)-darolutamide to (*S,S*)-darolutamide, changed from a 1:1 ratio in the tablet to an approximately 1:9 ratio in plasma based on AUC<sub>0-12</sub> data at steady-state. Following oral administration together with food, steady-state is reached after 2-5 days of repeated twice-daily dosing.

The absolute bioavailability compared to an intravenous injection is approximately 30% following oral administration of a NUBEQA tablet containing 300 mg darolutamide under fasted conditions. Bioavailability of darolutamide was enhanced by 2.0- to 2.5-fold when administered with food. A similar increase of exposure was observed for the major metabolite keto-darolutamide.

### Distribution

The apparent volume of distribution of darolutamide after intravenous administration is 119 L indicating that darolutamide is widely distributed throughout the body to both intracellular and extracellular fluid spaces.

Darolutamide is moderately (92%) bound to human plasma proteins without any difference between the two diastereomers. The major metabolite of darolutamide, keto-darolutamide, is highly (99.8%) bound to plasma proteins.

Passage of darolutamide across the blood-brain barrier has not been studied clinically. However, brain exposures to darolutamide in terms of AUC<sub>0-24</sub> are very low with 4.5% of plasma exposure after single dose in rats and 1.9-3.9% after repeated dose in mice. This indicates low passage of darolutamide across the intact blood-brain barrier in rats and mice and a low likelihood that darolutamide crosses the intact blood-brain barrier in humans to a clinically relevant extent.

### Biotransformation

The diastereomers (*S,R*)-darolutamide and (*S,S*)-darolutamide are able to interconvert via the metabolite keto-darolutamide with a preference for (*S,S*)-darolutamide.

Following single oral administration of 300 mg <sup>14</sup>C-darolutamide given as an oral solution, keto-darolutamide is the only major metabolite with about 2-fold higher total exposure in plasma compared to darolutamide. Darolutamide and keto-darolutamide accounted together for 87.4% of the <sup>14</sup>C-radioactivity in plasma indicating that all other metabolites are of minor importance.

Darolutamide is metabolised primarily by oxidative metabolism mediated mainly by CYP3A4, as well as by direct glucuronidation mediated preferentially by UGT1A9 and UGT1A1. In addition, mainly the AKR1C isoforms were shown to catalyse the reduction of keto-darolutamide to the substance diastereomers.

## Elimination

The effective half-life of darolutamide and keto-darolutamide in plasma of patients is approximately 20 hours. Of the two diastereomers comprising darolutamide, (*S,R*)-darolutamide has a shorter effective half-life of 9 hours compared to (*S,S*)-darolutamide with an effective half-life of 22 hours. The clearance of darolutamide following intravenous administration was 116 mL/min (CV: 39.7%). A total of 63.4% of substance-related material is excreted in the urine (approximately 7% unchanged), 32.4% is excreted in the faeces. More than 95% of the dose was recovered within 7 days after administration.

## Linearity / Non-linearity

In the dose range of 100 to 700 mg (after single dose and at steady state), the exposure to the two diastereomers and the major metabolite keto-darolutamide increases linearly in a nearly dose-related manner. Based on a saturated absorption, no further increase in exposure to darolutamide was observed at 900 mg twice daily.

## Special populations

### *Elderly*

No clinically relevant differences in the pharmacokinetics of darolutamide were observed (65-95 years).

### *Renal impairment*

In a clinical pharmacokinetic study, AUC and  $C_{\max}$  for darolutamide were 2.5 and 1.6-fold higher in patients with severe renal impairment (estimated Glomerular Filtration Rate [eGFR] 15 to 29 mL/min/1.73 m<sup>2</sup>) compared to healthy volunteers.

A population pharmacokinetic analysis indicates a 1.1-, 1.3- and an approximately 1.5-fold higher exposure (AUC) of darolutamide in patients with mild, moderate and severe renal impairment (eGFR 15 to 89 mL/min/1.73 m<sup>2</sup>) compared to patients with normal renal function.

The pharmacokinetics of darolutamide has not been studied in patients with end-stage renal disease receiving dialysis (eGFR < 15 mL/min/1.73 m<sup>2</sup>).

### *Hepatic impairment*

In a clinical pharmacokinetic study,  $C_{\max}$  and AUC for darolutamide were 1.5 and 1.9-fold higher in patients with moderate hepatic impairment (Child-Pugh B) compared to healthy volunteers. There are no data for patients with severe hepatic impairment (Child-Pugh C).

### *Ethnic differences*

No clinically relevant differences in the pharmacokinetics of darolutamide were observed based on ethnicity (White, Japanese, non-Japanese Asian, Black or African American). A population pharmacokinetic analysis indicated a 1.4-fold increase in exposure (AUC) in Japanese patients compared to patients from all other regions.

### 5.3 Preclinical safety data

#### Systemic toxicity

In repeated dose toxicity studies in rats and dogs, the main findings were changes in the male reproductive organs (decreases in organ weight with atrophy of the prostate and epididymides). These effects occurred at systemic exposures in the range of or below the anticipated human exposure (based on AUC comparison). Additional changes to reproductive tissues included minimal increase in vacuolation of the pituitary gland, atrophy and secretory reduction in seminal vesicles and mammary glands in rats as well as testicular hypospermia, seminiferous tubule dilatation and degeneration in dogs. Changes in the male reproductive organs in both species were consistent with the pharmacological activity of darolutamide and reversed or partially resolved after 4- to 8-week recovery periods.

#### Embryotoxicity / teratogenicity

Studies on developmental toxicity have not been performed.

#### Reproduction toxicity

Studies on reproductive toxicity have not been performed. However, male fertility is likely to be impaired based on the findings in repeat-dose toxicity studies in rats and dogs, which are consistent with the pharmacological activity of darolutamide.

#### Genotoxicity and carcinogenicity

Darolutamide did not induce mutations in the microbial mutagenesis (Ames) assay. At high concentrations, darolutamide did induce structural chromosome aberrations *in vitro* in cultured human lymphocytes. However, in the *in vivo* combined bone marrow micronucleus test and the Comet assay in the liver and duodenum of the rat, no genotoxicity was observed at exposures in excess of the maximum human exposure. Long-term animal studies to evaluate the carcinogenic potential of darolutamide have not been conducted.

#### Safety pharmacology

*In vitro*, darolutamide weakly inhibited the hERG potassium current and the L-type calcium channel. *In vivo*, in anaesthetised dogs, darolutamide slightly decreased the QT interval duration, but this effect was not found in conscious dogs.

## 6. PHARMACEUTICAL PARTICULARS

### 6.1 List of excipients

#### Tablet core

Calcium hydrogen phosphate (E 341)  
Croscarmellose sodium  
Lactose monohydrate  
Magnesium stearate (E 470b)  
Povidone (E 1201)

#### Film-coating

Hypromellose  
Lactose monohydrate  
Macrogol (E 1521)  
Titanium dioxide (E 171)

## **6.2 Incompatibilities**

Not applicable.

## **6.3 Shelf life**

3 years

## **6.4 Special precautions for storage**

This medicinal product does not require any special storage conditions.

## **6.5 Nature and contents of container**

PVC/Aluminium foil blisters containing 16 film-coated tablets.  
Each pack contains 96 or 112 film-coated tablets.

Not all pack sizes may be marketed.

## **6.6 Special precautions for disposal**

Any unused medicinal product or waste material should be disposed of in accordance with local requirements.

## **7. MARKETING AUTHORISATION HOLDER**

Bayer AG  
51368 Leverkusen  
Germany

## **8. MARKETING AUTHORISATION NUMBER(S)**

EU/1/20/1432/001	112 film-coated tablets
EU/1/20/1432/002	96 film-coated tablets

## **9. DATE OF FIRST AUTHORISATION/RENEWAL OF THE AUTHORISATION**

Date of first authorisation: 27 March 2020

## **10. DATE OF REVISION OF THE TEXT**

Detailed information on this medicinal product is available on the website of the European Medicines Agency <http://www.ema.europa.eu>.

**ANNEX II**

- A. MANUFACTURER RESPONSIBLE FOR BATCH RELEASE**
- B. CONDITIONS OR RESTRICTIONS REGARDING SUPPLY AND USE**
- C. OTHER CONDITIONS AND REQUIREMENTS OF THE MARKETING AUTHORISATION**
- D. CONDITIONS OR RESTRICTIONS WITH REGARD TO THE SAFE AND EFFECTIVE USE OF THE MEDICINAL PRODUCT**



## **A. MANUFACTURER RESPONSIBLE FOR BATCH RELEASE**

Name and address of the manufacturer responsible for batch release

Orion Corporation, Orion Pharma  
24100 Salo  
Finland

## **B. CONDITIONS OR RESTRICTIONS REGARDING SUPPLY AND USE**

Medicinal product subject to restricted medical prescription (see Annex I: Summary of Product Characteristics, section 4.2).

## **C. OTHER CONDITIONS AND REQUIREMENTS OF THE MARKETING AUTHORISATION**

- **Periodic safety update reports (PSURs)**

The requirements for submission of PSURs for this medicinal product are set out in the list of Union reference dates (EURD list) provided for under Article 107c(7) of Directive 2001/83/EC and any subsequent updates published on the European medicines web-portal.

The marketing authorisation holder (MAH) shall submit the first PSUR for this product within 6 months following authorisation.

## **D. CONDITIONS OR RESTRICTIONS WITH REGARD TO THE SAFE AND EFFECTIVE USE OF THE MEDICINAL PRODUCT**

- **Risk management plan (RMP)**

The marketing authorisation holder (MAH) shall perform the required pharmacovigilance activities and interventions detailed in the agreed RMP presented in Module 1.8.2 of the marketing authorisation and any agreed subsequent updates of the RMP.

An updated RMP should be submitted:

- At the request of the European Medicines Agency;
- Whenever the risk management system is modified, especially as the result of new information being received that may lead to a significant change to the benefit/risk profile or as the result of an important (pharmacovigilance or risk minimisation) milestone being reached.

**ANNEX III**  
**LABELLING AND PACKAGE LEAFLET**

## **A. LABELLING**

**PARTICULARS TO APPEAR ON THE OUTER PACKAGING**

**OUTER CARTON**

**1. NAME OF THE MEDICINAL PRODUCT**

NUBEQA 300 mg film-coated tablets  
darolutamide

**2. STATEMENT OF ACTIVE SUBSTANCE**

Each film-coated tablet contains 300 mg of darolutamide.

**3. LIST OF EXCIPIENTS**

Contains lactose. Read the package leaflet before use.

**4. PHARMACEUTICAL FORM AND CONTENTS**

96 film-coated tablets  
112 film-coated tablets

**5. METHOD AND ROUTE(S) OF ADMINISTRATION**

Read the package leaflet before use.  
Oral use

**6. SPECIAL WARNING THAT THE MEDICINAL PRODUCT MUST BE STORED OUT OF THE SIGHT AND REACH OF CHILDREN**

Keep out of the sight and reach of children.

**7. OTHER SPECIAL WARNING(S), IF NECESSARY**

**8. EXPIRY DATE**

EXP

**9. SPECIAL STORAGE CONDITIONS**

**10. SPECIAL PRECAUTIONS FOR DISPOSAL OF UNUSED MEDICINAL PRODUCTS OR WASTE MATERIALS DERIVED FROM SUCH MEDICINAL PRODUCTS, IF APPROPRIATE**

**11. NAME AND ADDRESS OF THE MARKETING AUTHORISATION HOLDER**

Bayer AG  
51368 Leverkusen  
Germany

**12. MARKETING AUTHORISATION NUMBER(S)**

EU/1/20/1432/001 112 film-coated tablets  
EU/1/20/1432/002 96 film-coated tablets

**13. BATCH NUMBER**

Lot

**14. GENERAL CLASSIFICATION FOR SUPPLY**

**15. INSTRUCTIONS ON USE**

**16. INFORMATION IN BRAILLE**

NUBEQA 300 mg

**17. UNIQUE IDENTIFIER – 2D BARCODE**

2D barcode carrying the unique identifier included.

**18. UNIQUE IDENTIFIER - HUMAN READABLE DATA**

PC  
SN  
NN

**MINIMUM PARTICULARS TO APPEAR ON BLISTERS OR STRIPS**

**BLISTER**

**1. NAME OF THE MEDICINAL PRODUCT**

NUBEQA 300 mg tablets  
darolutamide

**2. NAME OF THE MARKETING AUTHORISATION HOLDER**

Bayer (logo)

**3. EXPIRY DATE**

EXP

**4. BATCH NUMBER**

Lot

**5. OTHER**

**B. PACKAGE LEAFLET**

## Package leaflet: Information for the patient

### NUBEQA 300 mg film-coated tablets darolutamide

▼ This medicine is subject to additional monitoring. This will allow quick identification of new safety information. You can help by reporting any side effects you may get. See the end of section 4 for how to report side effects.

#### **Read all of this leaflet carefully before you start taking this medicine because it contains important information for you.**

- Keep this leaflet. You may need to read it again.
- If you have any further questions, ask your doctor or pharmacist.
- This medicine has been prescribed for you only. Do not pass it on to others. It may harm them, even if their signs of illness are the same as yours.
- If you get any side effects, talk to your doctor or pharmacist. This includes any possible side effects not listed in this leaflet. See section 4.

#### **What is in this leaflet**

1. What NUBEQA is and what it is used for
2. What you need to know before you take NUBEQA
3. How to take NUBEQA
4. Possible side effects
5. How to store NUBEQA
6. Contents of the pack and other information

#### **1. What NUBEQA is and what it is used for**

NUBEQA contains the active substance darolutamide. It is used to treat **adult men with prostate cancer** that has not spread to other parts of the body and no longer responds to medical or surgical treatment that lowers testosterone (also called castration-resistant prostate cancer).

#### **How NUBEQA works**

NUBEQA blocks the activity of male sex hormones called androgens, such as testosterone. By blocking these hormones, darolutamide stops prostate cancer cells from growing and dividing.

#### **2. What you need to know before you take NUBEQA**

##### **Do not take NUBEQA if**

- you are allergic to darolutamide or any of the other ingredients of this medicine (listed in section 6)
- you are a woman who is or may become pregnant.

#### **Warnings and precautions**

Talk to your doctor or pharmacist before taking NUBEQA if

- you have problems with your kidneys
- you have problems with your liver
- you have any heart conditions including heart rhythm problems or if you are using medicines for these conditions
- you had a surgery to treat blood vessel conditions.



### **Children and adolescents**

This medicine is not for use in children and adolescents under 18 years. Prostate cancer does not occur in this age group.

### **Other medicines and NUBEQA**

Tell your doctor or pharmacist if you are taking, have recently taken or might take any other medicines.

The following medicines may influence the effect of NUBEQA, or NUBEQA may influence the effect of these medicines to treat:

- bacterial infections, such as **rifampicin**
- epilepsy, such as **carbamazepine, phenobarbital, phenytoin**
- symptoms of slightly low mood and mild anxiety: **St. John's wort** (a herbal medicine)
- high cholesterol, such as **rosuvastatin, fluvastatin, atorvastatin, pitavastatin**
- severe joint inflammation, severe cases of the skin disease psoriasis, and cancers: **methotrexate**
- inflammatory bowel diseases: **sulfasalazine**

Your doctor may therefore change the dose of the medicines that you are taking.

### **Pregnancy, breast-feeding and fertility**

#### **NUBEQA is not for use in women.**

This medicine could possibly have an effect on male fertility.

Follow these advices during and for 1 week after stopping:

- use a highly effective method of contraception to prevent pregnancy, if you are having sex with a woman who can become pregnant.
- use a condom to protect the unborn baby, if you are having sex with a pregnant woman.

### **Driving and using machines**

This medicine is unlikely to affect your ability to drive and use machines.

### **NUBEQA contains lactose**

If you have been told by your doctor that you have an intolerance to some sugars, contact your doctor before taking this medicine.

## **3. How to take NUBEQA**

Always take this medicine exactly as your doctor or pharmacist has told you. Check with your doctor or pharmacist if you are not sure.

### **The recommended dose is**

2 tablets 2 times daily

Your doctor may reduce your dose to 1 tablet 2 times daily, if you have problems with your liver or kidneys.

### **Method of use**

Swallow the tablets whole, take them with food and a glass of water.

Your doctor may also prescribe other medicines while you are taking NUBEQA.

### **If you take more NUBEQA than you should**

Continue the treatment with the next dose as scheduled.

**If you forget to take NUBEQA**

Take your missed dose as soon as you remember before the next scheduled dose. Do not take a double dose to make up for 1 or more forgotten tablets.

**If you stop taking NUBEQA**

Do not stop taking this medicine unless your doctor tells you to.

If you have any further questions on the use of this medicine, ask your doctor or pharmacist.

**4. Possible side effects**

Like all medicines, this medicine can cause side effects, although not everybody gets them.

Side effects of NUBEQA with the following frequencies:

**Very common side effects** (may affect more than 1 in 10 people):

- tiredness

**Common side effects** (may affect up to 1 in 10 people):

- blockage of the arteries in the heart
- heart failure
- rash
- pain in arms and legs
- pain in muscles and bones
- broken bones

**Very common side effects that may show up in blood tests:**

- reduced number of a white blood cell type called neutrophils
- increased blood levels of substances produced by the liver: bilirubin, aspartate transaminase

**Reporting of side effects**

If you get any side effects, talk to your doctor or pharmacist. This includes any possible side effects not listed in this leaflet. You can also report side effects directly via the national reporting system listed in [Appendix V](#). By reporting side effects, you can help provide more information on the safety of this medicine.

**5. How to store NUBEQA**

Keep this medicine out of the sight and reach of children.

Do not use this medicine after the expiry date which is stated on the carton and on each blister after EXP. The expiry date refers to the last day of that month.

This medicine does not require any special storage conditions.

Do not throw away any medicines via wastewater or household waste. Ask your pharmacist how to throw away medicines you no longer use. These measures will help protect the environment.

## **6. Contents of the pack and other information**

### **What NUBEQA contains**

The active substance is darolutamide. Each film-coated tablet contains 300 mg of darolutamide.

The other ingredients are:

- calcium hydrogen phosphate (E 341)
- croscarmellose sodium
- hypromellose
- lactose monohydrate
- macrogol (E 1521)
- magnesium stearate (E 470b)
- povidone (E 1201)
- titanium dioxide (E 171)

See “NUBEQA contains lactose” in section 2 for more information.

### **What NUBEQA looks like and contents of the pack**

The film-coated tablets (tablets) are white to off-white, oval with a length of 16 mm and a width of 8 mm. They are marked with “300” on one side, and “BAYER” on the other side.

Each carton contains:

- 96 film-coated tablets consisting of 6 blisters or
- 112 film-coated tablets consisting of 7 blisters

Each blister contains 16 film-coated tablets.

Not all pack sizes may be marketed.

### **Marketing Authorisation Holder**

Bayer AG  
51368 Leverkusen  
Germany

### **Manufacturer**

Orion Corporation, Orion Pharma  
24100 Salo  
Finland

For any information about this medicine, please contact the local representative of the Marketing Authorisation Holder:

**België/Belgique/Belgien**

Bayer SA-NV  
Tél/Tel: +32-(0)2-5356311

**България**

Байер България ЕООД  
Тел.: +359 02 424 72 80

**Česká republika**

Bayer s.r.o.  
Tel: +420 266 101 111

**Danmark**

Bayer A/S  
Tlf: +45 45 23 50 00

**Deutschland**

Bayer Vital GmbH  
Tel: +49 (0)214-30 513 48

**Eesti**

Bayer OÜ  
Tel: +372 655 8565

**Ελλάδα**

Bayer Ελλάς ABEE  
Τηλ: +30 210-618 75 00

**España**

Bayer Hispania S.L.  
Tel: +34-93-495 65 00

**France**

Bayer HealthCare  
Tél (N° vert): +33-(0)800 87 54 54

**Hrvatska**

Bayer d.o.o.  
Tel: +385-(0)1-6599 900

**Ireland**

Bayer Limited  
Tel: +353 1 216 3300

**Ísland**

Icepharma hf.  
Sími: +354 540 8000

**Italia**

Bayer S.p.A.  
Tel: +39 02 397 81

**Κύπρος**

NOVAGEM Limited  
Τηλ: +357 22 48 38 58

**Latvija**

SIA Bayer  
Tel: +371 67 84 55 63

**Lietuva**

UAB Bayer  
Tel. +37 05 23 36 868

**Luxembourg/Luxemburg**

Bayer SA-NV  
Tél/Tel: +32-(0)2-535 63 11

**Magyarország**

Bayer Hungária KFT  
Tel:+36 14 87-41 00

**Malta**

Alfred Gera and Sons Ltd.  
Tel: +35 621 44 62 05

**Nederland**

Bayer B.V.  
Tel: +31-(0)297-28 06 66

**Norge**

Bayer AS  
Tlf: +47 24 11 18 00

**Österreich**

Bayer Austria Ges.m.b.H.  
Tel: +43-(0)1-711 46-0

**Polska**

Bayer Sp. z.o.o.  
Tel: +48 22 572 35 00

**Portugal**

Bayer Portugal, Lda.  
Tel: +351 21 416 42 00

**România**

SC Bayer s.r.l.  
Tel: +40 21 529 59 00

**Slovenija**

Bayer d. o. o.  
Tel: +386 1 58 14 400

**Slovenská republika**

Bayer spol. s r.o.  
Tel. +421 2 59 21 31 11

**Suomi/Finland**

Bayer Oy  
Puh/Tel: +358 20 785 21

**Sverige**

Bayer AB  
Tel: +46 (0) 8 580 223 00

**United Kingdom**

Bayer plc  
Tel: +44-(0)118 206 3000

**This leaflet was last revised in**

Detailed information on this medicine is available on the European Medicines Agency web site:  
<http://www.ema.europa.eu>.