

ANNEX I
SUMMARY OF PRODUCT CHARACTERISTICS

1. NAME OF THE MEDICINAL PRODUCT

ONIVYDE pegylated liposomal 4.3 mg/ml concentrate for dispersion for infusion

2. QUALITATIVE AND QUANTITATIVE COMPOSITION

One 10 ml vial of concentrate contains 43 mg irinotecan anhydrous free base (as irinotecan sucrososfate salt in a pegylated liposomal formulation).

One ml of concentrate contains 4.3 mg irinotecan anhydrous free base (as irinotecan sucrososfate salt in a pegylated liposomal formulation).

Excipient with known effect

One ml of concentrate contains 0.144 mmol (3.31 mg) sodium.
For the full list of excipients, see section 6.1.

3. PHARMACEUTICAL FORM

Concentrate for dispersion for infusion.
White to slightly yellow opaque isotonic liposomal dispersion.
The concentrate has a pH of 7.2 and an osmolality of 295 mOsm/kg.

4. CLINICAL PARTICULARS

4.1 Therapeutic indications

Treatment of metastatic adenocarcinoma of the pancreas, in combination with 5-fluorouracil (5-FU) and leucovorin (LV), in adult patients who have progressed following gemcitabine based therapy.

4.2 Posology and method of administration

ONIVYDE pegylated liposomal (irinotecan) must only be prescribed and administered to patients by healthcare professionals experienced in the use of anti-cancer therapies.

ONIVYDE pegylated liposomal (irinotecan) is not equivalent to non-liposomal irinotecan formulations and should not be interchanged.

Posology

ONIVYDE pegylated liposomal, leucovorin and 5-fluorouracil should be administered sequentially. The recommended dose and regimen of ONIVYDE pegylated liposomal is 70 mg/m² intravenously over 90 minutes, followed by LV 400 mg/m² intravenously over 30 minutes, followed by 5-FU 2,400 mg/m² intravenously over 46 hours, administered every 2 weeks. ONIVYDE pegylated liposomal should not be administered as a single agent.

A reduced starting dose of ONIVYDE pegylated liposomal (irinotecan) of 50 mg/m² should be considered for patients known to be homozygous for the UGT1A1*28 allele (see sections 4.8 and 5.1). A dose increase of ONIVYDE pegylated liposomal to 70 mg/m² should be considered if tolerated in subsequent cycles.

Pre-medication

It is recommended that patients receive pre-medication with standard doses of dexamethasone (or an equivalent corticosteroid) together with a 5-HT₃ antagonist (or other antiemetic) at least 30 minutes prior to ONIVYDE pegylated liposomal infusion.

Dosage adjustments

All dose modifications should be based on the worst preceding toxicity. The LV dose does not require adjustment. For Grade 1 and 2 toxicities there are no dose modifications recommended. Dose adjustments, as summarised in Table 1 and Table 2, are recommended to manage Grade 3 or 4 toxicities related to ONIVYDE pegylated liposomal.

For patients who start treatment with 50 mg/m² ONIVYDE pegylated liposomal and do not dose escalate to 70 mg/m², the recommended first dose reduction is to 43 mg/m² and the second dose reduction is to 35 mg/m². Patients who require further dose reduction should discontinue treatment.

Patients who are known to be homozygous for UGT1A1*28 and without drug related toxicities during the first cycle of therapy (reduced dose of 50 mg/m²) may have the dose of ONIVYDE pegylated liposomal increased to a total dose of 70 mg/m² in subsequent cycles based on individual patient tolerance.

Table 1: Recommended dose modifications for ONIVYDE pegylated liposomal +5-FU/LV for Grade 3-4 toxicities for patients not homozygous for UGT1A1*28

Toxicity grade (value) by NCI CTCAE v 4.0¹	ONIVYDE pegylated liposomal /5-FU adjustment (for patients not homozygous for UGT1A1*28)	
Haematological toxicities		
<u>Neutropenia</u>	A new cycle of therapy should not begin until the absolute neutrophil count is $\geq 1,500$ cells/mm ³	
<u>Grade 3 or Grade 4 (< 1,000 cells/mm³) or Neutropenic fever</u>	<i>First occurrence</i>	Reduce ONIVYDE pegylated liposomal dose to 50 mg/m ² Reduce 5-FU dose by 25% (1,800 mg/m ²).
	<i>Second occurrence</i>	Reduce ONIVYDE pegylated liposomal dose to 43 mg/m ² Reduce 5-FU dose by an additional 25% (1,350 mg/m ²).
	<i>Third occurrence</i>	Discontinue treatment
<u>Thrombocytopenia</u> <u>Leukopenia</u>	A new cycle of therapy should not begin until the platelet count is $\geq 100,000$ platelets/mm ³ Dose modifications for leukopenia and thrombocytopenia are based on NCI CTCAE toxicity grading and are the same as recommended for neutropenia above.	
Non haematological toxicities²		
<u>Diarrhoea</u>	A new cycle of therapy should not begin until diarrhoea resolves to \leq Grade 1 (2-3 stools/day more than pre-treatment frequency).	
<i>Grade 2</i>	A new cycle of therapy should not begin until diarrhoea resolves to \leq Grade 1 (2-3 stools/day more than pre-treatment frequency).	

Toxicity grade (value) by NCI CTCAE v 4.0¹	ONIVYDE pegylated liposomal /5-FU adjustment (for patients not homozygous for UGT1A1*28)	
Grade 3 or 4	First occurrence	Reduce ONIVYDE pegylated liposomal dose to 50 mg/m ² Reduce 5-FU dose by 25% (1,800 mg/m ²)
	Second occurrence	Reduce ONIVYDE pegylated liposomal dose to 43 mg/m ² Reduce 5-FU dose by an additional 25% (1,350 mg/m ²)
	Third occurrence	Discontinue treatment
<u>Nausea/vomiting</u>	A new cycle of therapy should not begin until nausea/vomiting resolves to ≤ Grade 1 or baseline	
Grade 3 or 4 (despite antiemetic therapy)	First occurrence	Optimise antiemetic therapy Reduce ONIVYDE pegylated liposomal dose to 50 mg/m ²
	Second occurrence	Optimise antiemetic therapy Reduce ONIVYDE pegylated liposomal dose to 43 mg/m ²
	Third occurrence	Discontinue treatment
<u>Hepatic, renal, respiratory or other² toxicities</u> Grade 3 or 4	A new cycle of therapy should not begin until the adverse reaction resolves to ≤ Grade 1	
	First occurrence	Reduce ONIVYDE pegylated liposomal dose to 50 mg/m ² Reduce 5-FU dose by 25% (1,800 mg/m ²)
	Second occurrence	Reduce ONIVYDE pegylated liposomal dose to 43 mg/m ² Reduce 5-FU dose by an additional 25% (1,350 mg/m ²)
	Third occurrence	Discontinue treatment
Anaphylactic reaction	First occurrence	Discontinue treatment

¹ NCI CTCAE v 4.0 = National Cancer Institute Common Terminology Criteria for Adverse Events version 4.0

² Excludes asthenia and anorexia; Asthenia and Grade 3 anorexia do not require dose adjustment.

Table 2: Recommended dose modifications for ONIVYDE pegylated liposomal +5-FU/LV for Grade 3-4 toxicities in patients homozygous for UGT1A1*28

Toxicity grade (value) by NCI CTCAE v 4.0¹	ONIVYDE pegylated liposomal /5-FU adjustment (for patients homozygous for UGT1A1*28 without previous increase³ to 70 mg/m²)	
Adverse reactions² Grade 3 or 4	A new cycle of therapy should not begin until adverse event resolves to ≤ Grade 1	
	First occurrence	Reduce ONIVYDE pegylated liposomal dose to 43 mg/m ² 5-FU dose modification as in Table 1
	Second occurrence	Reduce ONIVYDE pegylated liposomal dose to 35 mg/m ² 5-FU dose modification as in Table 1

	<i>Third occurrence</i>	Discontinue treatment
--	--------------------------------	-----------------------

¹ NCI CTCAE v 4.0 = National Cancer Institute Common Terminology Criteria for Adverse Events version 4.0

² Excludes asthenia and anorexia; asthenia and Grade 3 anorexia do not require dose adjustment.

³ In case of a dose increase of ONIVYDE pegylated liposomal to 70 mg/m² if tolerated in subsequent cycles, recommended dose modifications should follow Table 1.

Special populations

Hepatic impairment

No dedicated hepatic impairment study has been conducted with ONIVYDE pegylated liposomal. The use of ONIVYDE pegylated liposomal should be avoided in patients with bilirubin > 2.0 mg/dl, or aspartate aminotransferase (AST) and alanine aminotransferase (ALT) > 2.5 times upper limit of normal (ULN) or > 5 times ULN if liver metastasis is present (see section 4.4).

Renal impairment

No dedicated renal impairment study has been conducted with ONIVYDE pegylated liposomal. No dose adjustment is recommended in patients with mild to moderate renal impairment (see sections 4.4 and 5.2). ONIVYDE pegylated liposomal is not recommended for use in patients with severe renal impairment (CLcr < 30 ml/min).

Elderly

Forty-one percent (41%) of patients treated with ONIVYDE pegylated liposomal across the clinical program were ≥ 65 years. No dose adjustment is recommended.

Paediatric population

The safety and efficacy of ONIVYDE pegylated liposomal in children and adolescents aged ≤ 18 years have not yet been established. No data are available.

Method of administration

ONIVYDE pegylated liposomal is for intravenous use. The concentrate must be diluted prior to administration and given as single intravenous infusion over 90 minutes. For more details see section 6.6.

Precautions to be taken before handling or administering the medicinal product

ONIVYDE pegylated liposomal is a cytotoxic medicinal product. The use of gloves, goggles and protective clothing when handling or administering ONIVYDE pegylated liposomal is recommended. Pregnant staff should not handle ONIVYDE pegylated liposomal.

4.3 Contraindications

History of severe hypersensitivity to irinotecan or to any of the excipients listed in section 6.1.

Breast-feeding (see section 4.6).

4.4 Special warnings and precautions for use

General

ONIVYDE pegylated liposomal is a liposomal formulation of irinotecan with different pharmacokinetic properties compared to non-liposomal irinotecan. The dose concentration and strength are different in comparison to non-liposomal irinotecans.

ONIVYDE pegylated liposomal is not equivalent to other non-liposomal irinotecan formulations and should not be interchanged.

In the limited number of patients with prior exposure to non-liposomal irinotecan, no benefit of ONIVYDE pegylated liposomal has been demonstrated.

Myelosuppression/neutropenia

Complete blood cell count monitoring is recommended during ONIVYDE pegylated liposomal treatment. Patients should be aware of the risk of neutropenia and the significance of fever. The median time to nadir for \geq Grade 3 neutropenia is 23 (range 8-104) days post first dose of treatment with ONIVYDE pegylated liposomal. Febrile neutropenia (body temperature $> 38^{\circ}\text{C}$ and neutrophil count $\leq 1,000$ cells/ mm^3) should be urgently treated in the hospital with broad-spectrum intravenous antibiotics. ONIVYDE pegylated liposomal should be withheld if neutropenic fever occurs or the absolute neutrophil count drops below 1,500 cells/ mm^3 . Sepsis with neutropenic fever and consequent septic shock with fatal outcome has been observed in patients with metastatic pancreatic adenocarcinoma treated with ONIVYDE pegylated liposomal.

In patients who experienced severe haematological events, a dose reduction or treatment discontinuation is recommended (see section 4.2). Patients with severe bone marrow failure should not be treated with ONIVYDE pegylated liposomal.

History of prior abdominal radiation increases the risk of severe neutropenia and febrile neutropenia following ONIVYDE pegylated liposomal treatment. Close monitoring of blood counts is recommended, and the use of myeloid growth factors should be considered for patients with a history of abdominal radiation. Caution should be exercised in patients receiving concurrent administration of ONIVYDE pegylated liposomal with irradiation.

Patients with deficient glucuronidation of bilirubin, such as those with Gilbert's syndrome, may be at greater risk of myelosuppression when receiving therapy with ONIVYDE pegylated liposomal.

Compared to Caucasian patients, Asian patients have an increased risk of severe and febrile neutropenia following treatment with ONIVYDE pegylated liposomal +5-FU/LV (see sections 4.8 and 5.2).

Immunosuppressive effects and vaccines

Administration of live or live-attenuated vaccines in patients immunocompromised by chemotherapeutic medicinal products including ONIVYDE pegylated liposomal may result in serious or fatal infections; therefore vaccination with a live vaccine should be avoided. Killed or inactivated vaccines may be administered; however, the response to such vaccines may be diminished.

Interactions with strong CYP3A4 inducers

ONIVYDE pegylated liposomal should not be administered with strong CYP3A4-enzyme inducers such as anticonvulsants (phenytoin, phenobarbital or carbamazepine), rifampin, rifabutin and St. John's wort unless there are no therapeutic alternatives. The appropriate starting dose for patients taking these anticonvulsants or other strong inducers has not been defined. Consideration should be given to substituting with non-enzyme inducing therapies at least 2 weeks prior to initiation of ONIVYDE pegylated liposomal therapy (see section 4.5).

Interactions with strong CYP3A4 inhibitors or strong UGT1A1 inhibitors

ONIVYDE pegylated liposomal should not be administered with strong CYP3A4-enzyme inhibitors (e.g. grapefruit juice, clarithromycin, indinavir, itraconazole, lopinavir, nefazodone, nelfinavir, ritonavir, saquinavir, telaprevir, voriconazole). Strong CYP3A4 inhibitors should be discontinued at least 1 week prior to starting ONIVYDE pegylated liposomal therapy.

ONIVYDE pegylated liposomal should not be administered with strong UGT1A inhibitors (e.g. atazanavir, gemfibrozil, indinavir) unless there are no therapeutic alternatives.

Diarrhoea

Diarrhoea can occur early (onset in ≤ 24 hours after starting ONIVYDE pegylated liposomal) or late (> 24 hours) (see section 4.8).

In patients experiencing early diarrhoea, therapeutic and prophylactic atropine should be considered unless contraindicated. Patients should be made aware of the risk of delayed diarrhoea which can be debilitating and, on rare occasions, life threatening since persistent loose or watery stools can result in dehydration, electrolyte imbalance, colitis, gastrointestinal (GI) ulceration, infection or sepsis.

As soon as the first liquid stool occurs, the patient should start drinking large volumes of beverages containing electrolytes. Patients should have loperamide (or equivalent) readily available to begin treatment for late diarrhoea. Loperamide should be initiated at first occurrence of poorly formed or loose stools or at the earliest onset of bowel movements more frequent than normal. Loperamide should be given until patient is without diarrhoea for at least 12 hours.

If diarrhoea persists while patient is on loperamide for more than 24 hours, adding oral antibiotic support (e.g. fluoroquinolone for 7 days) should be considered. Loperamide should not be used for more than 48 consecutive hours due to risk of paralytic ileus. If diarrhoea persists for more than 48 hours, stop loperamide, monitor and replace fluid electrolytes and continue antibiotic support until resolution for accompanying symptoms.

ONIVYDE pegylated liposomal treatment should be delayed until diarrhoea resolves to \leq Grade 1 (2-3 stools/day more than pre-treatment frequency). ONIVYDE pegylated liposomal must not be administered to patients with bowel obstruction, and chronic inflammatory bowel disease, until it is resolved.

Following Grade 3 or 4 diarrhoea, the subsequent dose of ONIVYDE pegylated liposomal should be reduced, (see section 4.2).

Cholinergic reactions

Early onset diarrhoea may be accompanied by cholinergic symptoms such as rhinitis, increased salivation, flushing, diaphoresis, bradycardia, miosis and hyperperistalsis. In case of cholinergic symptoms atropine should be administered.

Acute infusion and related reactions

Infusion reactions primarily consisting of rash, urticaria, periorbital oedema or pruritus were reported in patients receiving ONIVYDE pegylated liposomal treatment. New events (all grade 1 or grade 2) occurred generally early during ONIVYDE pegylated liposomal treatment, with only 2 out of 10 patients noted with events after the fifth dose. Hypersensitivity reactions, including acute infusion reaction may occur. ONIVYDE pegylated liposomal should be discontinued in case of severe hypersensitivity reactions.

Prior Whipple procedure

Patients with a history of a Whipple procedure have a higher risk of serious infections following ONIVYDE pegylated liposomal in combination with 5-FU and leucovorin (see section 4.8). Patients should be monitored for signs of infections.

Vascular disorders

Onivyde pegylated liposomal has been associated with thromboembolic events such as pulmonary embolism, venous thrombosis and arterial thromboembolism. A thorough medical history should be obtained in order to identify patients with multiple risk factors in addition to the underlying neoplasm. Patients should be informed about the signs and symptoms of thromboembolism and advised to contact their physician or nurse immediately if any such signs or symptoms should occur.

Pulmonary toxicity

Interstitial Lung Disease (ILD)-like events leading to fatalities have occurred in patients receiving non-liposomal irinotecan. No cases of ILD-like events have been reported with ONIVYDE pegylated

liposomal therapy in clinical studies. Risk factors include pre-existing lung disease, use of pneumotoxic medicinal products, colony stimulating factors or having previously received radiation therapy. Patients with risk factors should be closely monitored for respiratory symptoms before and during ONIVYDE pegylated liposomal therapy. A reticulo-nodular pattern on chest X-ray was observed in a small percentage of patients enrolled in a clinical study with irinotecan. New or progressive dyspnoea, cough, and fever should prompt interruption of ONIVYDE pegylated liposomal treatment, pending diagnostic evaluation. ONIVYDE pegylated liposomal should be discontinued in patients with a confirmed diagnosis of ILD.

Hepatic impairment

Patients with hyperbilirubinaemia had higher concentrations for total SN-38 (see section 5.2) and therefore the risk of neutropenia is increased. Regular monitoring of complete blood counts should be conducted in patients with total bilirubin of 1.0-2.0 mg/dl. Caution should be exercised in patients with hepatic impairment (bilirubin > 2 times upper limit of normal [ULN]; transaminases > 5 times ULN). Caution is required when ONIVYDE pegylated liposomal is given in combination with other hepatotoxic medicinal products, especially in patients with pre-existing hepatic impairment.

Renal impairment

The use of ONIVYDE pegylated liposomal in patients with significant renal impairment has not been established (see section 5.2).

Underweight patients (body mass index < 18.5 kg/m²)

In the clinical study evaluating ONIVYDE pegylated liposomal +5-FU/LV, 5 of 8 underweight patients experienced a Grade 3 or 4 adverse reactions, mostly myelosuppression, while 7 of the 8 patients required dose modification such as dose delay, dose reduction or dose discontinuation. Caution should be exercised when using ONIVYDE pegylated liposomal in patients with body mass index < 18.5 kg/m².

Excipients

Each ml of ONIVYDE pegylated liposomal contains 0.144 mmol (3.31 mg) sodium. This needs to be taken into consideration by patients on a controlled sodium diet.

4.5 Interaction with other medicinal products and other forms of interaction

Information about drug interactions with ONIVYDE pegylated liposomal is referenced from the published scientific literature for nonliposomal irinotecan.

Interaction affecting the use of ONIVYDE pegylated liposomal

Strong CYP3A4 inducers

Patients receiving concomitant non-liposomal irinotecan and CYP3A4 enzyme-inducing anticonvulsants phenytoin, phenobarbital or carbamazepine have substantially reduced exposure to irinotecan (AUC reduction by 12% with St John's wort, 57%-79% with phenytoin, phenobarbital, or carbamazepine) and SN-38 (AUC reduction by 42% with St John's wort, 36%-92% with phenytoin, phenobarbital, or carbamazepine). Therefore, co-administration of ONIVYDE pegylated liposomal with inducers of CYP3A4 may reduce systemic exposure of ONIVYDE pegylated liposomal.

Strong CYP3A4 inhibitors and UGT1A1 inhibitors

Patients receiving concomitant non-liposomal irinotecan and ketoconazole, a CYP3A4 and UGT1A1 inhibitor, have increased SN-38 exposure by 109%. Therefore, co-administration of ONIVYDE pegylated liposomal with other inhibitors of CYP3A4 (e.g. grapefruit juice, clarithromycin, indinavir, itraconazole, lopinavir, nefazodone, nelfinavir, ritonavir, saquinavir, telaprevir, voriconazole) may increase systemic exposure of ONIVYDE pegylated liposomal. Based

on the drug interaction of non-liposomal irinotecan and ketoconazole, co-administration of ONIVYDE pegylated liposomal with other inhibitors of UGT1A1 (e.g. atazanavir, gemfibrozil, indinavir, regorafenib) may also increase systemic exposure of ONIVYDE pegylated liposomal.

Co-administration of ONIVYDE pegylated liposomal +5-FU/LV does not alter the pharmacokinetics of ONIVYDE pegylated liposomal based on the population pharmacokinetic analysis.

No interaction of ONIVYDE pegylated liposomal (irinotecan) with other medicinal products is known.

4.6 Fertility, pregnancy and lactation

Women of childbearing potential / contraception in males and females

Women of childbearing potential should use effective contraception during ONIVYDE pegylated liposomal treatment and 1 month thereafter. Males should use condoms during ONIVYDE pegylated liposomal treatment and 4 months thereafter.

Pregnancy

There are no adequate data on the use of ONIVYDE pegylated liposomal in pregnant women. ONIVYDE pegylated liposomal can cause harm to the foetus when administered to the pregnant woman, as the main ingredient irinotecan has been shown to be embryotoxic and teratogenic in animals (see section 5.3). Therefore, based on results from animal studies and the mechanism of action of irinotecan, ONIVYDE pegylated liposomal should not be used during pregnancy unless clearly necessary. If ONIVYDE pegylated liposomal is used during pregnancy or if the patient becomes pregnant while receiving therapy, the patient should be informed about the potential hazard to the foetus.

Breast-feeding

It is unknown whether ONIVYDE pegylated liposomal or its metabolites are excreted into human milk. Because of the potential for serious adverse reactions of ONIVYDE pegylated liposomal in breast-feeding infants, ONIVYDE pegylated liposomal is contraindicated during breast-feeding (see section 4.3). Patients should not breast-feed until one month after the last dose.

Fertility

There are no data on the impact of ONIVYDE pegylated liposomal on human fertility. Non-liposomal irinotecan was shown to cause atrophy of male and female reproductive organs after multiple daily irinotecan doses in animals (see section 5.3).

4.7 Effects on ability to drive and use machines

ONIVYDE pegylated liposomal has moderate influence on the ability to drive and use machines. During treatment patients should observe caution when driving or using machines.

4.8 Undesirable effects

Summary of the safety profile

The following adverse reactions, considered to be possibly or probably related to the administration of ONIVYDE pegylated liposomal, were reported in 264 patients with metastatic adenocarcinoma of the pancreas, 147 of whom received ONIVYDE pegylated liposomal monotherapy (100 mg/m²) and 117 received ONIVYDE pegylated liposomal (70 mg/m²) in combination with 5-FU/LV. The most common adverse reactions (incidence \geq 20%) of ONIVYDE pegylated liposomal +5-FU/LV were: diarrhoea, nausea, vomiting, decreased appetite, neutropenia, fatigue, asthenia, anaemia,

stomatitis and pyrexia. The most common serious adverse reactions ($\geq 2\%$) of ONIVYDE pegylated liposomal therapy were diarrhoea, vomiting, febrile neutropenia, nausea, pyrexia, sepsis, dehydration, septic shock, pneumonia, acute renal failure, and thrombocytopenia.

The rates of adverse reactions leading to permanent treatment discontinuation were 11% for the ONIVYDE pegylated liposomal +5-FU/LV arm and 12% for the monotherapy arm.

The most frequently reported adverse reactions leading to discontinuation were infection and diarrhoea for ONIVYDE pegylated liposomal +5-FU/LV arm, and vomiting and diarrhoea for the monotherapy arm.

Tabulated list of adverse reactions

The adverse reactions that may occur during treatment with ONIVYDE pegylated liposomal are summarised below and are presented by system organ class and frequency category (Table 3). Within each system organ class and frequency category, adverse reactions are presented in order of decreasing seriousness. Frequency categories used for adverse reactions are: very common ($\geq 1/10$); common ($\geq 1/100$ to $< 1/10$); uncommon ($\geq 1/1,000$ to $< 1/100$) and rare ($\geq 1/10,000$ to $< 1/1,000$)**.

Table 3: Adverse reactions reported with ONIVYDE pegylated liposomal therapy in the NAPOLI-1 clinical study

MedDRA* system organ class	Adverse reaction frequency**
Infections and infestations	<u>Common:</u> Septic shock, Sepsis, Pneumonia, Febrile neutropenia, Gastroenteritis, Oral candidiasis <u>Uncommon:</u> Biliary sepsis
Blood and lymphatic system disorders	<u>Very common:</u> Neutropenia, Leukopenia, Anaemia, Thrombocytopenia <u>Common:</u> Lymphopenia
Immune system disorders	<u>Uncommon:</u> <i>Hypersensitivity</i>
Metabolism and nutrition disorders	<u>Very common:</u> Hypokalaemia, Hypomagnesaemia, Dehydration, Decreased appetite <u>Common:</u> Hypoglycaemia, Hyponatraemia, Hypophosphataemia
Psychiatric disorders	<u>Common:</u> Insomnia
Nervous system disorders	<u>Very common:</u> Dizziness <u>Common:</u> Cholinergic syndrome, Dysgeusia
Cardiac disorders	<u>Common:</u> Hypotension
Vascular disorders	<u>Common:</u> Pulmonary embolism, Embolism, Deep vein thrombosis <u>Uncommon:</u> Thrombosis
Respiratory, thoracic and mediastinal disorders	<u>Common:</u> Dyspnoea, Dysphonia <u>Uncommon:</u> Hypoxia
Gastrointestinal disorders	<u>Very common:</u> Diarrhoea, Vomiting, Nausea, Abdominal pain, Stomatitis <u>Common:</u> Colitis, Haemorrhoids <u>Uncommon:</u> Oesophagitis, Proctitis
Hepatobiliary disorders	<u>Common:</u> Hypoalbuminaemia

MedDRA* system organ class	Adverse reaction frequency**
Skin and subcutaneous tissue disorders	<i>Very common:</i> Alopecia <i>Uncommon:</i> Rash maculo-papular, Nail discolouration
Renal and urinary disorders	<i>Common:</i> Acute renal failure
General disorders and administration site conditions	<i>Very common:</i> Pyrexia, Peripheral oedema, Mucosal inflammation, Fatigue, Asthenia <i>Common:</i> Infusion related reaction, Oedema
Investigations	<i>Very common:</i> Weight decrease <i>Common:</i> Increased bilirubin, Increased alanine aminotransferase, Increased aspartate aminotransferase, Increased international normalised ratio

* MedDRA version 14.1

** Rare occurrence cannot be estimated from the NAPOLI-1 study due to the small sample size

Description of selected adverse reactions

The following adverse reactions were observed in the NAPOLI-1 clinical study:

Myelosuppression

Myelosuppression (neutropenia/leukopenia, thrombocytopenia and, anaemia) was more common in the ONIVYDE pegylated liposomal +5-FU/LV arm compared to the 5-FU/LV control arm.

Neutropenia/leukopenia

Neutropenia/leukopenia was the most notable important haematological toxicity. Grade 3 or higher neutropenia occurred more frequently in patients treated with ONIVYDE pegylated liposomal +5-FU/LV (27.4%) compared to patients treated with 5-FU/LV (1.5%). Neutropenic fever/sepsis appeared more frequently in the ONIVYDE pegylated liposomal +5-FU/LV combination arm [in 4 patients (3.4%)] compared to 5-FU/LV control arm [in 1 patient (0.7%)].

Thrombocytopenia

Grade 3 or higher thrombocytopenia occurred in 2.6% of patients treated with ONIVYDE pegylated liposomal +5-FU/LV and 0% in patients treated with 5-FU/LV.

Anaemia

Grade 3 or higher anaemia occurred in 10.3% of patients treated with ONIVYDE pegylated liposomal +5-FU/LV and in 6.7% of patients treated with 5-FU/LV.

Acute renal failure

Renal impairment and acute renal failure have been identified, usually in patients who become volume depleted from nausea/vomiting and/or diarrhoea. Acute renal failure was reported in 6 of 117 patients (5.1%) in the ONIVYDE pegylated liposomal +5-FU/LV arm, 10 of 147 (6.8%) in the ONIVYDE pegylated liposomal monotherapy arm and 6 of 134 patients (4.5%) in the 5-FU/LV arm.

Diarrhoea and related adverse reactions

Diarrhoea is a very common adverse reaction leading to colitis, ileus, gastroenteritis, fatigue, dehydration, weight loss, renal toxicities, hyponatraemia, and hypokalaemia. Renal impairment and acute renal failure have been identified, usually in patients who became volume depleted from severe vomiting and/or diarrhoea. In the clinical study Grade 3 or Grade 4 diarrhoea occurred in 15 out of 117 patients (12.8%) receiving ONIVYDE pegylated liposomal +5-FU/LV. For patients experiencing late diarrhoea, the median time to late diarrhoea onset was 8 days from the previous dose of ONIVYDE pegylated liposomal. Early onset diarrhoea, typically appearing \leq 24 hours after dose

administration, can occur and is usually transient. Early onset diarrhoea may also be accompanied by cholinergic symptoms that can include rhinitis, increased salivation, flushing, diaphoresis, bradycardia, miosis and hyperperistalsis that can induce abdominal cramping. In the clinical study, early diarrhoea onset occurred in 35 patients (29.9%) and cholinergic events occurred in 4 patients (3.4%) receiving ONIVYDE pegylated liposomal +5-FU/LV.

Withhold ONIVYDE pegylated liposomal for Grade 2-4 diarrhoea and initiate treatment for diarrhoea. Following recovery to Grade 1 diarrhoea, resume ONIVYDE pegylated liposomal at a reduced dose (see section 4.2).

Infusion reaction

Acute infusion reactions were reported in 8 of 117 patients (6.8%) in the ONIVYDE pegylated liposomal +5-FU/LV arm, 3 of 147 patients (2.0%) in the ONIVYDE pegylated liposomal monotherapy arm, and 8 of 134 patients (6.0%) in the 5-FU/LV arm.

Other special populations

Elderly

Overall, no major clinical differences in safety or efficacy were reported between patients ≥ 65 years and patients < 65 years, although a higher frequency of discontinuation (14.8% vs 7.9%) was noted in the former group treated with ONIVYDE pegylated liposomal +5-FU/LV in the NAPOLI-1 study and in some cases the adverse reactions did not resolve. Grade 3 or higher and serious treatment emergent adverse reactions were more frequent in patients < 65 years (84.1% and 50.8%) compared to patients ≥ 65 years (68.5 % and 44.4%). Conversely, patients > 75 years (n=12) experienced more frequent serious adverse reactions, dose delay, dose reduction and discontinuation compared to patients ≤ 75 years (n=105) when treated with ONIVYDE pegylated liposomal +5-FU/LV in the pancreatic adenocarcinoma study.

Asian population

Compared to Caucasians, Asian patients were observed with a lower incidence of diarrhoea [14 (19.2%) out of 73 Caucasians had a \geq Grade 3 diarrhoea, and 1 out of 33 (3.3%) Asians had a \geq Grade 3 diarrhoea], but a higher incidence and higher severity of neutropenia. In patients receiving ONIVYDE pegylated liposomal +5-FU/LV, the incidence of \geq Grade 3 neutropenia was higher among Asian patients [18 of 33 (55%)] compared to Caucasians patients [13 of 73 (18%)]. Neutropenic fever/neutropenic sepsis was reported in 6% of Asian patients compared to 1% of Caucasians patients. This is consistent with the population pharmacokinetic analysis that showed a lower exposure to irinotecan and a higher exposure to its active metabolite SN-38 in Asians than in Caucasians.

Patients with hepatic impairment

In clinical studies of non-liposomal irinotecan administered on a weekly dosage schedule, patients with modestly elevated baseline serum total bilirubin levels (1.0 to 2.0 mg/dl) had a significantly greater likelihood of experiencing first cycle Grade 3 or Grade 4 neutropenia than those with bilirubin levels that were less than 1.0 mg/dl.

Patients with prior Whipple procedure

In the clinical study evaluating ONIVYDE pegylated liposomal +5-FU/LV, patients with a prior Whipple procedure had a higher risk of serious infections following treatment with ONIVYDE pegylated liposomal +5-FU/LV [9 of 29 (30%)] compared to 11 of 88 (12.5%) patients with no prior Whipple procedure.

Patients with UGT1A1 allele

Individuals who are 7/7 homozygous for the UGT1A1*28 allele are at increased risk for neutropenia from non-liposomal irinotecan. In the clinical study evaluating ONIVYDE pegylated liposomal +5-FU/LV, the frequency of \geq Grade 3 neutropenia in these patients [2 of 7 (28.6%)] was similar to the frequency in patients not homozygous for the UGT1A1*28 allele who received a starting dose of ONIVYDE pegylated liposomal of 70 mg/m² [30 of 110 (27.3%)] (see section 5.1).

Underweight patients (body mass index < 18.5 kg/m²)

In the clinical study evaluating ONIVYDE pegylated liposomal +5-FU/LV, 5 of 8 underweight patients experienced a grade 3 or 4 adverse reaction, mostly myelosuppression, while 7 of the 8 patients required dose modification such as dose delay, dose reduction or dose discontinuation (see section 4.4).

Reporting of suspected adverse reactions

Reporting suspected adverse reactions after authorisation of the medicinal product is important. It allows continued monitoring of the benefit/risk balance of the medicinal product. Healthcare professionals are asked to report any suspected adverse reactions via the national reporting system listed in [Appendix V](#).

4.9 Overdose

In clinical trials, ONIVYDE pegylated liposomal was administered at doses up to 210 mg/m² to patients with various cancers. The adverse reactions in these patients were similar to those reported with the recommended dosage and regimen.

There have been reports of overdosage with non-liposomal irinotecan at doses up to approximately twice the recommended therapeutic dose of irinotecan, which may be fatal. The most significant adverse reactions reported were severe neutropenia and severe diarrhoea.

There is no known antidote for overdose of ONIVYDE pegylated liposomal. Maximum supportive care should be instituted to prevent dehydration due to diarrhoea and to treat any infectious complications.

5. PHARMACOLOGICAL PROPERTIES

5.1 Pharmacodynamic properties

Pharmacotherapeutic group: antineoplastic agents, other antineoplastic agents, ATC code: L01XX19

Mechanism of action

The active substance in ONIVYDE pegylated liposomal is irinotecan (topoisomerase I inhibitor) encapsulated in a lipid bilayer vesicle or liposome.

Irinotecan is a derivative of camptothecin. Camptothecins act as specific inhibitors of the enzyme DNA topoisomerase I. Irinotecan and its active metabolite SN-38 bind reversibly to the topoisomerase I-DNA complex and induce single-strand DNA lesions which block the DNA replication fork and are responsible for the cytotoxicity. Irinotecan is metabolized by carboxylesterase to SN-38. SN-38 is approximately 1,000 times as potent as irinotecan as an inhibitor of topoisomerase I purified from human and rodent tumour cell lines.

Pharmacodynamic effects

In animal models, ONIVYDE pegylated liposomal has been shown to extend plasma levels of irinotecan and prolong the exposure to the active metabolite SN-38 at the site of the tumour.

Clinical efficacy and safety

The safety and efficacy of ONIVYDE pegylated liposomal were investigated in a multinational, randomised, open label, controlled clinical trial (NAPOLI-1) that tested two treatment regimens for patients with metastatic pancreatic adenocarcinoma who had documented disease progression after gemcitabine or gemcitabine-containing therapy. The trial was designed to assess the clinical efficacy

and safety of ONIVYDE pegylated liposomal monotherapy or ONIVYDE pegylated liposomal +5-FU/LV compared to an active control arm of 5-FU/LV.

Patients randomised to ONIVYDE pegylated liposomal +5-FU/LV received ONIVYDE pegylated liposomal at 70 mg/m² as an intravenous infusion over 90 minutes, followed by LV 400 mg/m² intravenously over 30 minutes, followed by 5-FU 2,400 mg/m² intravenously over 46 hours, administered every 2 weeks. Patients homozygous for the UGT1A1*28 allele were given a lower initial dose of ONIVYDE pegylated liposomal (see section 4.2). Patients randomised to 5-FU/LV received leucovorin 200 mg/m² intravenously over 30 minutes, followed by 5-FU 2,000 mg/m² intravenously over 24 hours, administered on Days 1, 8, 15 and 22 of a 6 week cycle. Patients randomised to ONIVYDE pegylated liposomal monotherapy received 100 mg/m² as an intravenous infusion over 90 minutes every 3 weeks.

Key eligibility criteria for patients with metastatic adenocarcinoma of the pancreas in the NAPOLI-1 clinical study were Karnofsky Performance Status (KPS) \geq 70, normal bilirubin level, transaminase levels \leq 2.5 times the ULN or \leq 5 times the ULN for patients with liver metastases and albumin \geq 3.0 g/dl.

A total of 417 patients were randomised to the ONIVYDE pegylated liposomal +5-FU/LV arm (N=117), ONIVYDE pegylated liposomal monotherapy arm (N=151) and 5-FU/LV arm (N=149). Patient demographic and entry disease characteristics were well balanced between trial arms.

In the intent to treat (all randomised) population, the median age was 63 years (range 31-87 years), 57 % were males, and 61% were Caucasian and 33% were Asian. Mean baseline albumin level was 3.6 g/dl, and baseline KPS was 90-100 in 55% of patients. Disease characteristics included 68% of patients with liver metastases and 31% with lung metastases; 12% of patients had no prior lines of metastatic therapy, 56 % of patients had 1 prior line of metastatic therapy, 32% of patients had 2 or more prior lines of metastatic therapy.

Patients received treatment until disease progression or unacceptable toxicity. The primary outcome measure was Overall Survival (OS). Additional outcome measures included Progression Free Survival (PFS) and Objective Response Rate (ORR). Results are shown in Table 4. Overall survival is illustrated in Figure 1.

Table 4: Efficacy results from NAPOLI-1 clinical study

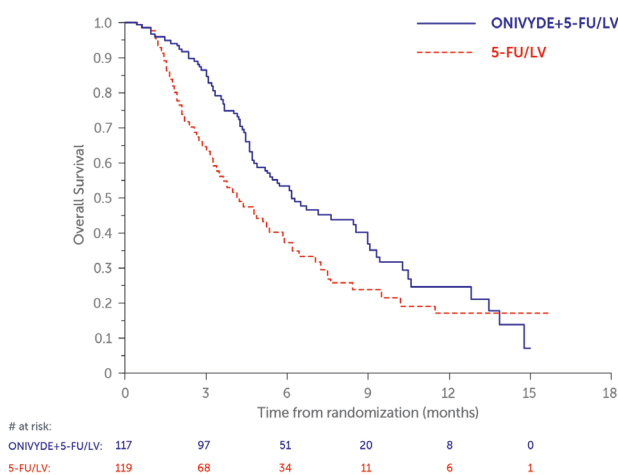
	ONIVYDE pegylated liposomal +5-FU/LV (N= 117)	5-FU/LV (N= 119)
Overall Survival¹		
Number of deaths, n (%)	75 (64)	80 (67)
Median OS (months)	6.1	4.2
(95% CI)	(4.8, 8.9)	(3.3, 5.3)
Hazard Ratio (95% CI) ³	0.67 (0.49-0.92)	
p-value ⁴	0.0122	
Progression-Free Survival^{1,2}		
Death or progression, n (%)	83 (71)	92 (77)

	ONIVYDE pegylated liposomal +5-FU/LV (N= 117)	5-FU/LV (N= 119)
Median PFS (months)	3.1	1.5
(95% CI)	(2.7, 4.2)	(1.4, 1.8)
Hazard Ratio (95% CI) ³	0.56 (0.41-0.75)	
p-value ⁴	0.0001	
Objective Response Rate²		
N	19	1
ORR (%)	16.2	0.8
95% CI of Rate ⁵	9.6, 22.9	0.0, 2.5
Rate Difference (95% CI) ⁵	15.4 (8.5, 22.3)	
p-value ⁶	< 0.0001	

- 1 Median is the Kaplan-Meier estimate of the median survival time
- 2 Per RECIST guidelines, v 1.1.
- 3 Cox model analysis
- 4 Unstratified log-rank test
- 5 Based on Normal approximation
- 6 Fisher's exact test

Abbreviations: 5-FU/LV=5-fluorouracil/leucovorin; CI=confidence interval

Figure 1: Overall survival



In the limited number of patients with prior exposure to non-liposomal irinotecan, no benefit of ONIVYDE pegylated liposomal has been demonstrated.

Paediatric population

The European Medicines Agency has waived the obligation to submit the results of studies with ONIVYDE pegylated liposomal in all subsets of the paediatric population in treatment of adenocarcinoma of the pancreas (see section 4.2 for information on paediatric use).

5.2 Pharmacokinetic properties

Absorption

Liposome encapsulation of irinotecan extends circulation and limits distribution relative to those of the non-liposomal irinotecan.

The plasma pharmacokinetics of total irinotecan and total SN-38 were evaluated in patients with cancer who received ONIVYDE pegylated liposomal, as a single agent or as part of combination chemotherapy, at doses between 50 and 155 mg/m². The pharmacokinetic parameters of total irinotecan and SN-38 analytes, following the administration of ONIVYDE pegylated liposomal 70 mg/m² are presented in Table 5.

Table 5: Summary of mean (±standard deviation) total irinotecan and total SN-38

Analyte	PK parameters	Unit	ONIVYDE pegylated liposomal geomean (95% CI) ^a 70 mg/m ² (n=353) ^b	Non-liposomal irinotecan mean (SD) 125 mg/m ² (n=99) ^c
Total irinotecan	AUC	h×ng/ml	919,228 (845,653-999,204)	10,529 (3,786)
	C _{max}	ng/ml	28,353 (27,761-28,958)	1,492 (452)
	Clearance (CL)	l/h/m ²	0.087 (0.080-0.094)	13.0 (5.6)
	Volume (V)	l/m ²	2.6 (2.6-2.7)	138 (60.9)
	t _{1/2 effective}	h	20.8 (19.4-22.3)	6.07 (1.19)
Total SN-38	AUC	h×ng/ml	341 (326-358)	267 (115)
	C _{max}	ng/ml	3.0 (2.9-3.1)	27.8 (11.6)
	t _{1/2 effective}	h	40.9 (39.8-42.0)	11.7 (4.29)

SD= standard deviation

AUC= area under the plasma concentration curve (extrapolated to infinity for ONIVYDE pegylated liposomal and AUC_{24h} for non-liposomal irinotecan)

C_{max}= maximum plasma concentration

t_{1/2 effective}= effective half-lives

^aValues are estimated from population PK analysis

^bN=353 refers to all the subjects included in the population PK analysis

^cValues are obtained from published data [Schaaf LJ et al. *Clin Cancer Res.* 2006 Jun 15;12:3782-91]

Distribution

Direct measurement of liposomal irinotecan shows that 95% of irinotecan remains liposome-encapsulated during circulation. Non-liposomal irinotecan displays a large volume of distribution (138 l/m²). The volume of distribution of ONIVYDE pegylated liposomal 70 mg/m² was 2.6 l/m², which suggests that ONIVYDE pegylated liposomal is largely confined to vascular fluid.

The plasma protein binding of ONIVYDE pegylated liposomal is negligible (< 0.44% of total irinotecan in ONIVYDE pegylated liposomal). The plasma protein binding of non-liposomal irinotecan is moderate (30% to 68%), and SN-38 is highly bound to human plasma proteins (approximately 95%).

Biotransformation

Irinotecan released from liposome encapsulation follows a similar metabolic pathway reported with non-liposomal irinotecan.

The metabolic conversion of irinotecan to the active metabolite SN-38 is mediated by carboxylesterase enzymes. *In vitro* studies indicate that irinotecan, SN-38 and another metabolite aminopentane carboxylic acid (APC) do not inhibit cytochrome P-450 isozymes. SN-38 is subsequently conjugated predominantly by the enzyme UDP-glucuronosyl transferase 1A1 (UGT1A1) to form a glucuronide metabolite. UGT1A1 activity is reduced in individuals with genetic polymorphisms that lead to reduced enzyme activity such as the UGT1A1*28 polymorphism. In the population pharmacokinetic analysis in patients with ONIVYDE pegylated liposomal using the results of a subset with UGT1A1*28 genotypic testing, in which the analysis adjusted for the lower dose administered to patients homozygous for the UGT1A1*28 allele, patients homozygous (N=14) and non-homozygous (N=244) for this allele had total SN-38 average steady-state concentrations of 1.06 and 0.95 ng/ml, respectively.

Elimination

The disposition of ONIVYDE pegylated liposomal and non-liposomal irinotecan has not been fully elucidated in humans.

The urinary excretion of non-liposomal irinotecan is 11% to 20%; SN-38 < 1%; and SN-38 glucuronide is 3%. The cumulative biliary and urinary excretion of irinotecan and its metabolites (SN-38 and SN-38 glucuronide) over a period of 48 hours following administration of non-liposomal irinotecan in two patients ranged from approximately 25% (100 mg/m²) to 50% (300 mg/m²).

Renal impairment

No dedicated pharmacokinetic study has been conducted in patients with renal impairment. In a population pharmacokinetic analysis, mild-to-moderate renal impairment had no effect on the exposure of total SN-38 after adjusting for BSA. The analysis included 68 patients with moderate (CLcr 30-59 ml/min), 147 patients with mild (CLcr 60-89 ml/min) renal impairment, and 135 patients with normal renal function (CLcr > 90 ml/min). There was insufficient data in patients with severe renal impairment (CLcr < 30 ml/min) to assess its effect on pharmacokinetics (see sections 4.2 and 4.4).

Hepatic impairment

No dedicated pharmacokinetic study has been conducted in patients with hepatic impairment. In a population pharmacokinetic analysis, patients with baseline total bilirubin concentrations of 1-2 mg/dl (n=19) had average steady state concentrations for total SN-38 that were increased by 37% (0.98 [95%CI: 0.94-1.02] and 1.29 [95%CI: 1.11-1.5] ng/ml, respectively) compared to patients with baseline bilirubin concentrations of < 1 mg/dl (n=329); however, there was no effect of elevated ALT/AST concentrations on total SN-38 concentrations. No data are available in patients with total bilirubin more than 2 times the ULN.

Other special populations

Age and gender

The population pharmacokinetic analysis in patients aged 28 to 87 years, of whom 11% were ≥75 years suggests that age had no clinically meaningful effect on the exposure to irinotecan and SN-38.

The population pharmacokinetic analysis in 196 male and 157 female patients suggests that gender had no clinically meaningful effect on the exposure to irinotecan and SN-38 after adjusting for body surface area (BSA).

Ethnicity

The population pharmacokinetic analysis suggest that Asians have 56% lower total irinotecan average steady state concentration (3.93 [95%CI: 3.68-4.2] and 1.74 [95%CI: 1.58-1.93] mg/l, respectively) and 8% higher total SN-38 average steady state concentration (0.97 [95%CI: 0.92-1.03] and 1.05 [95%CI: 0.98-1.11] ng/ml, respectively) than Caucasians.

Pharmacokinetic/pharmacodynamic relationship

In a pooled analysis from 353 patients, higher plasma SN-38 C_{max} was associated with increased likelihood of experiencing neutropenia, and higher plasma total irinotecan C_{max} was associated with increased likelihood of experiencing diarrhoea.

In the clinical trial demonstrating effectiveness of ONIVYDE pegylated liposomal, higher plasma exposures of total irinotecan and SN-38 for patients in the ONIVYDE pegylated liposomal +5-FU/LV treatment arm were associated with longer OS and PFS as well as with higher ORR (objective response rate).

5.3 Preclinical safety data

In single and repeated dose toxicity studies in mice, rats and dogs, the target organs of toxicity were the gastrointestinal tract and the hematologic system. The severity of effects was dose-related and reversible. The no-observed-adverse-effect level (NOAEL) in rats and dogs following 90 min intravenous infusion of ONIVYDE pegylated liposomal once every 3 weeks for 18 weeks was 155 mg/m².

In safety pharmacology studies in dogs, ONIVYDE pegylated liposomal had no effect on cardiovascular, hemodynamic, electrocardiographic, or respiratory parameters at doses up to 18 mg/kg or 360 mg/m². No findings indicative of CNS related toxicity were observed in the repeated dose toxicity studies in rats.

Genotoxic and carcinogenic potential

No genotoxicity studies have been performed with ONIVYDE pegylated liposomal. Non-liposomal irinotecan and SN-38 were genotoxic *in vitro* in the chromosomal aberration test on CHO-cells as well as in the *in vivo* micronucleus test in mice. However, in other studies with irinotecan they have been shown to be devoid of any mutagenic potential in the Ames test.

No carcinogenicity studies have been performed with ONIVYDE pegylated liposomal. For non-liposomal irinotecan, in rats treated once a week during 13 weeks at the maximum dose of 150 mg/m², no treatment related tumours were reported 91 weeks after the end of treatment. Under these conditions, there was a significant linear trend with dose for the incidence of combined uterine horn endometrial stromal polyps and endometrial stromal sarcomas. Due to its mechanism of action, irinotecan is considered a potential carcinogen.

Reproduction toxicity

No reproductive and developmental toxicity studies have been performed with ONIVYDE pegylated liposomal.

Non-liposomal irinotecan was teratogenic in rats and rabbits at doses below the human therapeutic dose. In rats, pups born from treated animals and having external abnormalities showed a decrease in fertility. This was not seen in morphologically normal pups. In pregnant rats there was a decrease in placental weight and in the offspring a decrease in foetal viability and increase in behavioural abnormalities.

Non-liposomal irinotecan caused atrophy of male reproductive organs both in rats and dogs after multiple daily doses of 20 mg/kg and 0.4 mg/kg, respectively. These effects were reversible upon cessation of treatment.

6. PHARMACEUTICAL PARTICULARS

6.1 List of excipients

Liposome forming lipids

1,2-distearoyl-sn-glycero-3-phosphocholine (DSPC)

Cholesterol

N-(carbonyl-methoxypolyethylene glycol-2000)-1, 2-distearoyl-sn-glycero-3-phosphoethanolamine (MPEG-2000-DSPE)

Other excipients

Sucrose octasulphate

2- [4- (2-Hydroxyethyl)piperazin-1-yl] ethanesulfonic acid (HEPES buffer)

Sodium chloride

Water for injections

6.2 Incompatibilities

ONIVYDE pegylated liposomal must not be mixed with other medicinal products except those mentioned in section 6.6.

6.3 Shelf life

Unopened vial

3 years.

After dilution

Chemical and physical stability for the diluted dispersion for infusion has been demonstrated at 15-25°C for up to 6 hours or in the refrigerator (2°C-8°C) for no more than 24 hours.

From a microbiological point of view, the product should be used immediately. If not used immediately, in-use storage times and conditions are the responsibility of the user.

6.4 Special precautions for storage

Store in a refrigerator (2°C-8°C).

Do not freeze.

Keep the vial in the outer carton in order to protect from light.

For storage conditions after dilution of the medicinal product, see section 6.3.

6.5 Nature and contents of container

Type I glass vial with a grey chlorobutyl stopper and an aluminium seal with a flip-off cap, containing 10 ml of concentrate.

Each pack contains one vial.

6.6 Special precautions for disposal and other handling

ONIVYDE pegylated liposomal is a cytotoxic medicinal product, and caution should be exercised in handling it. The use of gloves, goggles and protective clothing when handling or administering ONIVYDE pegylated liposomal is recommended. If the dispersion contacts the skin, the skin should be washed immediately and thoroughly with soap and water. If the dispersion contacts mucous

membranes, they should be flushed thoroughly with water. Pregnant staff should not handle ONIVYDE pegylated liposomal considering the cytotoxic nature of the medicinal product.

Preparation of the dispersion and administration

ONIVYDE pegylated liposomal is supplied as a sterile liposomal dispersion at a concentration of 4.3 mg/ml and must be diluted prior to administration. Dilute with 5% glucose solution for injection or sodium chloride 9 mg/ml (0.9%) solution for injection to prepare a dispersion of the appropriate dose of ONIVYDE pegylated liposomal diluted to a final volume of 500 ml. Mix the diluted dispersion by gentle inversion. The diluted dispersion is clear to slightly white to slightly opalescent and free from visible particles.

ONIVYDE pegylated liposomal should be administered before LV followed by 5-FU. ONIVYDE pegylated liposomal must not be administered as a bolus injection or an undiluted dispersion.

Aseptic techniques must be followed during the preparation of the infusion. ONIVYDE pegylated liposomal is for single use only.

Care should be taken to avoid extravasation, and the infusion site should be monitored for signs of inflammation. Should extravasation occur, flushing the site with sodium chloride 9 mg/ml (0.9%) solution for injection and/or sterile water and applications of ice are recommended.

For storage conditions after dilution of the medicinal product, see section 6.3.

Any unused medicinal product or waste material should be disposed of in accordance with local requirements.

7. MARKETING AUTHORISATION HOLDER

Les Laboratoires Servier
50, rue Carnot
92284 Suresnes cedex
France

8. MARKETING AUTHORISATION NUMBER(S)

EU/1/16/1130/001

9. DATE OF FIRST AUTHORISATION/RENEWAL OF THE AUTHORISATION

Date of first authorisation: 14 October 2016

10. DATE OF REVISION OF THE TEXT

Detailed information on this medicinal product is available on the website of the European Medicines Agency <http://www.ema.europa.eu>.

ANNEX II

- A. MANUFACTURER(S) RESPONSIBLE FOR BATCH RELEASE**
- B. CONDITIONS OR RESTRICTIONS REGARDING SUPPLY AND USE**
- C. OTHER CONDITIONS AND REQUIREMENTS OF THE MARKETING AUTHORISATION**
- D. CONDITIONS OR RESTRICTIONS WITH REGARD TO THE SAFE AND EFFECTIVE USE OF THE MEDICINAL PRODUCT**

A. MANUFACTURER(S) RESPONSIBLE FOR BATCH RELEASE

Name and address of the manufacturer(s) responsible for batch release

Les Laboratoires Servier Industrie
905 Route de Saran
45520 Gidy
France

B. CONDITIONS OR RESTRICTIONS REGARDING SUPPLY AND USE

Medicinal product subject to restricted medical prescription (see Annex I: Summary of Product Characteristics, section 4.2).

C. OTHER CONDITIONS AND REQUIREMENTS OF THE MARKETING AUTHORISATION

- **Periodic safety update reports (PSURs)**

The requirements for submission of **PSURs** for this medicinal product are set out in the list of Union reference dates (EURD list) provided for under Article 107c(7) of Directive 2001/83/EC and any subsequent updates published on the European medicines web-portal.

D. CONDITIONS OR RESTRICTIONS WITH REGARD TO THE SAFE AND EFFECTIVE USE OF THE MEDICINAL PRODUCT

- **Risk management plan (RMP)**

The marketing authorisation holder (MAH) shall perform the required pharmacovigilance activities and interventions detailed in the agreed RMP presented in Module 1.8.2 of the Marketing Authorisation and any agreed subsequent updates of the RMP.

An updated RMP should be submitted:

- At the request of the European Medicines Agency;
- Whenever the risk management system is modified, especially as the result of new information being received that may lead to a significant change to the benefit/risk profile or as the result of an important (pharmacovigilance or risk minimisation) milestone being reached.

ANNEX III
LABELLING AND PACKAGE LEAFLET

A. LABELLING

PARTICULARS TO APPEAR ON THE OUTER PACKAGING

OUTER CARTON

1. NAME OF THE MEDICINAL PRODUCT

ONIVYDE pegylated liposomal 4.3 mg/ml concentrate for dispersionfor infusion
irinotecan

2. STATEMENT OF ACTIVE SUBSTANCE

One 10 ml vial of concentrate contains 43 mg irinotecan anhydrous free base (as irinotecan sucrosolate salt in a pegylated liposomal formulation).

3. LIST OF EXCIPIENTS

Excipients:
DSPC
Cholesterol
MPEG-2000-DSPE
Sucrose octasulphate
HEPES buffer
Sodium chloride
Water for injections
See leaflet for further information.

4. PHARMACEUTICAL FORM AND CONTENTS

Concentrate for dispersionfor infusion.
43 mg/10 ml
1 vial

5. METHOD AND ROUTE OF ADMINISTRATION

For single use only.
Read the package leaflet before use.
Intravenous use after dilution.

6. SPECIAL WARNING THAT THE MEDICINAL PRODUCT MUST BE STORED OUT OF THE SIGHT AND REACH OF CHILDREN

Keep out of the sight and reach of children.

7. OTHER SPECIAL WARNING(S), IF NECESSARY

Onivyde pegylated liposomal (irinotecan) is not equivalent to non-liposomal formulations. Do not interchange.

8. EXPIRY DATE

EXP:

9. SPECIAL STORAGE CONDITIONS

Store in a refrigerator.

Do not freeze.

Keep the vial in the outer carton in order to protect from light.

10. SPECIAL PRECAUTIONS FOR DISPOSAL OF UNUSED MEDICINAL PRODUCTS OR WASTE MATERIALS DERIVED FROM SUCH MEDICINAL PRODUCTS, IF APPROPRIATE

Cytotoxic: handle with caution and special disposal.

11. NAME AND ADDRESS OF THE MARKETING AUTHORISATION HOLDER

Les Laboratoires Servier

50, rue Carnot

92284 Suresnes cedex

France

12. MARKETING AUTHORISATION NUMBER(S)

EU/1/16/1130/001

13. BATCH NUMBER

Lot:

14. GENERAL CLASSIFICATION FOR SUPPLY**15. INSTRUCTIONS ON USE****16. INFORMATION IN BRAILLE**

Justification for not including Braille accepted.

17. UNIQUE IDENTIFIER – 2D BARCODE

2D barcode carrying the unique identifier included.

18. UNIQUE IDENTIFIER – HUMAN READABLE DATA

PC
SN
NN

MINIMUM PARTICULARS TO APPEAR ON SMALL IMMEDIATE PACKAGING UNITS

VIAL LABEL

1. NAME OF THE MEDICINAL PRODUCT AND ROUTE(S) OF ADMINISTRATION

ONIVYDE pegylated liposomal 4.3 mg/ml concentrate for dispersionfor infusion
irinotecan
IV use after dilution

2. METHOD OF ADMINISTRATION

3. EXPIRY DATE

EXP:

4. BATCH NUMBER

Lot:

5. CONTENTS BY WEIGHT, BY VOLUME OR BY UNIT

43mg/10 ml

6. OTHER

B. PACKAGE LEAFLET

Package leaflet: Information for the user

ONIVYDE pegylated liposomal 4.3 mg/ml concentrate for dispersion for infusion irinotecan

Read all of this leaflet carefully before you start using this medicine because it contains important information for you.

- Keep this leaflet. You may need to read it again.
- If you have any further questions, ask your doctor or nurse.
- If you get any side effects, talk to your doctor or nurse. This includes any possible side effects not listed in this leaflet. See section 4.

What is in this leaflet

1. What ONIVYDE pegylated liposomal is and what it is used for
2. What you need to know before you use ONIVYDE pegylated liposomal
3. How ONIVYDE pegylated liposomal is used
4. Possible side effects
5. How to store ONIVYDE pegylated liposomal
6. Contents of the pack and other information

1. What ONIVYDE pegylated liposomal is and what it is used for

What ONIVYDE pegylated liposomal is and how it works

ONIVYDE pegylated liposomal is a cancer medicine that contains the active substance irinotecan. This active substance is held in tiny lipid (fatty) particles called liposomes.

Irinotecan belongs to a group of cancer medicines called ‘topoisomerase inhibitors’. It blocks an enzyme called topoisomerase I, which is involved in the division of cell DNA. This prevents the cancer cells from multiplying and growing, and they eventually die.

The liposomes are expected to accumulate within the tumour and release the medicine slowly over time, thereby allowing it to act for longer.

What ONIVYDE pegylated liposomal is used for

ONIVYDE pegylated liposomal is used to treat adult patients with metastatic pancreatic cancer (cancer of the pancreas that has already spread elsewhere in the body) whose previously cancer treatment included a medicine called gemcitabine. ONIVYDE pegylated liposomal is used in combination with other cancer medicines, called 5-fluorouracil and leucovorin.

If you have any questions about how ONIVYDE pegylated liposomal works or why this medicine has been prescribed for you, ask your doctor.

2. What you need to know before you use ONIVYDE pegylated liposomal

Follow carefully all instructions given to you by your doctor. They may differ from the general information contained in this leaflet.

Do not use ONIVYDE pegylated liposomal

- if you have a history of a severe allergy to irinotecan, or any of the other ingredients of this medicine (listed in section 6).
- if you are breastfeeding

Warnings and precautions

Talk to your doctor or nurse before you are given ONIVYDE pegylated liposomal

- if you have ever had any liver problems or jaundice
- if you have ever had lung disease or have previously received medicines (colony stimulating factors) to increase your blood count or radiation therapy
- if you are taking other medicines (see section “Other medicines and ONIVYDE pegylated liposomal”)
- if you are planning to have a vaccination as many vaccinations must not be given during chemotherapy
- if you are on a controlled sodium diet as this medicine contains sodium.

Talk to your doctor or nurse immediately during treatment with ONIVYDE pegylated liposomal

- if you feel sudden shortness of breath, flushing, headache, skin rash or hives (itchy rash with swollen red bumps on the skin that appear suddenly), itching, swelling around the eyes, tightness in the chest or throat during or shortly after your infusion
- if you experience fever, chills or other symptoms of infection
- if you get diarrhoea with frequent liquid stools and cannot control this after 12 to 24 hours of treatment (see below)
- if you get breathlessness or cough.
- if you experience signs or symptoms of a blood clot, like sudden pain and swelling in a leg or arm, sudden onset of coughing, chest pain or difficulty breathing.

What to do in case of diarrhoea

As soon as the first liquid stool occurs, start drinking large volumes of rehydration fluids (e.g. water, soda water, fizzy drinks, soup) to avoid losing too much liquid and salts from your body. Contact your doctor immediately to give you a suitable treatment. Your doctor may give you a medicine which contains loperamide to begin treatment at home but it must not be used for longer than 48 consecutive hours. If loose stools persist, contact your doctor.

Blood tests and medical examinations

Before you start treatment with ONIVYDE pegylated liposomal, your doctor will perform blood tests (or other medical examinations) to determine the best starting dose for you. You will need to have further (blood or other) tests during treatment so that your doctor can monitor your blood cells and assess how you are responding to the treatment. Your doctor may need to adjust the dose or stop treatment.

Children and adolescents

ONIVYDE pegylated liposomal is not recommended for use in adolescents and children below the age of 18 years.

Other medicines and ONIVYDE pegylated liposomal

Tell your doctor if you are taking, have recently taken or might take any other medicines. It is especially important that you tell your doctor if you have been given irinotecan in any form earlier.

ONIVYDE pegylated liposomal must not be used instead of other medicines containing irinotecan because it behaves differently when it is contained in the liposomes than when it is given in its free form.

It is also especially important that you tell your doctor if you are also taking the following medicines, since they reduce the availability of irinotecan in your body:

- phenytoin, phenobarbital or carbamazepine (medicines used to treat convulsions and falls)
- rifampicin and rifabutin (medicines used to treat tuberculosis)
- St. John's wort (a plant based medicine used to treat depression and low mood)
- as ONIVYDE pegylated liposomal should not be given to you together with these medicines.

It is especially important that you tell your doctor if you are also taking the following medicines, since they increase the availability of irinotecan in your body:

- ketoconazole, itraconazole or voriconazole (medicines used to treat fungal infections)
- clarithromycin (an antibiotic medicine used to treat bacterial infections)
- indinavir, lopinavir, nelfinavir, ritonavir, saquinavir, atazanavir (medicines against HIV infection)
- regorafenib (a medicine against certain forms of cancer)
- telaprevir (a medicine used to treat a liver disease called hepatitis C)
- nefazodone (a medicine used to treat depression, low mood)
- gemfibrozil (medicine used to treat high fat levels in the blood)

ONIVYDE pegylated liposomal with food and drink

Avoid eating grapefruits and drinking grapefruit juice while you are receiving ONIVYDE pegylated liposomal as it may increase the availability of the active substance of ONIVYDE pegylated liposomal in your body.

Pregnancy and breast-feeding

You should not be given ONIVYDE pegylated liposomal if you are pregnant as it may harm the baby. Tell your doctor if you are or think you may be pregnant. Ask your doctor for advice if you are planning to have a baby. If you are given ONIVYDE pegylated liposomal you should not breast-feed until one month after the last dose.

During your ONIVYDE pegylated liposomal treatment and one month after you should choose an effective birth control method which suits you, to prevent pregnancy in this period of time. Males should use condoms during ONIVYDE pegylated liposomal treatment and 4 months thereafter.

Tell your doctor if you are breast-feeding. You must not be given ONIVYDE pegylated liposomal if you are breast-feeding as this may be harmful to your baby.

Driving and using machines

ONIVYDE pegylated liposomal may influence your ability to drive and use machines (as you may be sleepy, dizzy and exhausted with the use of ONIVYDE pegylated liposomal). You should avoid driving, using machines or performing other tasks that need full attention if you feel sleepy, dizzy and exhausted.

ONIVYDE pegylated liposomal contains sodium

One millilitre of this medicine contains 0.144 mmol (3.31 mg) sodium—keep this in mind if you are on a controlled sodium diet.

3. How ONIVYDE pegylated liposomal is used

ONIVYDE pegylated liposomal must only be given by healthcare professionals trained in giving anticancer medicines

Carefully follow all instructions given to you by your doctor or nurse.

Your doctor will decide upon the doses you will receive.

ONIVYDE pegylated liposomal is given as a drip (infusion) into a vein, which should take at least 90 minutes and should be given as a single dose.

After you have been given ONIVYDE pegylated liposomal you will be given two other medicines, leucovorin and 5-fluorouracil.

The treatment will be repeated every two weeks.

In certain cases, lower doses or longer dosing intervals may be required.

You may receive pre-medication against nausea and vomiting. If you have experienced sweating, abdominal cramping and salivation together with early frequent and liquid stools in previous treatments with ONIVYDE pegylated liposomal, you may receive additional medicines before ONIVYDE pegylated liposomal to prevent or reduce this in the following treatment cycles.

If you have any further questions on the use of this medicine, ask your doctor or nurse.

4. Possible side effects

Like all medicines, this medicine can cause side effects, although not everybody gets them. It is important that you are aware of what these side effects may be.

Your doctor may also prescribe other medicines to help control your side effects.

Tell your doctor or nurse about any of the following serious side effects straight away:

- if you experience sudden shortness of breath, flushing, nausea, headache, skin rash or hives (itchy rash with swollen red bumps on the skin that appear suddenly), itching, swelling around the eyes, tightness in the chest or throat during the infusion or shortly after it (as the infusion may need to be stopped and you may need to be treated or observed for the side effects)
- if you get fever, chills and signs of an infection (as this might require immediate treatment)
- if you have severe persistent diarrhoea (liquid and frequent stools)—see section 2

The following side effects may occur:

Very common (may affect more than 1 in 10 people)

- Low levels of white blood cells (neutropenia and leukopenia), Low level of red blood cells (anaemia)
- Low level of blood platelets (thrombocytopenia)
- Diarrhoea (loose or watery and frequent stools)
- Nausea and vomiting
- Pain in the stomach or in the gut area
- Sore mouth
- Loss of weight
- Loss of appetite
- Loss of body fluid (dehydration)
- Low level of salts (electrolytes) in the body (e.g. of potassium, magnesium)
- Unusual hair loss
- Tiredness
- Dizziness
- Swelling and fluid retention in the soft tissues (peripheral oedema)

- Soreness and swelling of the digestive tract lining (mucosal inflammation)
- Fever
- Generalised weakness

Common (may affect up to 1 in 10 people)

- Chills
- Infections, for example fungal infections in the mouth (oral candidiasis), fever with low counts of white blood cells (febrile neutropenia), infections related to the administration of the product into a vein
- Inflammation of the stomach and the guts (gastroenteritis)
- Systemic body inflammation, caused by infection (sepsis)
- Potentially life-threatening complication of whole body inflammation (septic shock)
- Infection of the lungs (pneumonia)
- Low level of white blood cells subtype, called lymphocytes with important function for the immune system (lymphopenia)
- Decrease in some salts (electrolytes) in the body (e.g. phosphate, sodium)
- Low blood sugar (hypoglycaemia)
- Sleeplessness
- Bad taste in the mouth
- A syndrome called cholinergic syndrome with sweating, salivation and abdominal cramping
- Low blood pressure (hypotension)
- Formation of a blood clot in a deep vein (deep vein thrombosis) or blockage of the main artery of the lung or one of its branches (pulmonary embolism), or blockage due to a blood clot elsewhere in the blood stream (embolism)
- Voice impairment, hoarse or excessively breathy voice
- Shortness of breath
- Inflammation in the gut
- Piles (haemorrhoids)
- Increases in liver enzymes (alanine aminotransferase or aspartate aminotransferase) in laboratory blood tests
- Increase in bilirubin levels (an orange-yellow pigment, waste product of the normal breakdown of the red blood cells) in other laboratory measurements related to liver function
- Increase in other laboratory measurements (increased international normalized ratio) related to the blood clotting system function
- Abnormally low blood levels of albumin (major protein in the body)
- Sudden problems with kidney function which may lead to rapid deterioration or loss of the kidney function
- Abnormal reaction to the infusion causing symptoms like shortness of breath, flushing, headache, tightness in the chest or throat
- Abnormal fluid retention in the body causing swelling in the affected tissues (oedema)

Uncommon (may affect up to 1 in 100 people)

- Systemic body inflammation, caused by infection of the gall bladder and bile ducts (biliary sepsis)
- Allergic reaction to ONIVYDE pegylated liposomal (the active substance or the excipients)
- Diminished availability of oxygen to the body tissues
- Inflammation of the oesophagus (food pipe)
- Formation or presence of a blood clot within a blood vessel – vein or artery (thrombosis)
- Inflammation of the lining of the rectum (the end of the large intestine)
- Type of rash, characterised by appearance of a flat, red area on the skin covered with bumps (maculo-papular rash)
- Change in the colour of the nail plates

Reporting of side effects

If you get any side effects, talk to your doctor or nurse. This includes any possible side effects not listed in this leaflet. You can also report side effects directly via the national reporting system listed in

[Appendix V](#). By reporting side effects you can help provide more information on the safety of this medicine.

5. How to store ONIVYDE pegylated liposomal

Keep this medicine out of the sight and reach of children.

Do not use this medicine after the expiry date which is stated on the carton and vial after “EXP”. The expiry date refers to the last day of that month.

Store in a refrigerator (2°C - 8°C).

Do not freeze.

Keep the vial in the outer carton in order to protect from light.

Once the concentrate has been diluted for infusion with 5% glucose solution for injection or sodium chloride 9 mg/ml (0.9%) solution for injection, the dispersion should be used as soon as possible, but may be stored at ambient temperature (15°C to 25°C) for up to 6 hours. The diluted dispersion for infusion can be stored in the refrigerator (2°C - 8°C) for no more than 24 hours prior to use. It must be protected from light, and it must not be frozen.

Do not throw away this medicine via wastewater or household waste. Ask your pharmacist how to throw away medicines you no longer use. These measures will help protect the environment.

6. Contents of the pack and other information

What ONIVYDE pegylated liposomal contains

- The active substance is irinotecan. One 10 ml vial of concentrate contains 43 mg irinotecan anhydrous free base (as sucrosolate salt in a pegylated liposomal formulation).
- The other ingredients are: 1,2-distearoyl-sn-glycero-3-phosphocholine (DSPC); cholesterol, N-(carbonyl-methoxypolyethylene glycol-2000)-1,2-distearoyl-sn-glycero-3-phosphoethanolamine (MPEG-2000-DSPE); Sucrose octasulphate; 2- [4- (2-Hydroxyethyl)piperazin-1-yl]ethanesulfonic acid (HEPES buffer); sodium chloride and water for injections. ONIVYDE pegylated liposomal contains sodium, if you are on a controlled sodium diet, see section 2.

What ONIVYDE pegylated liposomal looks like and contents of the pack

ONIVYDE pegylated liposomal is supplied as a white to slightly yellow opaque isotonic liposomal dispersion in a glass vial.

Each pack contains one vial with 10 ml of concentrate.

Marketing Authorisation Holder

Les Laboratoires Servier
50, rue Carnot
92284 Suresnes cedex
France

Manufacturer

Les Laboratoires Servier Industrie
905 Route de Saran
45520 Gidy
France

For any information about this medicine, please contact the local representative of the Marketing Authorisation Holder:

België/Belgique/Belgien

S.A. Servier Benelux N.V.
Tél/Tel: +32 (0)2 529 43 11

България

Сервие Медикал ЕООД
Тел.: +359 2 921 57 00

Česká republika

Servier s.r.o.
Tel: +420 222 118 111

Danmark

Servier Danmark A/S
Tlf: +45 36 44 22 60

Deutschland

Servier Deutschland GmbH
Tel: +49 (0)89 57095 01

Eesti

Servier Laboratories OÜ
Tel: +372 664 5040

Ελλάδα

ΣΕΡΒΙΕ ΕΛΛΑΣ ΦΑΡΜΑΚΕΥΤΙΚΗ ΕΠΕ
Τηλ: +30 210 939 1000

España

Laboratorios Servier S.L.
Tel: +34 91 748 96 30

France

Les Laboratoires Servier
Tél: +33 (0)1 55 72 60 00

Hrvatska

Servier Pharma, d. o. o.
Tel: +385 (0)1 3016 222

Ireland

Servier Laboratories (Ireland) Ltd.
Tel: +353 (0)1 663 8110

Ísland

Servier Laboratories
c/o Icepharma hf
Sími: +354 540 8000

Italia

Servier Italia S.p.A.
Tel: +39 (06) 669081

Lietuva

UAB "SERVIER PHARMA"
Tel: +370 (5) 2 63 86 28

Luxembourg/Luxemburg

S.A. Servier Benelux N.V.
Tel: +32 (0)2 529 43 11

Magyarország

Servier Hungaria Kft.
Tel: +36 1 238 7799

Malta

V.J. Salomone Pharma Ltd
Tel: +356 21 22 01 74

Nederland

Servier Nederland Farma B.V.
Tel: +31 (0)71 5246700

Norge

Servier Danmark A/S
Tlf: +45 36 44 22 60

Österreich

Servier Austria GmbH
Tel: +43 (1) 524 39 99

Polska

Servier Polska Sp. z o.o.
Tel: +48 (0) 22 594 90 00

Portugal

Servier Portugal, Lda
Tel: +351 21 312 20 00

România

Servier Pharma SRL
Tel: +40 21 528 52 80

Slovenija

Servier Pharma d. o. o.
Tel: +386 (0)1 563 48 11

Slovenská republika

Servier Slovensko spol. s r.o.
Tel: +421 2 5920 41 11

Suomi/Finland

Servier Finland Oy
P. /Tel: +358 (0)9 279 80 80

Κύπρος
CA Papaellinas Ltd.
Τηλ: + 357 22 741 741

Sverige
Servier Sverige AB
Tel : +46 (0)8 522 508 00

Latvija
SIA Servier Latvia
Tel: + 371 67502039

United Kingdom
Servier Laboratories Ltd
Tel: +44 (0)1753 666409

This leaflet was last revised in

Detailed information on this medicine is available on the European Medicines Agency web site:
<http://www.ema.europa.eu>.

The following information is intended for healthcare professionals only:

How to prepare and administer ONIVYDE pegylated liposomal

- ONIVYDE pegylated liposomal is supplied as a sterile liposomal dispersion at a concentration of 4.3 mg/ml and must be diluted prior to administration. Dilute with 5% glucose solution for injection or sodium chloride 9 mg/ml (0.9%) solution for injection to prepare a dispersion of the appropriate dose of ONIVYDE pegylated liposomal diluted to a final volume of 500 ml. Mix diluted dispersion by gentle inversion.
- ONIVYDE pegylated liposomal should be administered before leucovorin followed by 5-fluorouracil. ONIVYDE pegylated liposomal must not be administered as a bolus injection or an undiluted dispersion.
- Aseptic techniques must be followed during the preparation of the infusion. ONIVYDE pegylated liposomal is for single use only.
- From a microbiological point of view, the product should be used as soon as possible after dilution. The diluted dispersion for infusion can be stored at ambient temperature (15°C to 25°C) for up to 6 hours or in the refrigerator (2°C - 8°C) for no more than 24 hours prior to use. It must be protected from light, and it must not be frozen.
- Care should be taken to avoid extravasation, and the infusion site should be monitored for signs of inflammation. Should extravasation occur, flushing the site with sodium chloride 9 mg/ml (0.9%) solution for injection and/or sterile water and applications of ice are recommended.

How to handle and dispose of ONIVYDE pegylated liposomal

- ONIVYDE pegylated liposomal is a cytotoxic medicinal product and caution should be exercised in handling it. The use of gloves, goggles and protective clothing when handling or administering ONIVYDE pegylated liposomal is recommended. If the dispersion contacts the skin, the skin should be washed immediately and thoroughly with soap and water. If the dispersion contacts mucous membranes, they should be flushed thoroughly with water. Pregnant staff should not handle ONIVYDE pegylated liposomal considering the cytotoxic nature of the medicinal product.
- Any unused medicinal product or waste material should be disposed of in accordance with local requirements.