

2 YEARS OF EXPERIENCE

DARWIN EU®: Making health data count

DARWIN EU® (Data Analysis and Real-World Interrogation Network) generates real-world evidence (RWE) to support EMA committees and national regulators in the EU in making more data-driven decisions on medicines. RWE comes from the analysis of real-world data, health data collected in routine care settings. It complements data from clinical trials.



How do we use data for the benefit of patients?

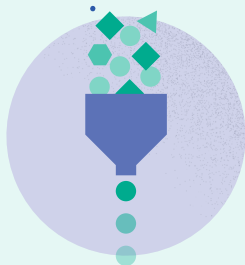
Collecting data

Doctors, pharmacists, researchers and other bodies collect data about patients' health and experience when delivering care. The data come in different formats.



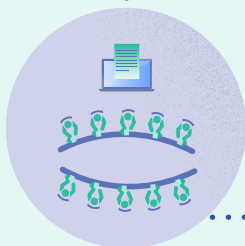
Common data model

A common data model (OMOP) transforms all data into the same format to be analysed using the same analytical code.



Decision-making

EMA committees and EU regulators use the RWE reports generated to complement other evidence when assessing medicines.



Data partners

DARWIN EU® data partners hold or access data through hospitals, registries, insurance claims, biobanks and other sources.



Compiling reports

Experts use standardised analytical methods to produce study reports based on the data analysis.



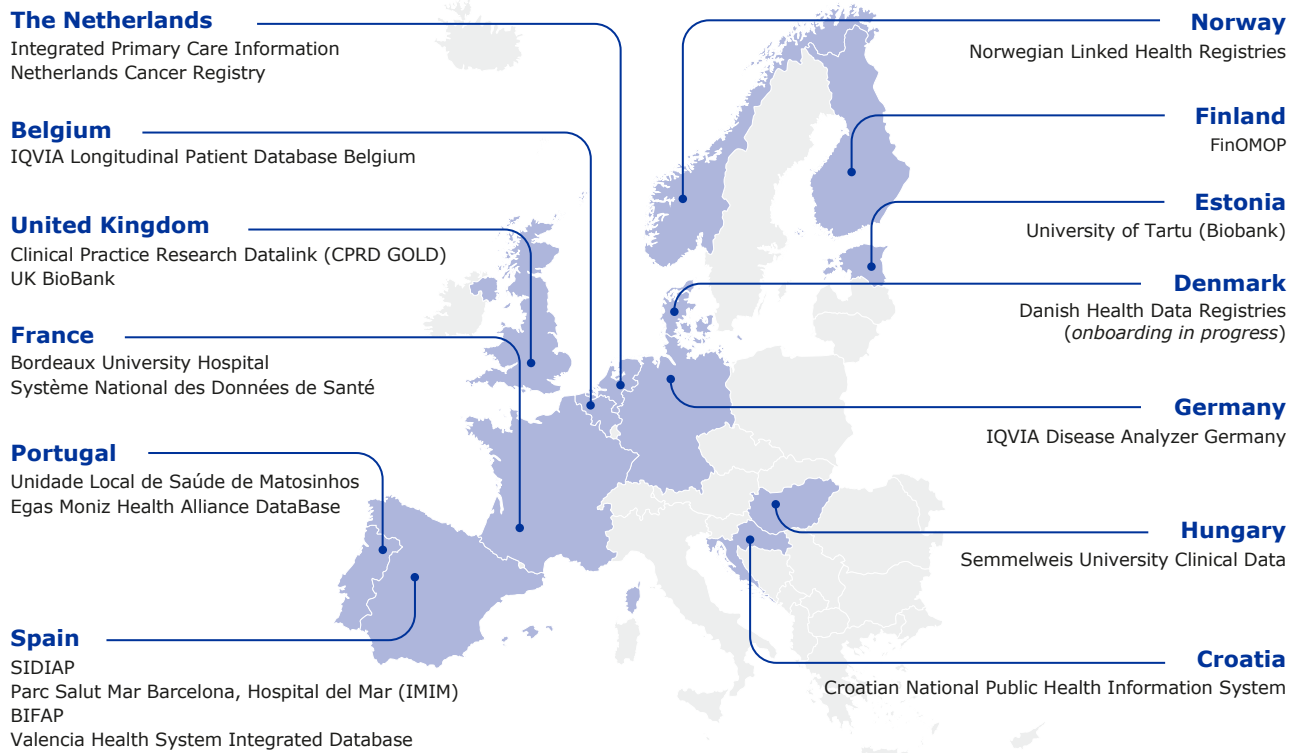
Data-driven regulation

More data-driven regulation will help to deliver safer and more effective medicines to patients.



How do we access data from across Europe?

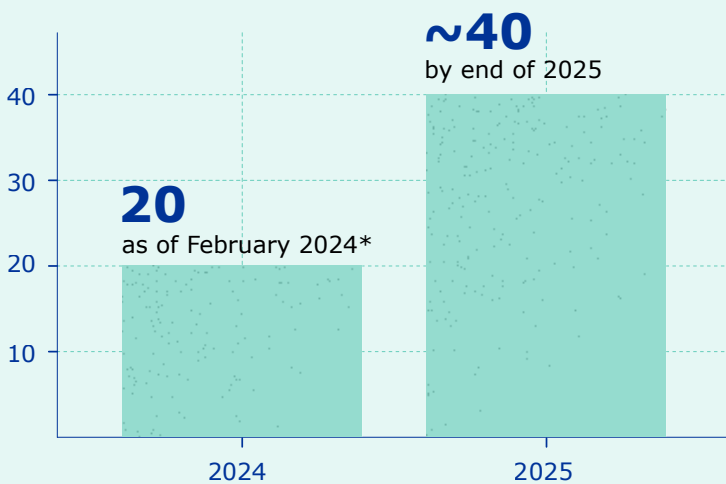
Data partners (DPs) provide DARWIN EU® with anonymised data on patients. The use of the common data model and standardised analysis of the data, performed locally by the DPs, enable rapid conduct of studies.



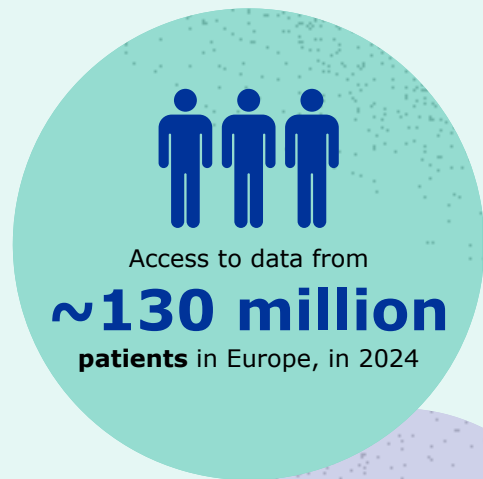
Key figures

Since 2022, 20 data partners have been onboarded. In 2024 and 2025, additional ten data partners per year will join the network.

Data partners



* in 13 European countries



[DARWIN EU® webpage](#)

[Become a data partner](#)

[See studies](#)