



EUROPEAN MEDICINES AGENCY
SCIENCE MEDICINES HEALTH

Update 1 on EMA's move to EMA building

Annual PCWP/HCPWP meeting with all eligible organisations, 20 November 2019

Tiago Freitas, Head of Facilities Support Service

An agency of the European Union





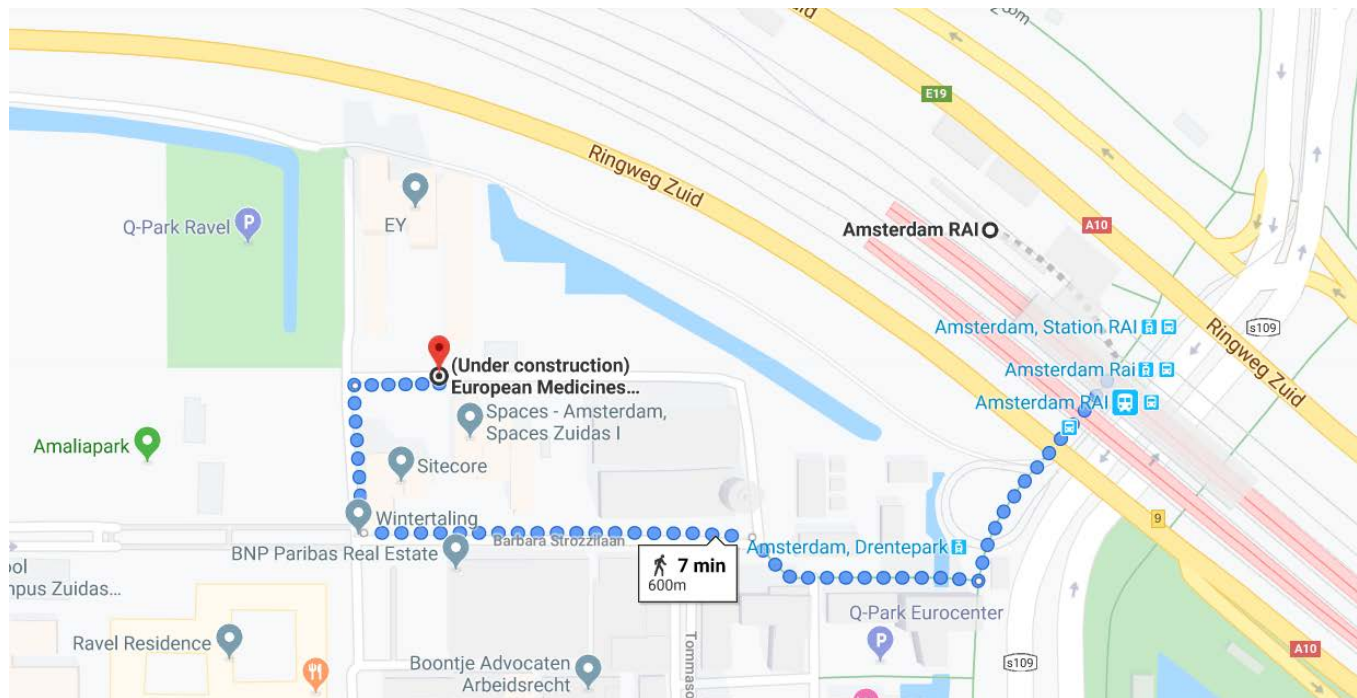
EMA building







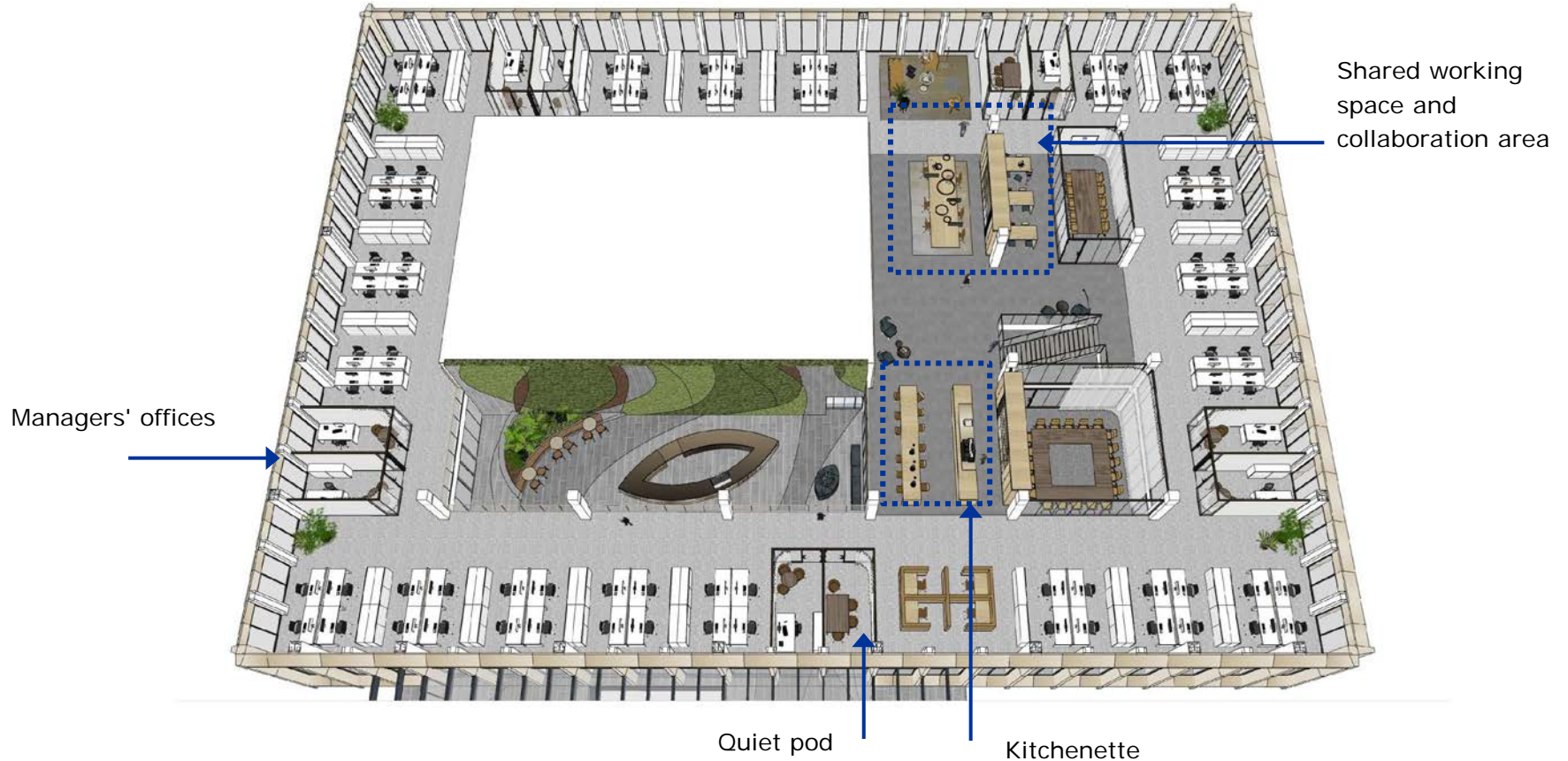
Getting to EMA from RAI station



Standard office floor layout



EUROPEAN MEDICINES AGENCY





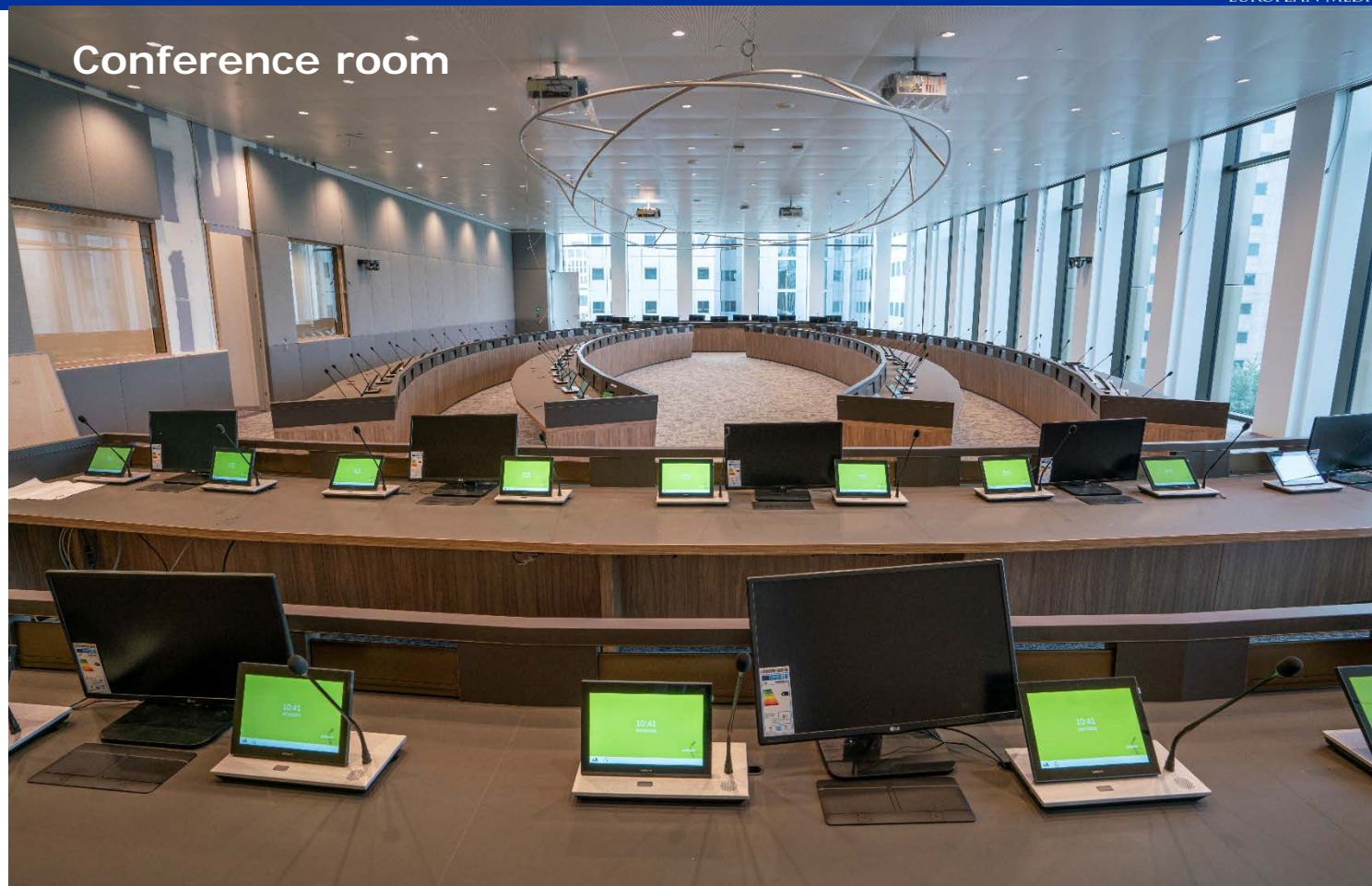
Reception







Conference room





Delegates lounge







Coffee bar with entrance to the Delegates Lounge



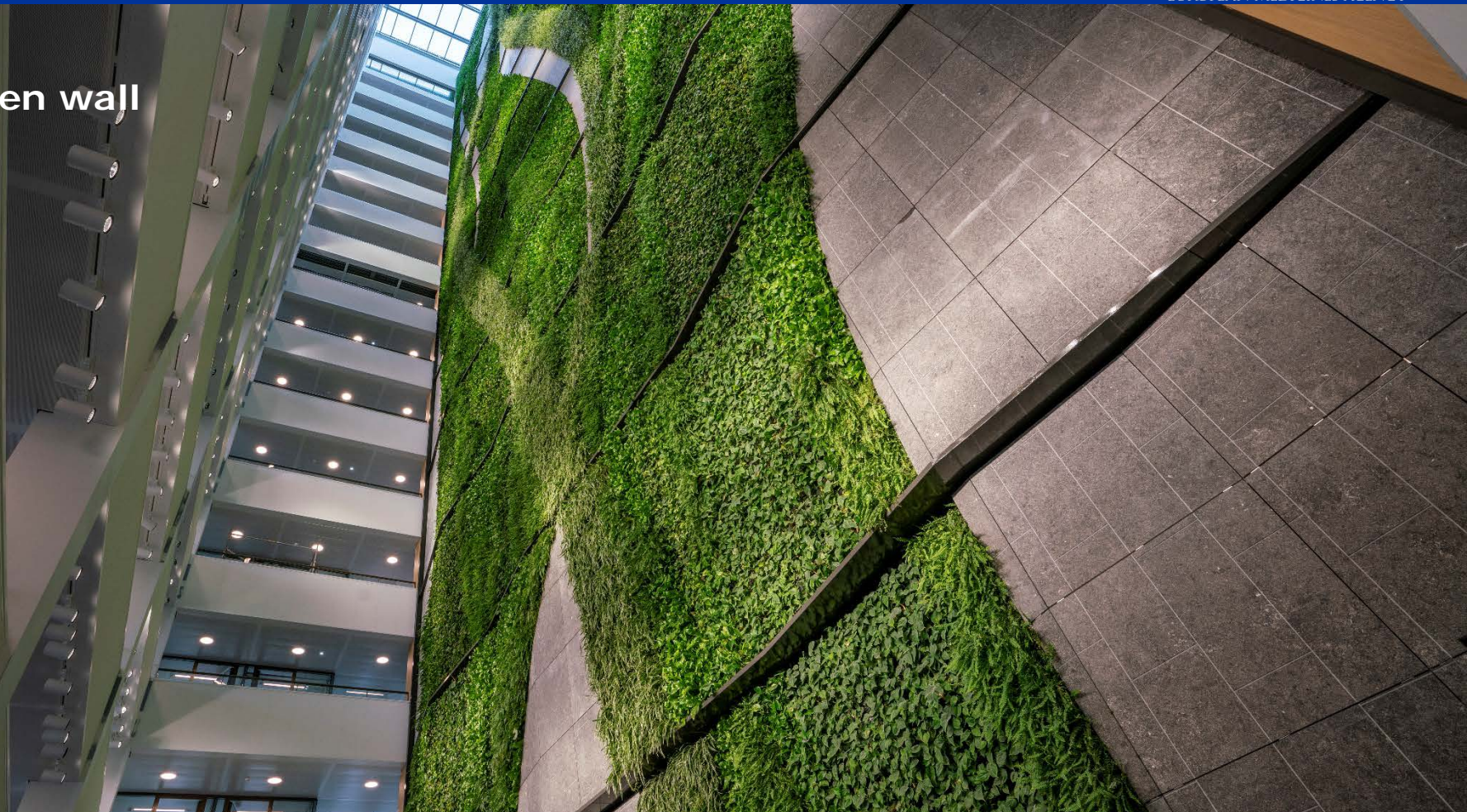


Coffee Bar





Green wall





---- BREEAM Excellent rating and Bijna Energie Neutraal Gebouw –
50% of the energy is obtained from sustainable sources



---- **6** lifts serving all floors, **3** lifts serving conference floors and
1 service lift



---- Restaurant with capacity of **304** people



---- **1** auditorium with 250+ seats capacity



---- **7** conference rooms for 40-122 people capacity

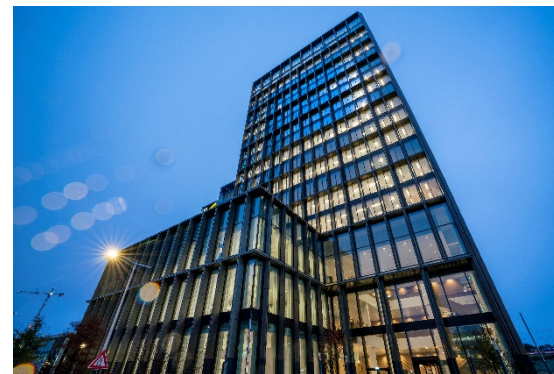
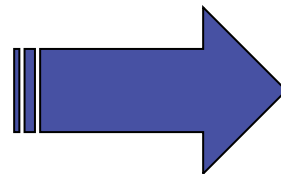


---- **2** first aid/nursing rooms

- Drop-off point and parking bays for persons with mobility impairment in front of the building
- Step-free access to all floors via the elevators
- Toilets for persons with mobility impairment on each floor
- ITS compliance to wayfinding information on digital screens (colour contrast, lighting, etc.)
- Hearing loop for hearing impaired persons available during conferences and meetings
- All machines compliant with ITS standards (including coffee machines, vending machines, etc.)



Moving from Spark to EMA building





Upcoming: Orientation guide - EMA building



- Orientation guide for patients and healthcare professionals in development
- Same structure of the guide for Spark: information about the EMA building, how to reach it, etc.
- Planned distribution: December 2019



Any questions?
