



EUROPEAN MEDICINES AGENCY  
SCIENCE MEDICINES HEALTH

## **EPCTRI: Paediatrics in 2016. Roadmap of European Strategy Forum for Research Infrastructure (ESFRI)**

Mark Turner  
EnprEMA Co-Chair



# Topics

Road Map

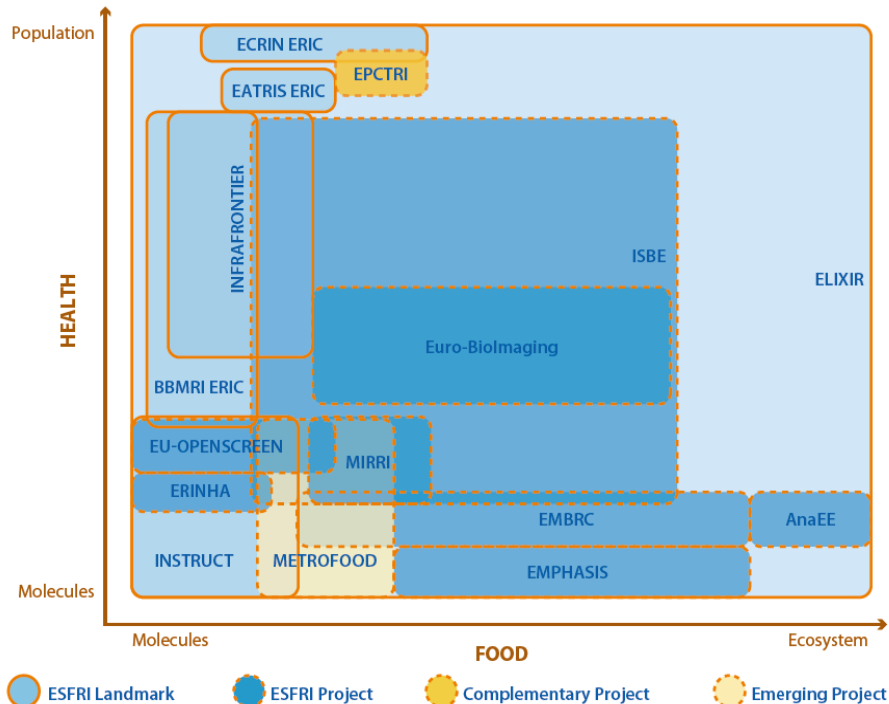
PedCRIN

CORBEL

Next steps

# ESFRI 2016 Road Map

**Figure 2:** the indicative position of ESFRI RIs relative to the different levels of organisation in the Health and Food domain.



# ECRIN model : distributed infrastructure

Coordinating services provided by national partners

---

- **National partner :**  
network of clinical trial units (CTUs) able to manage trials in the country
- **National hub**
- **European Correspondent** hosted in national hub (ECRIN staff)



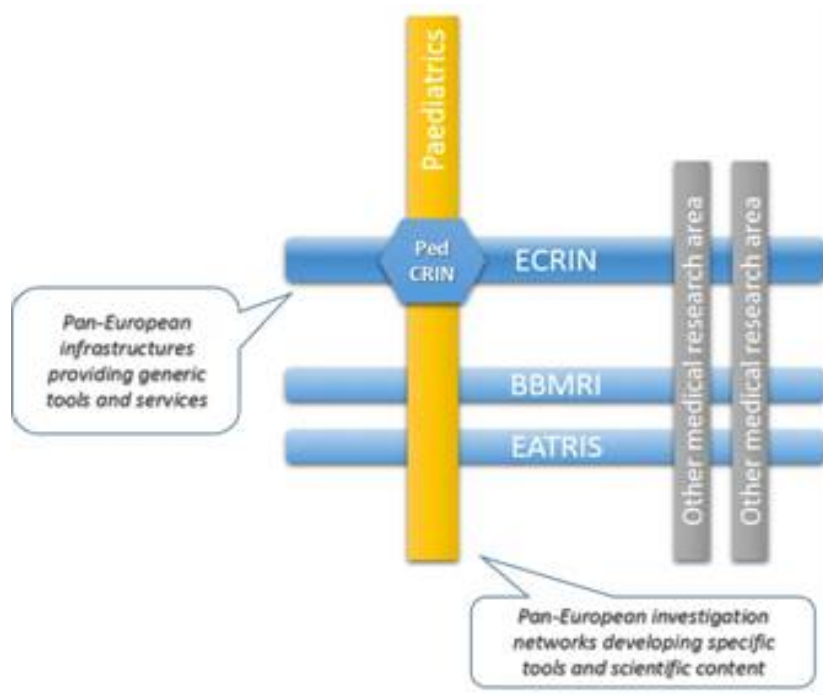
# INFRADEV-3 PedCRIN project

**Define a development strategy for Paediatric trial management capacity**

**Develop tools specific for the management of paediatric trials**

- Ethical aspects
- Outcome measures
- Pharmacovigilance (adverse effects at various age groups)
- Methodology for small sample size
- Biosamples and analyses (small blood volumes)

**Run pilot paediatric trials (call for projects)**



## CORBEL

a pan-European project that integrates research infrastructures for biomedical sciences.

will develop the tools, services and data management required by cutting-edge European research projects

collectively the biomedical Research Infrastructures will establish a sustained foundation of collaborative scientific services for biomedical research in Europe and embed the combined infrastructure capabilities into the scientific workflow of advanced users.

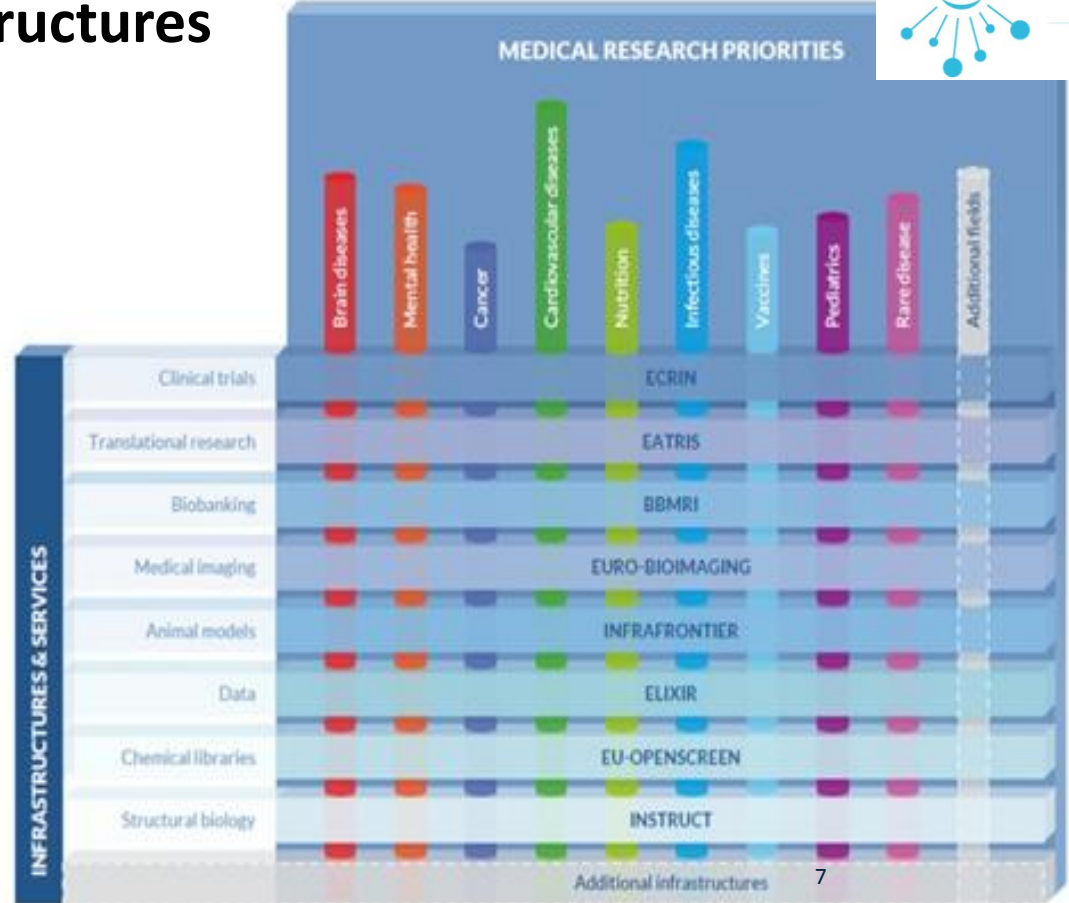
CORBEL has a Medical Infrastructure Users' Forum (MIUF) that Adriana and I are members of.

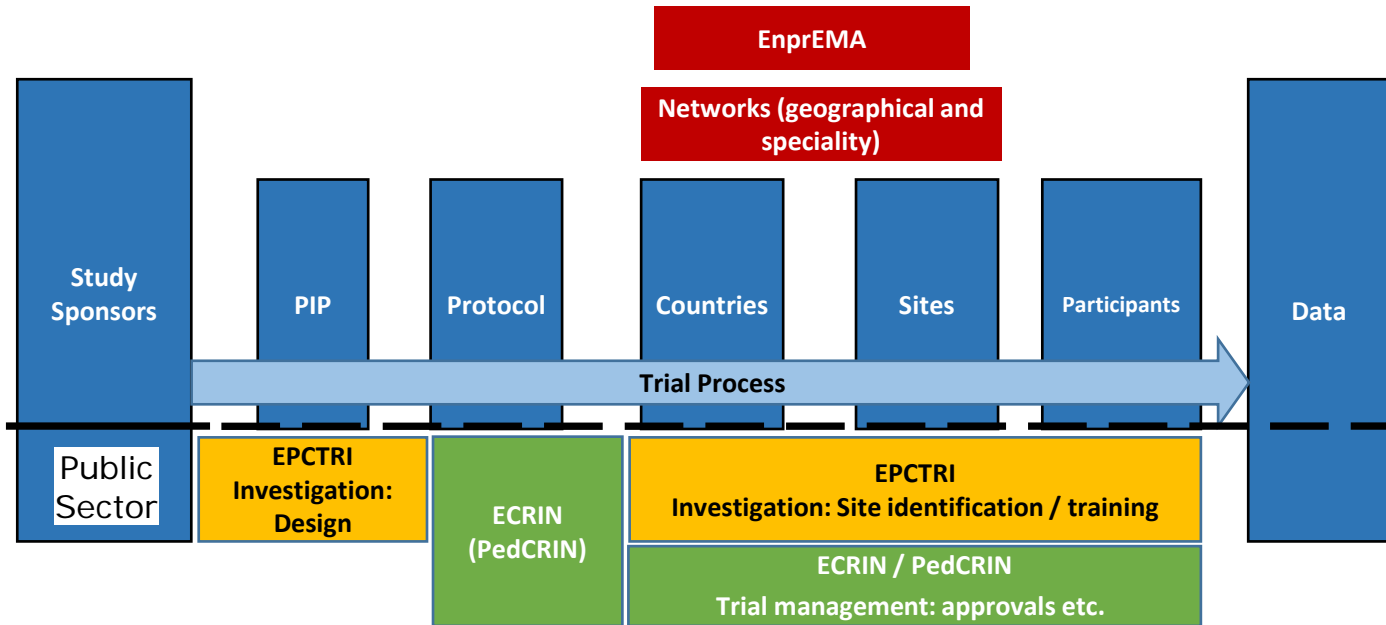
MIUF is looking for input from service users (and potential service users).

# Partnership with medical research communities and medical research infrastructures



- Collaboration agreement with pan-European investigation networks ('users')
- ECRIN-IA : structuring pan-European investigation communities (rare disease, medical device, nutrition)
- Coordinating ESFRI medical RIs & medical communities (Corbel WP3.1)





## Next steps

Need integrated approach building from diverse contributors

Research funding

Health care funding

- o Government

- Local

- National

- o Health Insurance

Industry

## **INFRA-DEV-001 proposal (March 2017)**

Scope out how to bring diverse contributors together for sustainable collaboration

Function

Global principles with local architecture

Legal

Finance

Governance

Ethics

Performance Management

## INFRA-DEV-001 proposal (March 2017)

Scope out how to bring diverse contributors together for sustainable collaboration

All stakeholders

Function

Global principles with local architecture

Children

Legal

Young People

Finance

Families

Governance

Ethics

Performance Management

Industry / IMI2